



PRINCE ALBERT ROAD

LONDON, NW1

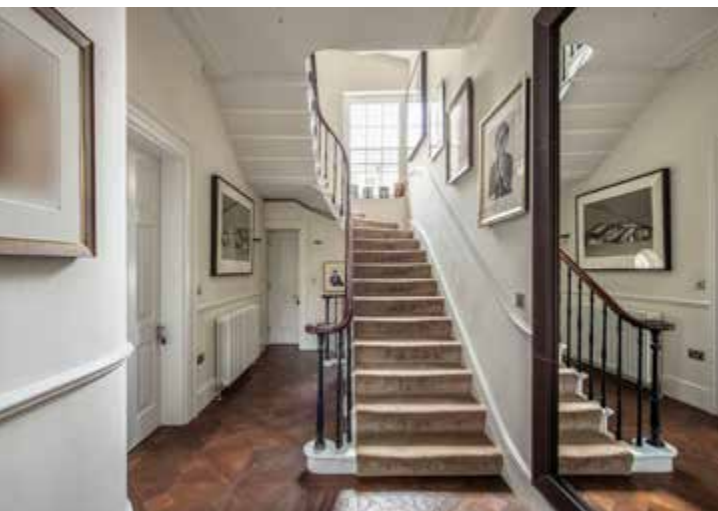


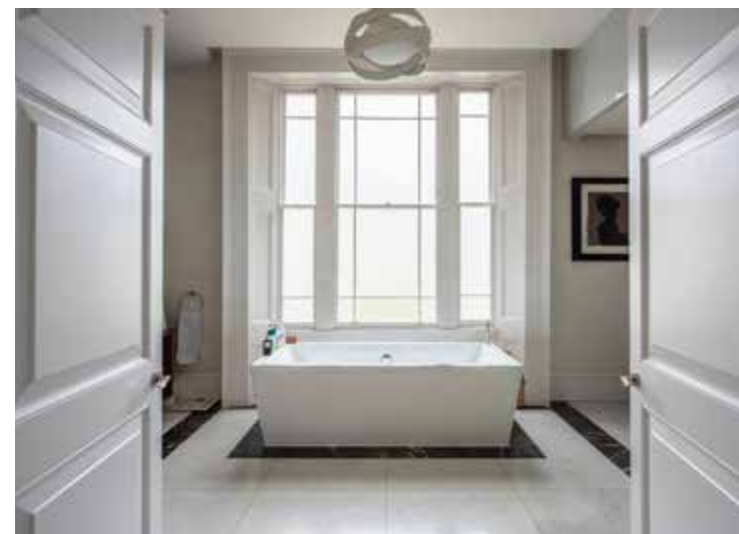
## PRINCE ALBERT ROAD

LONDON, NW1

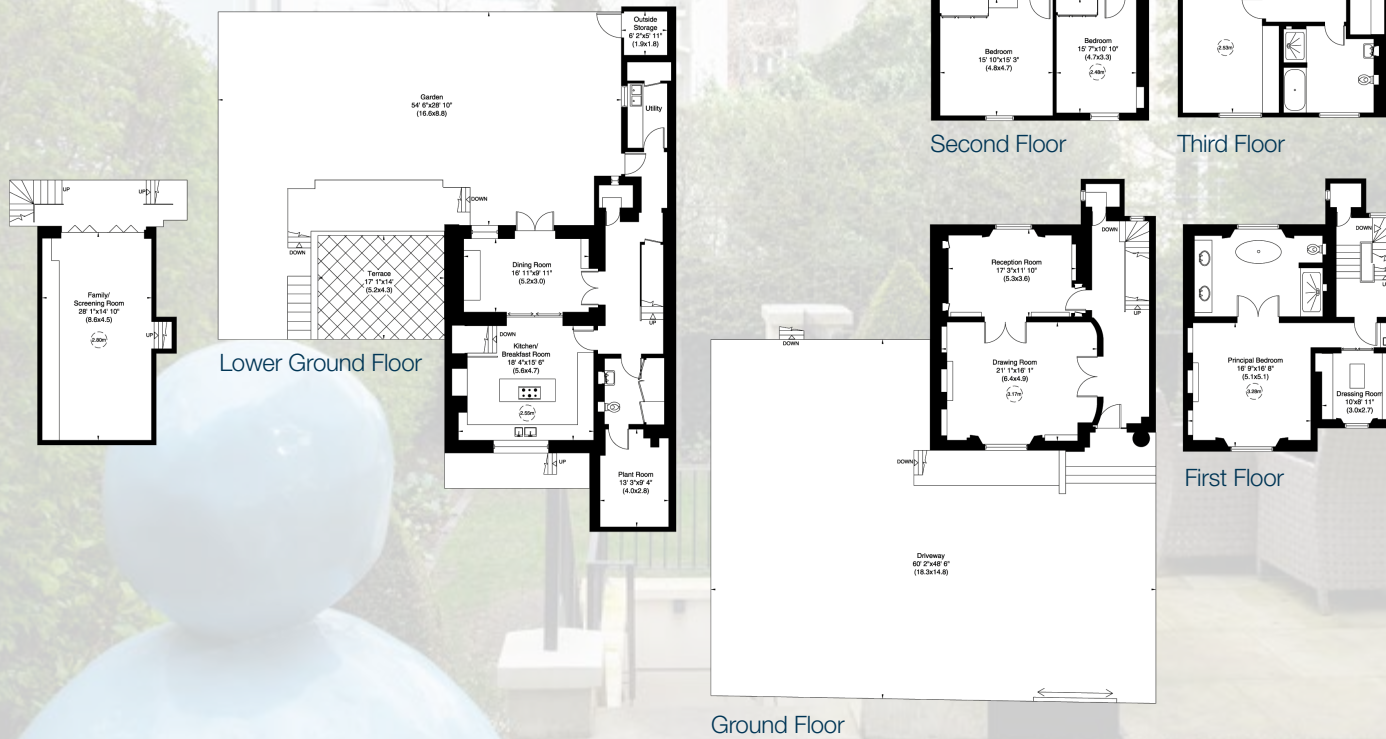
An imposing white stucco-fronted residence located on this coveted position opposite Regent's Park and London Zoo, just moments from the vibrant open spaces of Primrose Hill, this exceptional residence on Prince Albert Road offers a rare opportunity to enjoy elegant, park-side living in one of London's most prestigious locations.

Arranged over multiple levels and extending to approximately 4527 sq ft, (421 sq. mts) the property which has been totally refurbished and extended by the current owner over the last 5 years offers generous proportions and a graceful sense of period charm. From the moment you step inside, the home reveals a sequence of well-balanced living spaces that reflect its architectural heritage, with elegant fireplaces, decorative corning and tall sash windows. The interiors are immaculate and thoughtfully presented, blending timeless character alongside modern architecture with the benefit of having 21st century technology throughout. This beautiful family house benefits from close proximity to stunning green spaces, cultural landmarks, and London's finest dining, shopping, and transport links.





APPROXIMATE GROSS INTERNAL AREA  
 421 SQ\_M (4,527 SQ\_FT) INCLUDING UNDER 1.5M AND OUTSIDE STORAGE  
 417 SQ\_M (4,484 SQ\_FT) EXCLUDING UNDER 1.5M AND OUTSIDE STORAGE



### ACCOMMODATION & AMENITIES

ENTRANCE HALL • DRAWING ROOM • RECEPTION ROOM  
 KITCHEN/BREAKFAST ROOM • FAMILY/GARDEN ROOM  
 DINING ROOM • UTILITY ROOM • GUEST CLOAKROOM  
 PRINCIPAL BEDROOM WITH EN SUITE BATHROOM AND  
 DRESSING ROOM • THREE FURTHER BEDROOM  
 TWO FAMILY BATHROOMS • AMPLE INTERNAL AND EXTERNAL  
 STORAGE • EXTENSIVE TERRACING AND GARDENS THAT  
 WRAP AROUND THE PROPERTY • GATED OFF STREET  
 PARKING FOR 4/5 VEHICLES

**PRICE ON APPLICATION**

**FREEHOLD**

**SOLE SELLING AGENTS**



RESIDENTIAL SALES & ACQUISITIONS

**020 7431 0000**

28 Church Row, Hampstead, London NW3 6UP  
 email: [info@marcusparfitt.com](mailto:info@marcusparfitt.com) [www.marcusparfitt.com](http://www.marcusparfitt.com)

