



St. Pancras Chambers

Euston Road, NW1

£6,500 per month
(£1,500 per week)

SHORT LET -This exceptional one-bedroom apartment is set within the iconic St Pancras Chambers development, occupying a prime position on the fifth floor.

CHESTERTONS



St. Pancras Chambers

Euston Road, NW1

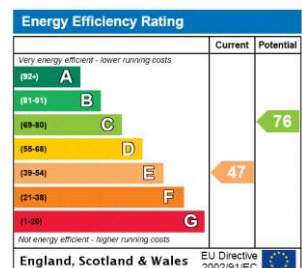
- ALL BILLS INCLUDED
- Parking
- Concierge
- Iconic London Building
- Fantastic Ceiling Height
- Views Of London



SHORT LET - This exceptional one-bedroom apartment is located within the iconic St. Pancras Chambers development, occupying a prime position on the fifth floor. Boasting soaring high ceilings, a generous open-plan living area, and beautifully preserved original features, the property seamlessly combines historic charm with modern convenience.

Residents enjoy the convenience of a porter service and lift access, while the thoughtfully designed layout includes a striking double-height reception room, a dining area with a sleek open-plan kitchen, a spacious bedroom with an en-suite and dressing room, as well as a quest cloakroom. Private parking is also included. INCLUSIVE OF ALL

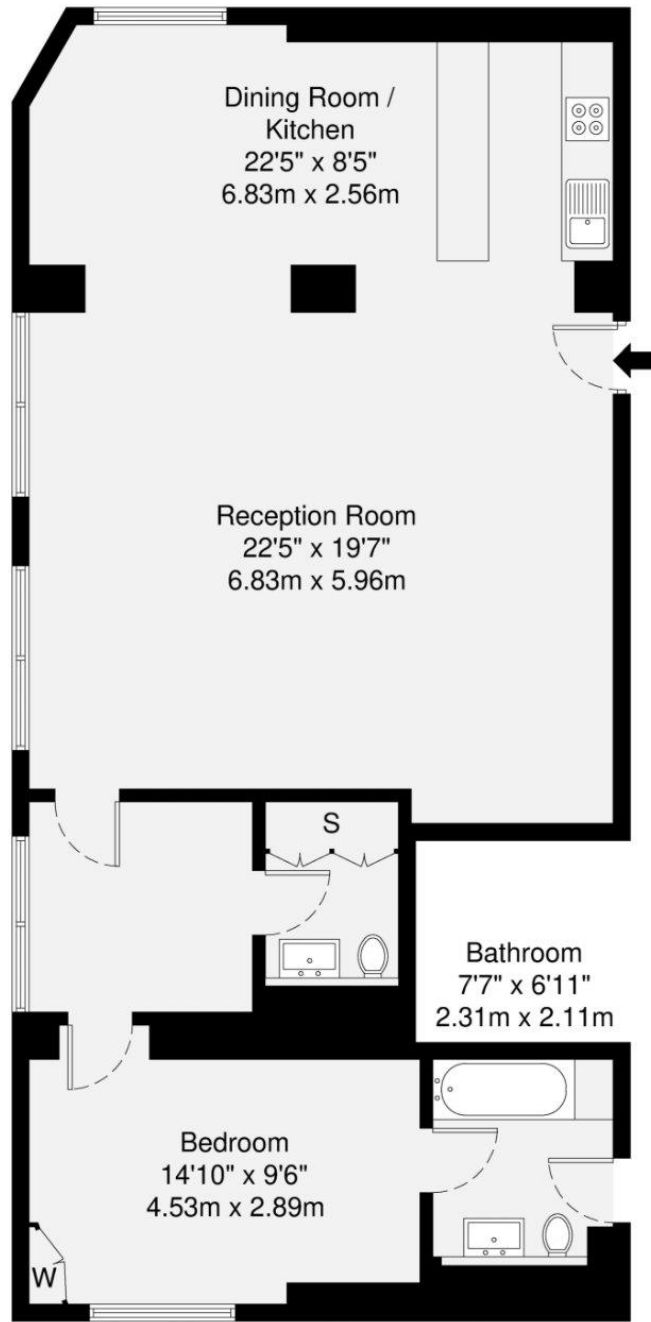
Minimum Term: 1 months
Deposit Required: £7,500.00
Local Authority: Camden
Council Tax Band: F
EPC Rating: E
Furnished, Part Furnished, Unfurnished



Chestertons Camden & Primrose Hill Lettings

99-101 Parkway
 London
 NW1 7PP
 camdentownlettingsusers@chestertons.co.uk
 02072673574
 chestertons.co.uk

Additional tenant charges apply (fees apply to non-AST tenancies only)
 Tenancy Agreement Fee: £300
 References per Tenant/Guarantor: £60
 Inventory check (approx. £100 – £250 inc. VAT)
 chestertons.co.uk/property-to-rent/applicable-fees



Fifth Floor

GROSS INTERNAL AREA (GIA)
The footprint of the property
104.2 sq m / 1121 sq ft

TOTAL STORAGE SPACE
Storage and wardrobe total area
1.0 sq m / 10 sq ft

EXTERNAL FEATURES
Garden, Balcony, Terrace, Verandah etc.
0.0 sq m / 0.0 sq ft

RESTRICTED HEAD HEIGHT
Limited use area under 1.5m
0.0 sq m / 0.0 sq ft

Disclaimer : Floorplan measurements are approximate and are for illustrative purposes only. While we do not doubt the floorplan accuracy and completeness, you or your advisors should conduct a careful, independent investigation of the property in respect of monetary valuation.

Maison
VUE