



1 Sunrise Terrace
Lyndhurst Road | Lowestoft | Suffolk | NR32 4FA

 FINE & COUNTRY

COASTAL SPACE & PRESENCE



Positioned within a popular area of Lowestoft, this impressive end terrace residence offers a rare balance of scale, flexibility and coastal convenience. Approached via a large driveway and occupying a prominent corner plot, it immediately conveys a sense of presence, while internally the generous proportions and natural light create a home that feels both welcoming and effortlessly liveable. Just moments from the beach, park and town centre, everyday life here is shaped by sea air, open skies and a relaxed coastal rhythm.



KEY FEATURES

- A Substantial End Terrace Residence arranged over Three Floors
- Four Bedrooms including Two En-Suite Bedrooms
- Further Bathroom and a Cloakroom'
- Bay Fronted Sitting Room with Dual Aspect Windows
- Kitchen/Dining Room with Breakfast Bar
- Utility Room and Study
- High Ceilings and Excellent Natural Light
- Large Driveway for Off Road Parking
- Convenient Location Close to the Beach, Park and Town Centre
- The Accommodation extends to 1,960 sq.ft
- Energy Rating: C

High ceilings and well-positioned windows define the overall feel of the home, creating a bright and airy atmosphere that carries throughout each floor. From the moment you step inside, there is a clear sense of openness, with natural light moving effortlessly from room to room and enhancing the generous proportions that set the property apart.

Light Filled Living

The layout has been carefully considered to provide both flow and separation, allowing for connected living spaces while still offering areas of privacy when needed. The sitting room is particularly impressive, with its bay fronted design and dual aspect drawing in light throughout the day. This is a space that feels both elegant and comfortable, equally suited to quiet evenings or entertaining guests. The sense of scale here is immediately apparent, creating a room that feels both welcoming and refined.

Contemporary Kitchen

The kitchen and dining room form the central hub of the home, designed to balance everyday practicality with a clean, contemporary aesthetic. Finished with modern cabinetry and generous work surfaces, the space is both highly functional and visually appealing. A central breakfast bar provides a natural focal point, ideal for informal dining, morning coffee or social gatherings, while still allowing ample room for a full dining area.

The layout encourages interaction, making it a space that works equally well for family life and entertaining. Whether hosting guests or enjoying everyday meals, the room offers both flexibility and comfort. The adjoining utility room enhances the overall practicality, providing additional storage and keeping the main kitchen area streamlined and uncluttered.





KEY FEATURES

Flexible Bedrooms

The bedroom accommodation is arranged across the upper floors, each room offering generous proportions and excellent natural light. The sense of space continues throughout, with high ceilings and well-placed windows creating calm and inviting environments within each bedroom. The principal bedroom suite provides a particularly impressive retreat, offering both scale and privacy. With ample space for furnishings and the benefit of an en-suite, it creates a comfortable and well-balanced setting that feels distinctly separate from the rest of the home. Further bedrooms are equally versatile, easily suited to family living, guest accommodation or alternative uses such as dressing rooms or creative spaces.

The inclusion of a dedicated study further supports modern lifestyles, providing a quiet and practical area for home working or additional flexibility depending on individual needs.

Designed For Living

The overall layout has been thoughtfully configured to suit a variety of living arrangements, making the home as adaptable as it is spacious. Arranged across three floors, the property offers a natural balance between open, sociable areas and more private spaces, allowing it to function effortlessly for both everyday living and more formal occasions. Multiple bath and shower rooms are positioned across different levels, ensuring convenience for both family members and guests. This careful planning enhances the usability of the home, allowing each floor to operate independently if required. The result is a property that feels cohesive, practical and well suited to the demands of modern life, while still retaining a strong sense of character and presence.

















INFORMATION



What Three Words Location

Every 3 metre square of the world has been given a unique combination of three words. Download the app to pinpoint the exact location of this property using the words...[festivity.advice.desk](#)

Services, District Council and Tenure

Gas Central Heating, Mains Water, Mains Drainage

Ultra Fast Broadband Available - please see www.openreach.com/fibre-checker

Mobile Phone Reception - varies depending on network provider - please see www.checker.ofcom.org.uk

East Suffolk Council - Council Tax Band C

Freehold

On The Doorstep

The property is situated within the highly regarded Gunton area, one of North Lowestoft's most desirable residential locations. Known for its close proximity to the coastline, this setting offers a lifestyle that blends everyday convenience with the natural appeal of coastal living. North Denes Beach and Gunton Cliffs are both just a short distance away, providing expansive sands, open skies and far-reaching views across the North Sea. This stretch of coastline is particularly appealing for its sense of space and tranquility, offering the perfect environment for morning walks, time spent by the water or simply enjoying the ever-changing coastal landscape. The area retains a relaxed residential feel while still benefiting from a range of local amenities, including shops, cafés and essential services. Schooling options are available nearby, and transport links provide access to surrounding towns and cities, ensuring the location is as practical as it is desirable.

How Far Is It To?

Great Yarmouth lies approximately 8 miles to the north and offers a wide range of shopping, leisure and entertainment facilities, including its historic seafront and marina. Lowestoft town centre is located around 1.5 miles away, providing supermarkets, independent retailers, restaurants and rail connections, with services running towards Norwich and further afield. Oulton Broad, approximately 3 miles from the property, is well known for its waterside setting and access to the Norfolk Broads. Here, you will find a selection of restaurants, cafés and leisure activities centered around the water, making it a popular destination throughout the year. Beccles, around 10 miles away, is a thriving market town offering a strong sense of community, independent shops, eateries and riverside walks. Norwich, located approximately 24 miles to the west, provides a comprehensive selection of retail, cultural and dining experiences, along with a mainline rail service to London Liverpool Street and an international airport. The wider Suffolk coastline is also within easy reach, with destinations such as Southwold offering a quintessential seaside experience, complete with beach huts, a pier and historic charm.

Directions - Please Scan QR Code Below

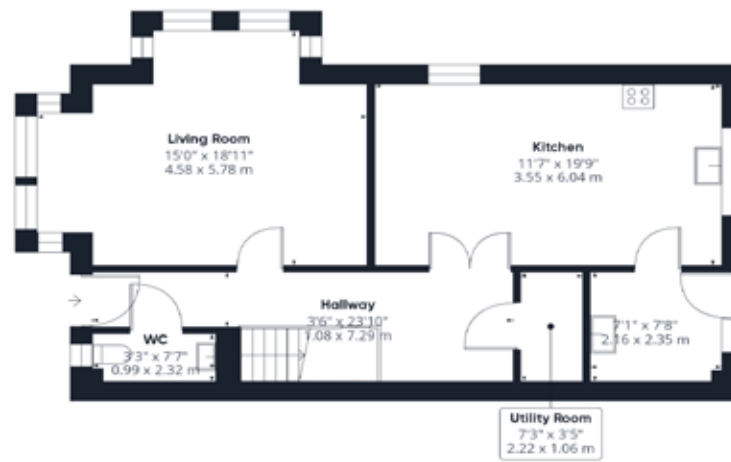
From Beccles, proceed along the A146 towards Lowestoft. When you reach Carlton Colville take the Beccles Road through to Oulton Broad. When you reach the roundabout at Normanston Drive take the 2nd exit and continue along Normanston Drive. Take the third exit at the next roundabout and continue along Normanston Drive. At the next roundabout take the 2nd exit onto St Peter's Street and continue until you reach a left hand turn on to Jubilee Way and continue until you reach Corton Road on the right hand side, take this turning and the property will be found on the right hand side at the beginning of Lyndhurst Road.

Norfolk Country Properties. Registered in England and Wales No. 06777456. Registered Office - Blyth House, Rendham Road, Saxmundham, IP17 1WA

Copyright © Fine & Country Ltd.

Please Note: All images and floorplans shown in the brochure and online remain copyright to the individual photographer and may not be used for any purposes whatsoever without prior permission.





Floor 0



Floor 1



Floor 2

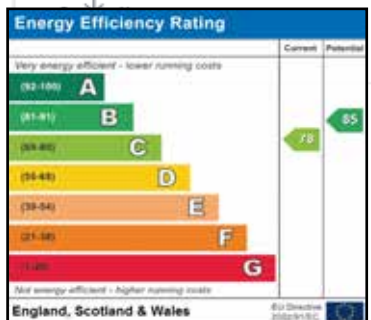
Approximate total area⁽¹⁾
 1960 ft²
 182.1 m²
 Reduced headroom
 72 ft²
 6.7 m²

(1) Excluding balconies and terraces

Reduced headroom
 Below 5 ft/1.5 m

Calculations reference the RICS IPMS 3C standard. Measurements are approximate and not to scale. This floor plan is intended for illustration only.

GIRAFFE360



Agents notes: All measurements are approximate and for general guidance only and whilst every attempt has been made to ensure accuracy, they must not be relied on. The fixtures, fittings and appliances referred to have not been tested and therefore no guarantee can be given that they are in working order. Internal photographs are reproduced for general information and it must not be inferred that any item shown is included with the property. For a free valuation, contact the numbers listed on the brochure.





FINE & COUNTRY

Fine & Country is a global network of estate agencies specialising in the marketing, sale and rental of luxury residential property. With offices in the UK, Australia, Egypt, France, Hungary, Italy, Malta, Namibia, Portugal, South Africa, Spain, The Channel Islands, UAE, USA and West Africa we combine the widespread exposure of the international marketplace with the local expertise and knowledge of carefully selected independent property professionals.

Fine & Country appreciates the most exclusive properties require a more compelling, sophisticated and intelligent presentation - leading to a common, yet uniquely exercised and successful strategy emphasising the lifestyle qualities of the property.

This unique approach to luxury homes marketing delivers high quality, intelligent and creative concepts for property promotion combined with the latest technology and marketing techniques.

We understand moving home is one of the most important decisions you make; your home is both a financial and emotional investment. With Fine & Country you benefit from the local knowledge, experience, expertise and contacts of a well trained, educated and courteous team of professionals, working to make the sale or purchase of your property as stress free as possible.

THE FINE & COUNTRY
FOUNDATION

Fine & Country Foundation, charity no. 1160989

Striving to relieve homelessness.

To find out more please visit fineandcountry.com/uk/foundation



follow Fine & Country Beccles on



Fine & Country Waveney
14 Blyburgate, Beccles, Suffolk, NR34 9TB
01502 533383 | beccles@fineandcountry.com

Scan the QR Code to find this property on the
Fine & Country website.

