



## 10 Crista Place, Carterton

Guide Price £94,000



## 10 Crista Place

This modern detached Coach House offers bright, well-proportioned living in a peaceful setting and is available to purchase as a 40% shared ownership property.

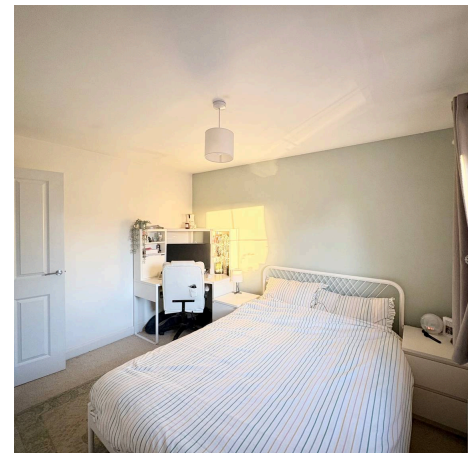
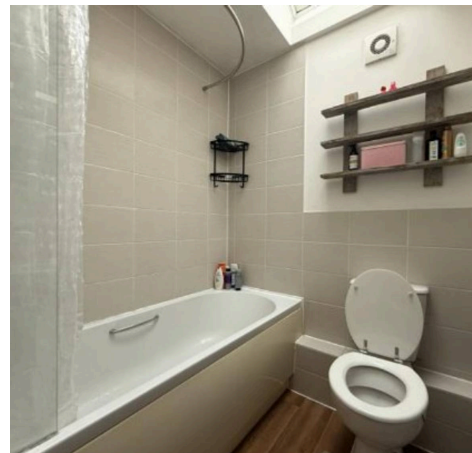
Council Tax band: B

Tenure: Leasehold

EPC Energy Efficiency Rating: C

EPC Environmental Impact Rating: C

- Professional photographs and floorplan to follow.
- Offered to market at a 40% share.
- A great opportunity to purchase this two-bedroom detached coach house located on the popular Shilton Park development.
- Private garden with modern decked area.
- Connected Garage and private dedicated parking space.
- Short walk to the town centre and excellent public transport to the Centre and surrounding towns.
- French doors and skylights provide natural lighting throughout.

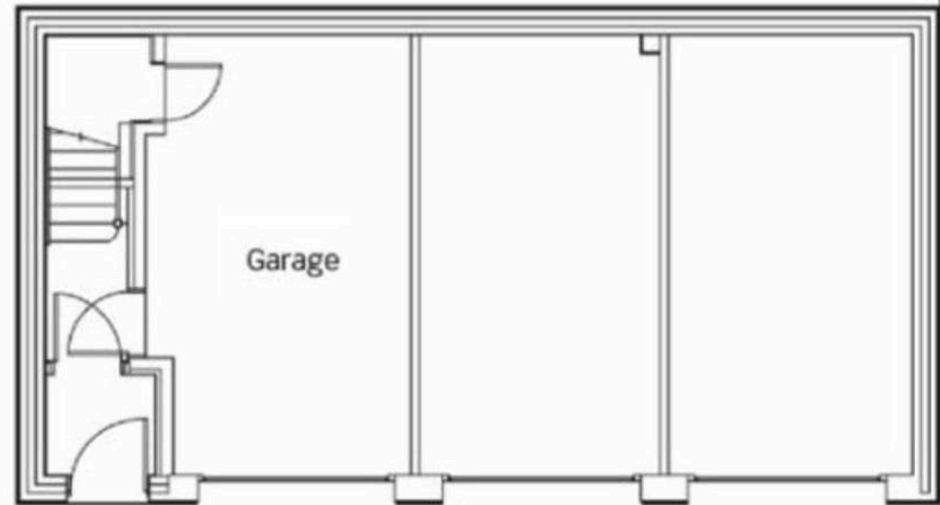


### First floor

Kitchen	3791mm x 1948mm
Living/Dining	4813mm x 6065mm*
Bedroom 1	3174mm x 3454mm*
Bedroom 2	3223mm x 3687mm*



### Ground floor



\* Maximum dimensions

## Floor Plan



## Simpsons Witney Branch

4 Langdale Court Witney, Oxfordshire - OX28 6AD

01993 835030 • [witney@simpsonsproperty.com](mailto:witney@simpsonsproperty.com) • [www.simpsonsproperty.com/](http://www.simpsonsproperty.com/)