



## Nelson Ward Drive

Radstock, BA3 3FS

£410,000

The ideal family home. The space, the standard of finish, convenience and located on the edge of the estate with a leafy outlook.

- Immaculately presented
- Easy cycle track access
- Social living space
- Edge of estate
- South-West facing garden
- Driveway parking

### Viewing

Please contact our Bath Stone Property (MSN) Office on 01761 360144

if you wish to arrange a viewing appointment for this property or require further information.



4



2

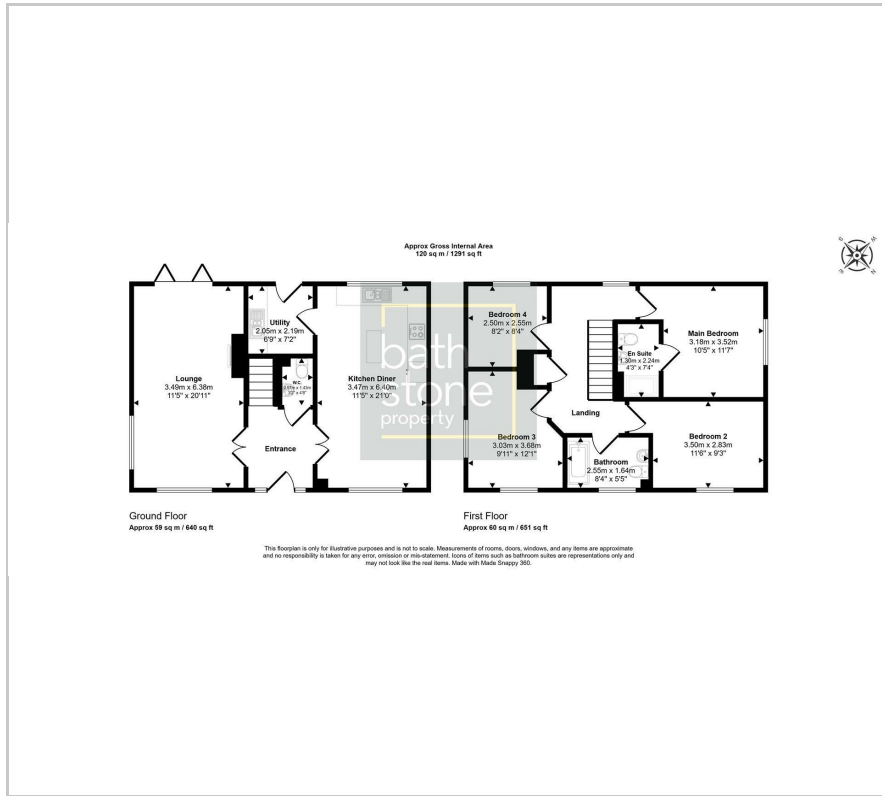


2

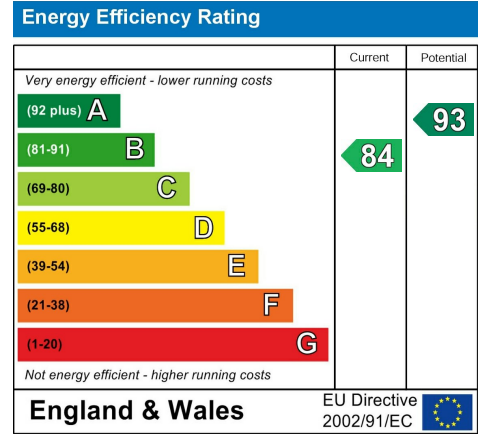


B

# Floor Plan



# Energy Efficiency Graph



Please give us Feedback



These particulars, whilst believed to be accurate are set out as a general outline only for guidance and do not constitute any part of an offer or contract. Intending purchasers should not rely on them as statements of representation of fact, but must satisfy themselves by inspection or otherwise as to their accuracy. No person in this firms employment has the authority to make or give any representation or warranty in respect of the property.