

# LANES



## 20 Longville, Old Wolverton, Milton Keynes, Buckinghamshire, MK12 5PF

Lanes are delighted to offer to let this well-presented three-bedroom semi-detached home, situated in the sought-after village of Old Wolverton, just a stone's throw from the historic market town of Stony Stratford in north Milton Keynes.

The property is ideally located within walking distance of Wolverton railway station and offers excellent access to the A5, local amenities, highly regarded schools, and the beautiful Ouse Valley Park.

The accommodation briefly comprises an entrance hall, a fitted kitchen with white goods, a dining room, a spacious living room, two double bedrooms, a further single bedroom, and a family bathroom.

Externally, the property benefits from front and rear gardens, a driveway providing off-road parking, and a single garage.

Available Beginning of September. Council Tax Band C.

- Three Bedrooms
- Driveway
- Good Condition Throughout
- Located in Old Wolverton
- Semi Detached House
- Front and Rear Gardens
- Available Beginning of September
- White Goods
- Single Garage
- Professionals Only

## £1,550 Per Month



27 Shirwell Crescent, Furzton Lake, Milton Keynes, Buckinghamshire, MK4 1GA  
Tel: 01908236236 | [info@lanesmk.co.uk](mailto:info@lanesmk.co.uk) | [www.lanesmk.co.uk](http://www.lanesmk.co.uk)



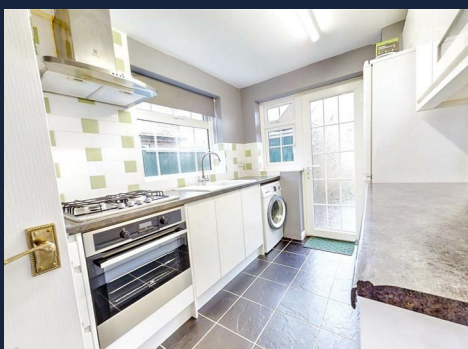
# 20 Longville, Old Wolverton, Milton Keynes, Buckinghamshire, MK12

PDF

## Marketing information

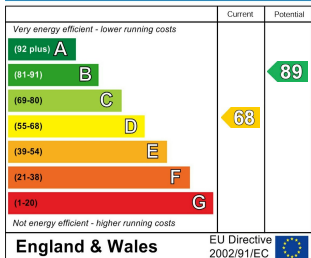
Lanes Sales and Lettings are a member of The Property Ombudsman Redress Scheme. Contact 01722 333306

Tenants deposit are registered with the Tenants Deposit Scheme. Contact 0300 037 1000





**Energy Efficiency Rating**



**Environmental Impact (CO<sub>2</sub>) Rating**

