



Albert Embankment, SE1

£7,999 Per calendar month

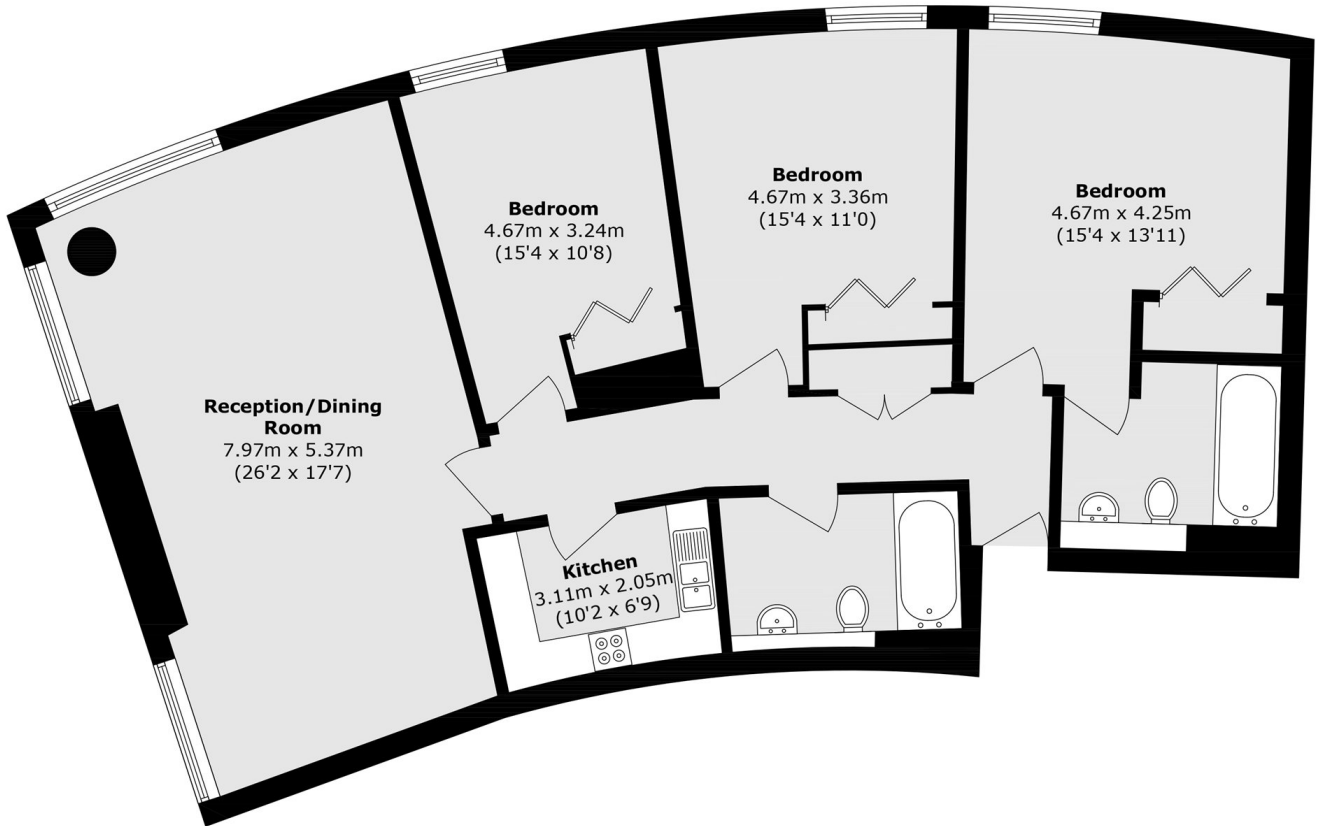
A well-proportioned three-bedroom apartment in Parliament View Apartments with excellent lateral living space and outstanding views of the Palace of Westminster and the River Thames. The apartment offers bright open-plan living and entertaining areas with floor-to-ceiling windows.

The development offers 24-hour concierge and a resident's gym. Ideally located for quick access to Westminster and Waterloo, with excellent transport links, restaurants and local amenities close by.

Features

- Three Bedroom Apartment
- Bright Reception Room
- Iconic Views
- 24-Hour Concierge
- Resident's Gym

Albert Embankment, London, SE1



Total area (approx.): 117.0 sq. m (1,259.3 sq. ft)