



## The Downs, SW20

£425,000

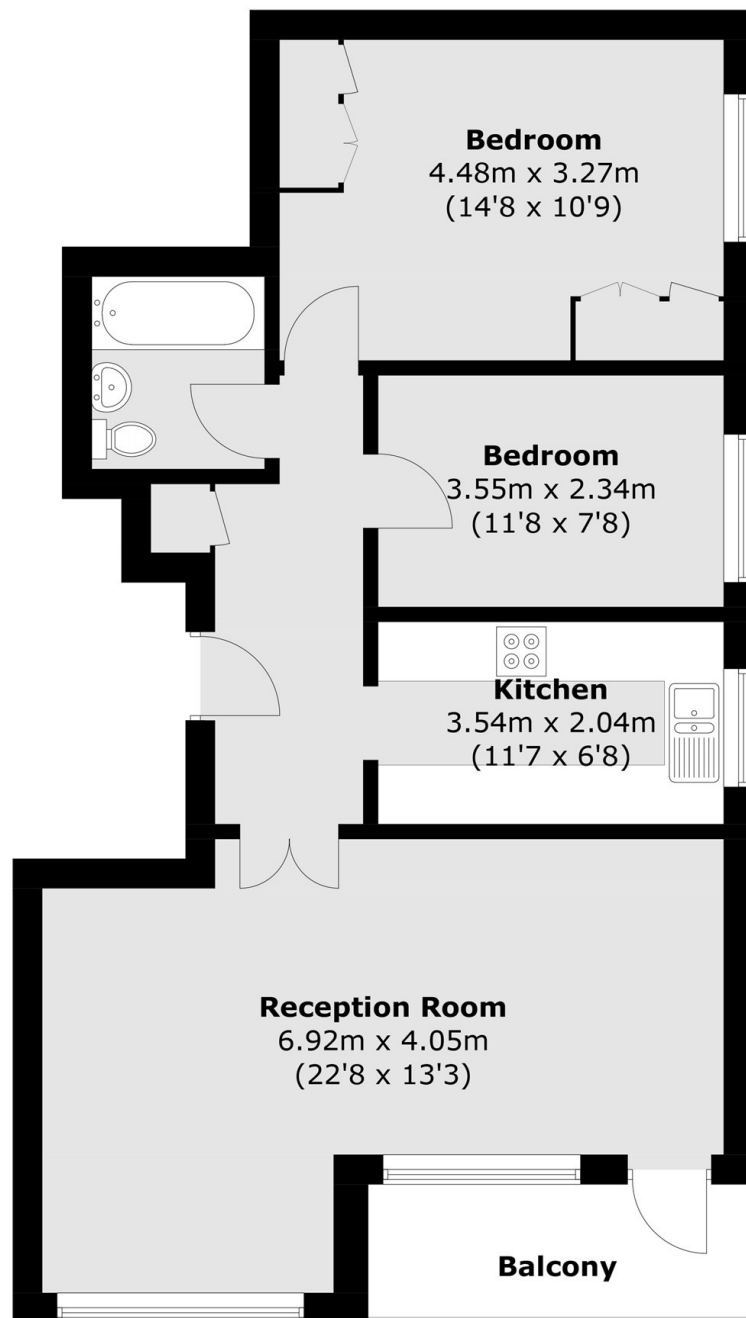
This two double bedroom, second floor property has been completely refurbished, offering a large living/dining room with a balcony, modern kitchen and bathroom, with a garage in block.

Located on The Downs, a highly regarded location in Wimbledon, you are close to Wimbledon Town Centre with the district line and overground station, wide range of shopping facilities, restaurants and bars.

### Features

- Garage In Block
- Two Double Bedrooms
- Large Balcony
- Communal Gardens
- New Bathroom
- No Onward Chain

# The Downs, London, SW20



Total area (approx.): 68.7 sq. m (739.5 sq. ft)  
Balcony: 5.2 sq. m (56.0 sq. ft)