

Tower Bridge Road, SE1

£3,400 Per calendar month

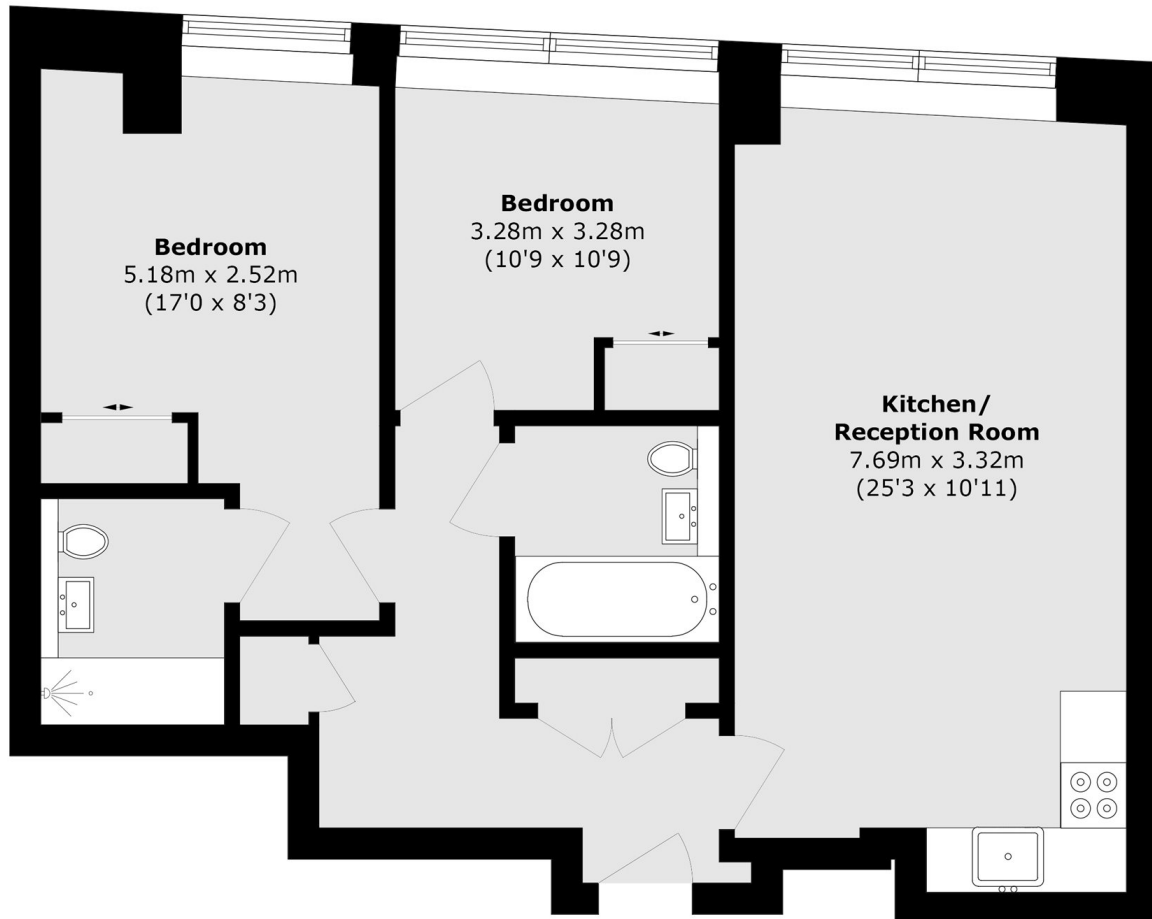
A beautifully decorated two double bedroom flat in a new build development on Tower Bridge Road. The development includes a concierge and is only moments away from London Bridge station. Wooden floors throughout and an open plan living space, this property would make an ideal home for a professional couple or sharers.

Tower Bridge Road is half a mile from London Bridge. The shops of Bermondsey Street are close by as are the riverside restaurants in Shad Thames. The world famous Borough Market is less than a mile away.

Features

- Two Double Bedrooms
- Two Bathroom
- Open Plan Living
- 24 Hour Concierge
- New Development
- Furnished

Tower Bridge Road, London, SE1



Total area (approx.): 75.7 sq. m (814.8 sq. ft)