





Property Description

GUIDE PRICE £390,000 - 425,000. Lovely maintained and well-loved family home comes to market after 26 years! This beautiful 3 bed semi-detached home in the heart of Edenbridge has been a cherished family residence for 26 years. Set on a generous plot, the property offers spacious living areas, a well-appointed kitchen and three comfortable bedrooms- ideal for growing families.

Outside, a mature garden provides a peaceful retreat, perfect for relaxing or entertaining with plenty of space for children to play or entertain. Located in a friendly neighbourhood close to local schools, shops and transport links, this home combines comfort, convenience and a true sense of belonging. A rare opportunity to make lasting memories in a home that's been filled with them.

Front Garden

Mature front garden leading to front door.

Entrance Porch

With stairs leading to the first floor. Radiator and power points.

Lounge

19' 8" x 13' 6" (5.99m x 4.11m)

With windows to the front TV point, telephone point and opening to the Dining Room.

Dining Room

9' 6" x 13' 6" (2.90m x 4.11m)

With patio doors to the rear and opening to the lounge and kitchen. Radiators and power points.

Kitchen

7' x 11' 8" (2.13m x 3.56m)

With window and door to the rear. Range of wall and base units with work tops over incorporating stainless steel sink and drainer. With space opening onto the lounge and hallway access.

Landing

With doors leading to all rooms and loft access.

Bedroom 1

13' 2" x 13' 3" (4.01m x 4.04m)

With windows to the front and built-in wardrobe. Radiator, power points and fitted carpet.

Bedroom 2

9' 8" x 11' 7" (2.95m x 3.53m)

Newly decorated with windows to the rear with views of woodlands. Built-in wardrobe, radiator, power points and fitted carpet.

Bedroom 3

8' 5" x 9' 7" (2.57m x 2.92m)

With windows to the front. Radiator, power points and fitted carpet.

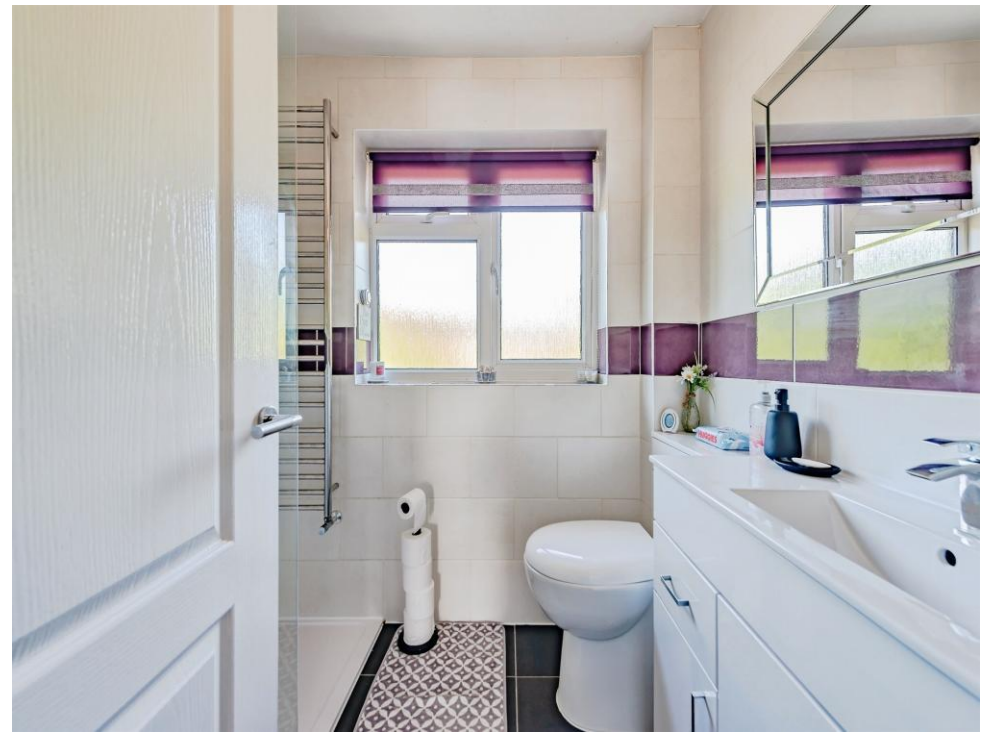
Bathroom

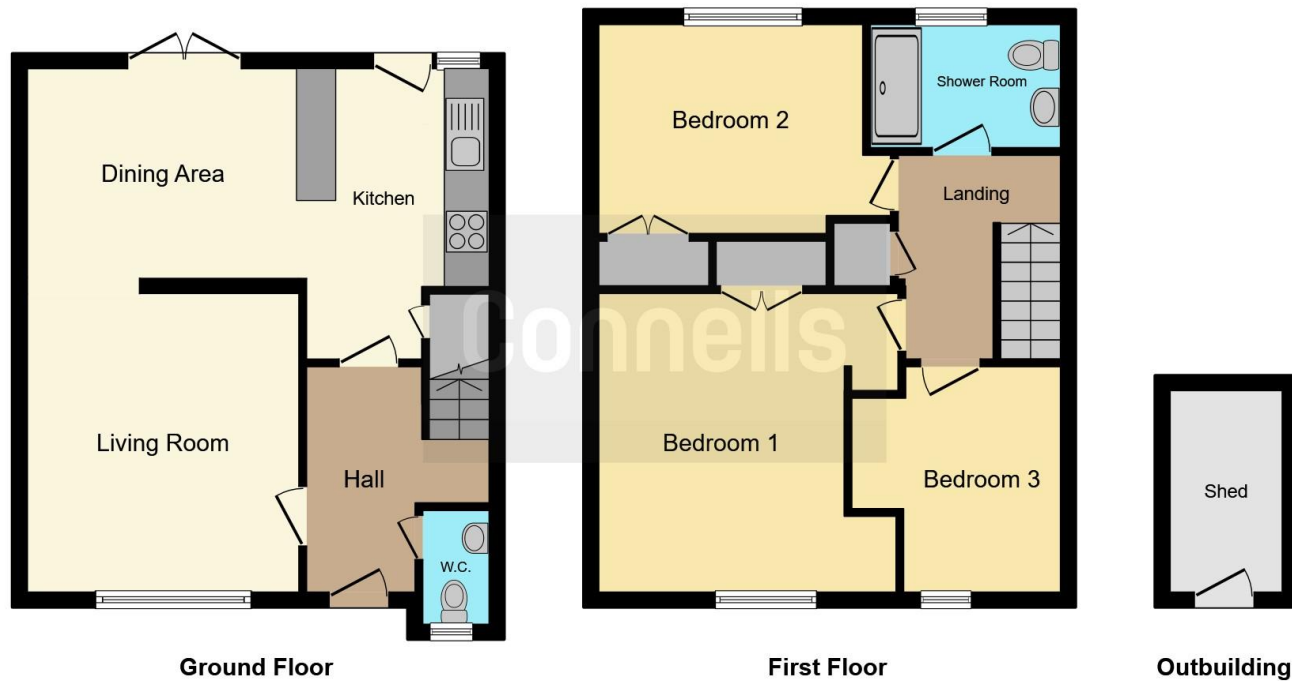
Stylish bathroom with window to the rear. Suite comprising low-level WC, wash hand basin and walk-in shower.

Rear Garden

Generous rear garden enclosed by new fencing and views of woodlands to the rear. Storage shed.







This floor plan is for illustrative purposes only. It is not drawn to scale. Any measurements, floor areas (including any total floor area), openings and orientation are approximate. No details are guaranteed, they cannot be relied upon for any purpose and they do not form part of any agreement. No liability is taken for any error, omission or misstatement. A party must rely upon its own inspection(s). Powered by www.focalagent.com

To view this property please contact Connells on

T 01342 325 911
E eastgrinstead@connells.co.uk

90 London Road
 EAST GRINSTEAD RH19 1EP

EPC Rating: C Council Tax
 Band: D

Tenure: Freehold

view this property online connells.co.uk/Property/EGR404923



1. MONEY LAUNDERING REGULATIONS Intending purchasers will be asked to produce identification documentation at a later stage and we would ask for your co-operation in order that there will be no delay in agreeing the sale. 2. These particulars do not constitute part or all of an offer or contract. 3. The measurements indicated are supplied for guidance only and as such must be considered incorrect. Potential buyers are advised to recheck measurements before committing to any expense. 4. We have not tested any apparatus, equipment, fixtures, fittings or services and it is in the buyers interest to check the working condition of any appliances.

Connells Residential is registered in England and Wales under company number 1489613, Registered Office is Cumbria House, 16-20 Hockliffe Street, Leighton Buzzard, Bedfordshire, LU7 1GN. VAT Registration Number is 500 2481 05.

See all our properties at www.connells.co.uk | www.rightmove.co.uk | www.zoopla.co.uk

Property Ref: EGR404923 - 0008