



Portnall Road, W9

£700,000

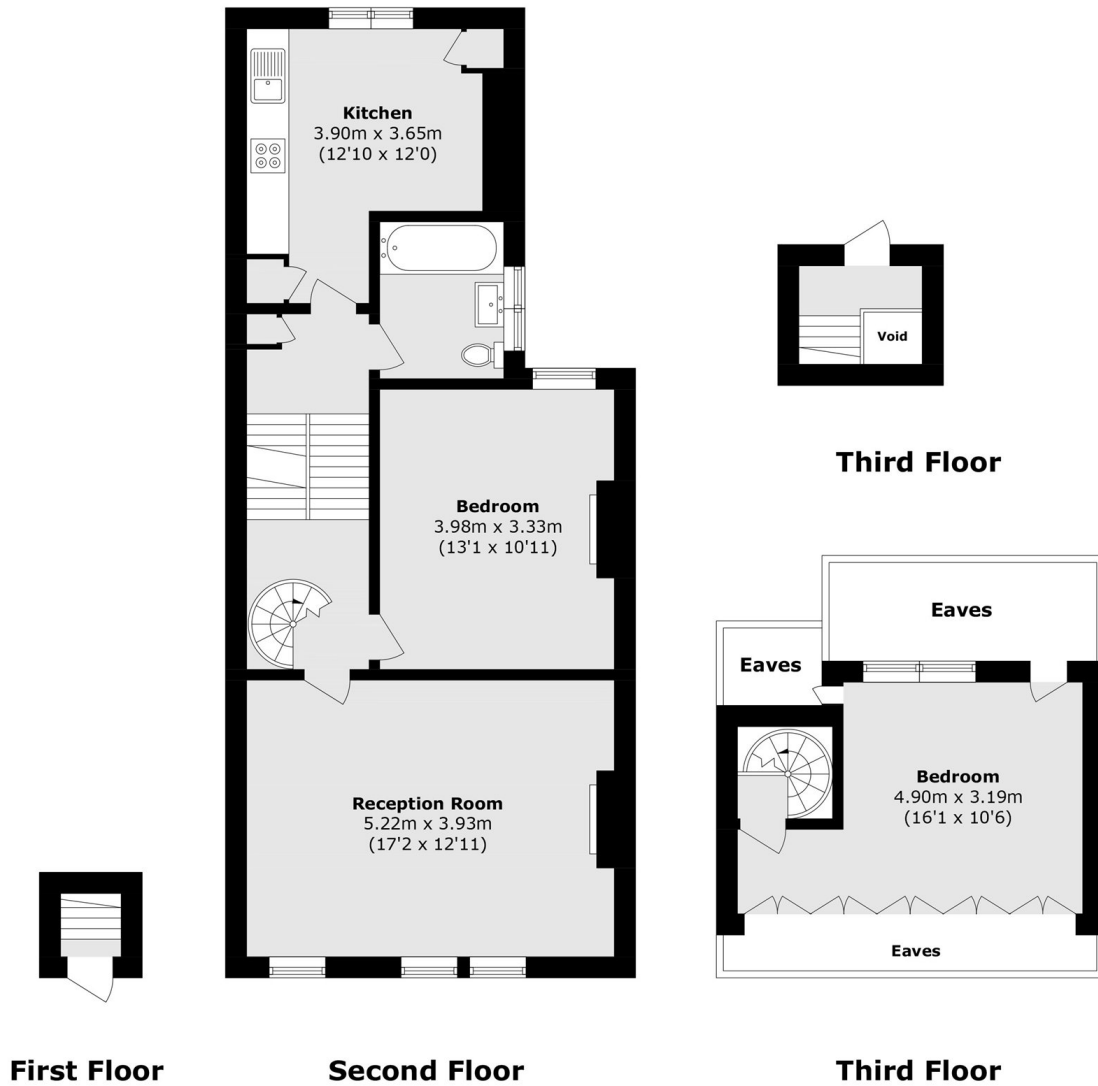
A spacious top floor flat arranged over two floors set in a Victorian conversion. This property features two spacious bedrooms, a bright reception room and a modern separate kitchen.

Portnall Road is ideally situated near the charming cafés and shops of Salusbury Road, with easy access to Queens Park, Westbourne Park, and Maida Vale underground stations, providing convenient links to Central London.

Features

- Spiral Staircase
- Victorian Conversion
- Separate Kitchen
- Great Transport Links
- Chain Free
- Long Lease Length

Portnall Road, Maida Vale, W9



Total area (approx.): 78.1 sq. m (840.6 sq. ft)
(Excluding Eaves and Void)