

RESIDE
BOLTON

Sixteen20 Danner Lane
Horwich, Bolton, BL6 5PZ

Asking Price £550,000



Sixteen20 Danner Lane

Horwich, Bolton, BL6 5PZ

At 1,620 square feet, this stunning four-bedroom home is designed for modern family living. The symmetrical frontage adds a timeless charm, while thoughtful features like a separate downstairs toilet and utility room – ideal as a boot room for post-countryside walks – add practicality. With two lounges, one offers the perfect space for a playroom or home office, giving you flexibility to suit your lifestyle.

Cynefin, Horwich

Situated in the heart of Horwich, Cynefin offers an exceptional collection of new build homes surrounded by the stunning scenery of the West Pennine Moors. Combining the charm of countryside living with the convenience of nearby towns and cities, Cynefin is perfectly placed for those seeking a balanced lifestyle.

Each of our thoughtfully designed homes features flexible living spaces and generous gardens, ideal for modern family life, entertaining, or simply unwinding. Discover the perfect blend of comfort, style, and location at Cynefin – a place you'll be proud to call home.

Internal

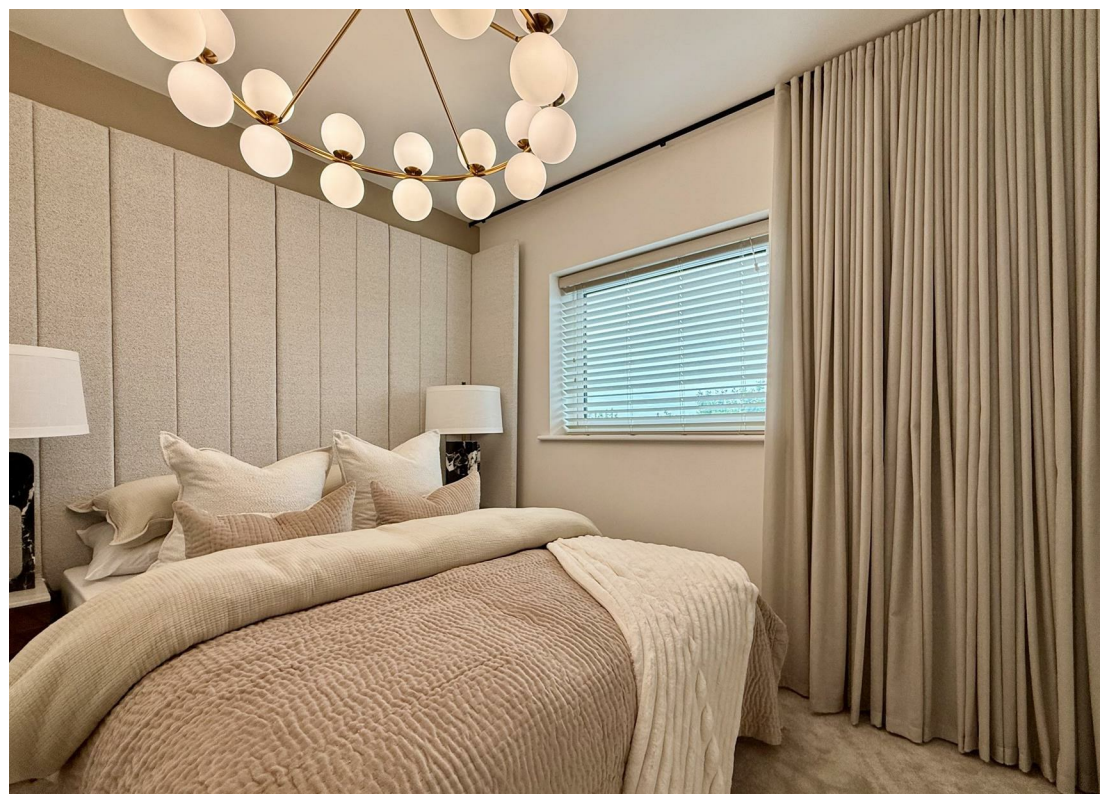
The master bedroom boasts a luxurious walk-in wardrobe, complementing three additional well-sized bedrooms. Natural light flows throughout the home, and its functional yet stylish layout provides the perfect setting for family life or entertaining friends. A home crafted for comfort, convenience, and style.

- Symmetrical front design
- Separate downstairs toilet and utility room/boot room
- Two lounges, with flexibility for a playroom or office
- Master bedroom with walk-in wardrobe





- Exclusive private rooftop garden – with stunning views
- Contemporary open-plan living spaces
- Expansive floor-to-ceiling windows
- Impressive high ceilings enhancing space
- State-of-the-art kitchen with premium finishes
- Fully integrated kitchen appliances
- Cutting-edge smart home technology throughout
- Dedicated EV charging point
- Spacious top-floor bedrooms with a Jack and Jill bathroom
- EPC TBC



Floor Plan

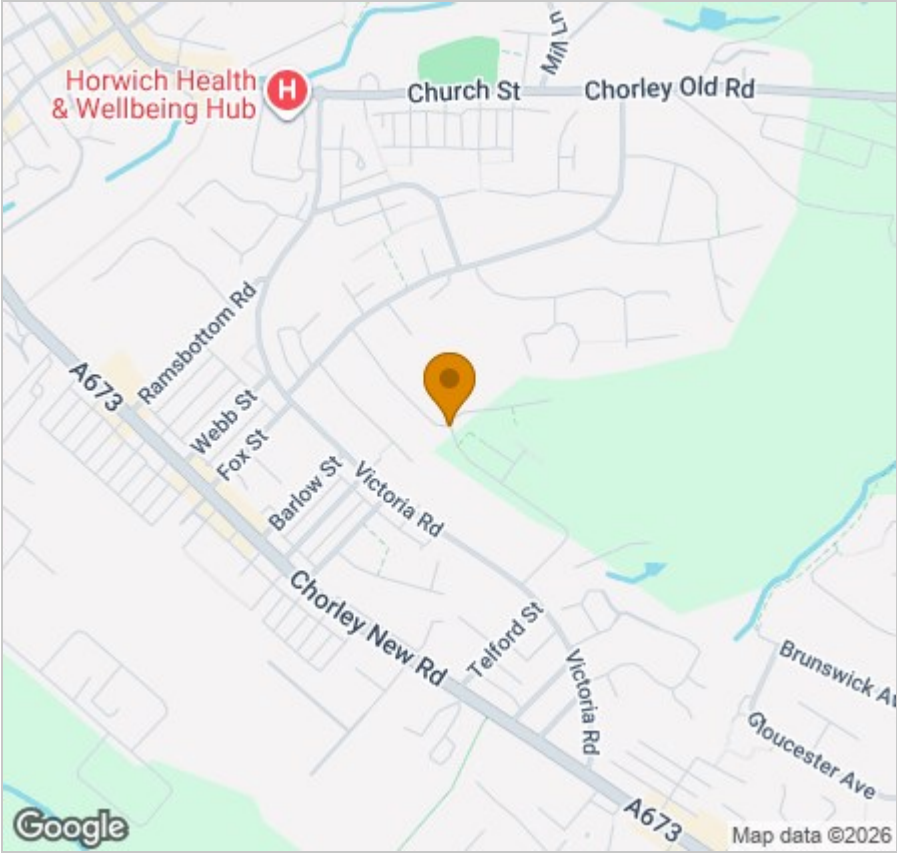


Viewing

Please contact our Reside Bolton Office on 0161 808 0408 if you wish to arrange a viewing appointment for this property or require further information.

These particulars, whilst believed to be accurate are set out as a general outline only for guidance and do not constitute any part of an offer or contract. Intending purchasers should not rely on them as statements of representation of fact, but must satisfy themselves by inspection or otherwise as to their accuracy. No person in this firms employment has the authority to make or give any representation or warranty in respect of the property.

Area Map



Energy Efficiency Graph

