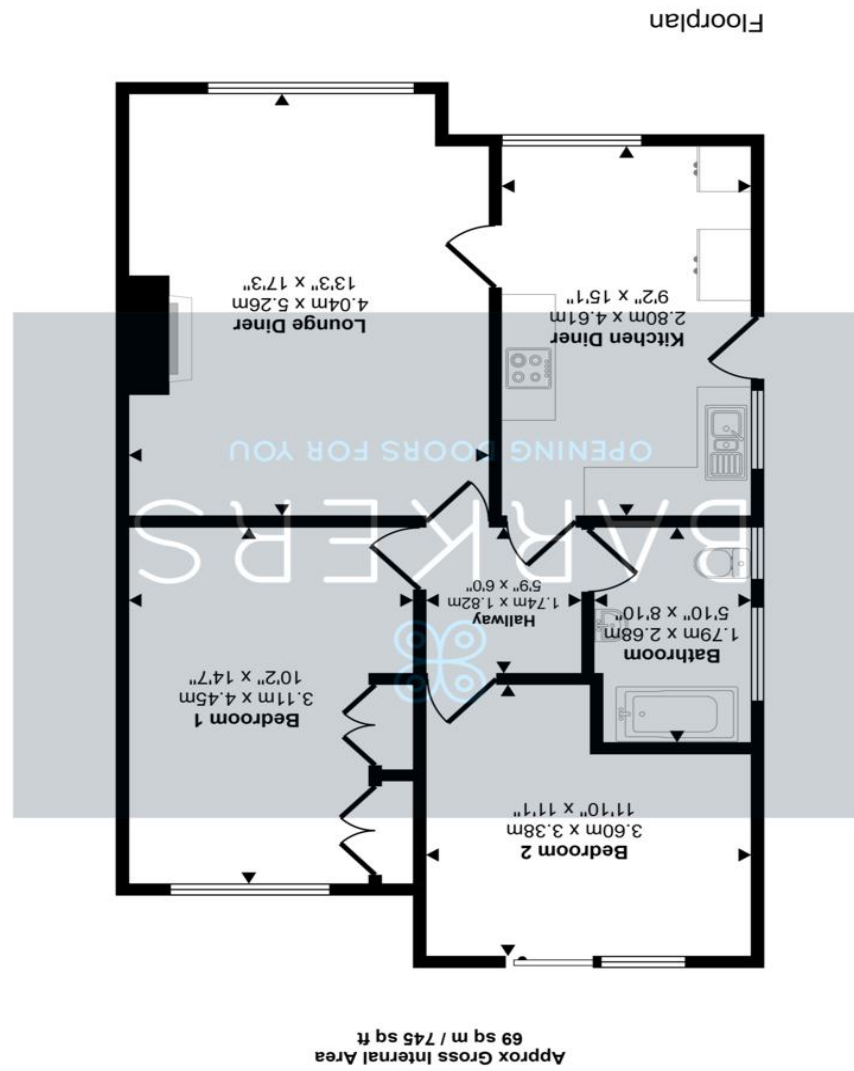


This floorplan is only for illustrative purposes and is not to scale. Measurements of rooms, doors, windows, and any items are approximate and no responsibility is taken for any error, omission or mis-statement. Icons of items such as bathroom suites are representations only and may not look like the real items. Made with Made Snappy 360.



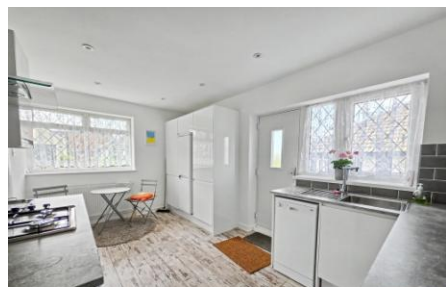
BARKERS
OPENING DOORS FOR YOU

18 Woodlands Avenue

Gomersal, Cleckheaton, BD19 4SW

£260,000

- SEMI DETACHED BUNGALOW
- NEWLY FITTED KITCHEN
- LOUNGE
- TWO BEDROOMS
- HOUSE BATHROOM
- LARGE DRIVEWAY
- SINGLE GARAGE
- LOW MAINTENANCE GARDENS



Full Description

DESCRIPTION

We are pleased to offer for sale this spacious two bedroomed semi-detached bungalow with NO ONWARD CHAIN. The property comprises: newly fitted kitchen/diner, living room, two bedrooms, house bathroom. Lawned garden to the front of the property with large driveway for several vehicles leading to a single garage. To the rear of the property is a low maintenance garden with patio area ideal for outside entertaining.

KITCHEN/DINER

9' 2" x 15' 1" (2.79m x 4.6m)

Composite part glazed door leading into the kitchen, fitted with wall and base units, complementary work surfaces, tiled splashback, inset one and half bowl sink with mixer tap, electric oven with gas hob, plumbing for washing machine and dishwasher, space for fridge/freezer, ceiling spotlights, door leads to inner hall and lounge.

LOUNGE

13' 3" x 17' 3" (4.04m x 5.26m)

Featuring fireplace with electric fire.

HALLWAY

5' 9" x 6' 0" (1.75m x 1.83m)

With access to large spacious loft with pull down ladder ideal for storage, doors leading off into kitchen/diner, lounge, house bathroom, bedrooms.

BEDROOM ONE

10' 2" x 14' 7" (3.1m x 4.44m)

With built in wardrobes.

BEDROOM TWO

11' 10" x 11' 1" (3.61m x 3.38m)

Double bedroom with sliding patio door leading out into the rear garden.

HOUSE BATHROOM

5' 10" x 8' 10" (1.78m x 2.69m)

Fitted with three piece suite comprising low flush WC, pedestal hand wash basin, panelled bath with shower over, fully tiled walls.

EXTERIOR

To the front of the property is a large driveway for several vehicles leading to a single garage, lawned gardens. To the rear of the property is a low maintenance garden with patio area ideal for outside entertaining.

DIRECTIONS

From our Birkenshaw office head south east on Old Lane toward Royds Walk then turn right onto Whitehall Road/A58 at Birkenshaw roundabout take the first exit onto Bradford Road/A651 then turn right onto West Lane then left onto Latham Lane then left onto Cliffe Lane then left onto Woodlands Road then right onto Woodlands Avenue where the property will be located on the right.



ADDITIONAL INFORMATION

Tenure: Freehold

Council Tax Band: B

