



Belmont Street | | London | NW1 8HH

£10,500 Per month

ESON2
REAL ESTATE

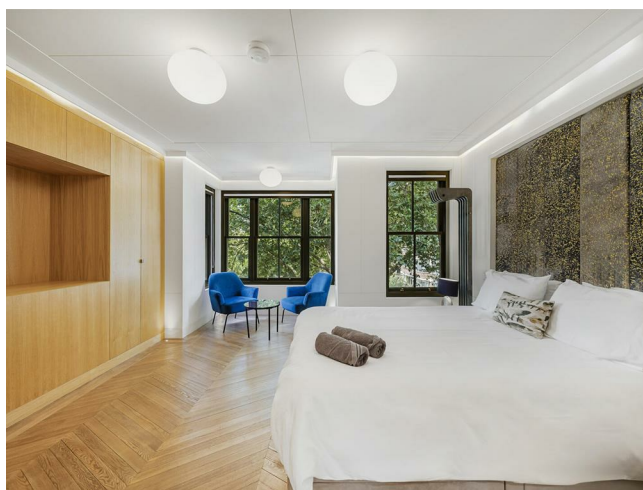
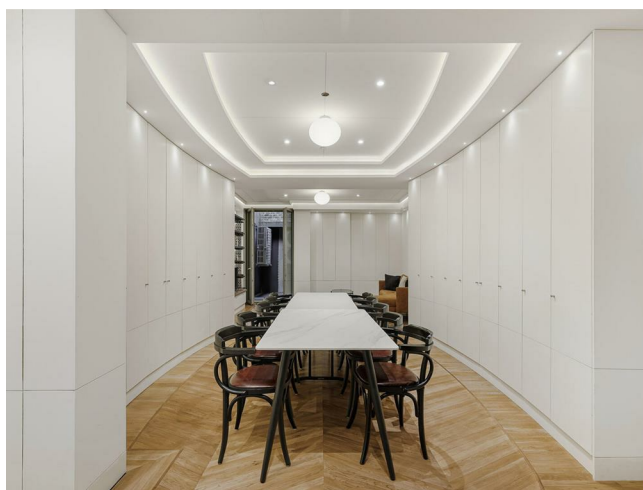
Key features

- High Ceilings
- 5-bed Bed House
- Modern finishes throughout
- Spacious wooden floors
- Bright master suite
- Large kitchen area
- Private bathrooms

Description

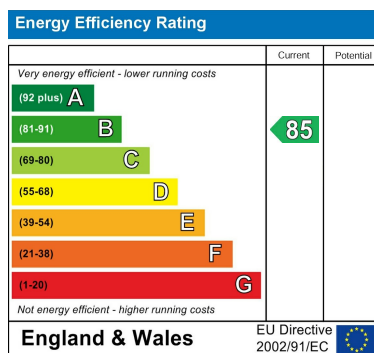
An elegant five-bedroom apartment on Belmont Street. Well-proportioned throughout, the property features high ceilings, wooden flooring and clean, contemporary finishes. A bright principal suite sits alongside a generous kitchen and reception space, designed for comfortable living and easy entertaining. A well-balanced home in a sought-after setting.

Directions



An exceptional five-bedroom apartment on sought-after Belmont Street, combining contemporary design with elegant architectural detail. Arranged over two floors, the property offers generous, well-proportioned living space, enhanced by high ceilings, natural light, and a refined palette of wood and stone finishes.





Council Tax Band EPC Rating **B**



301 Michelin House 81 Fulham road
London
Greater London
SW3 6RD
07920 257649
fayeel@eson2.co.uk
www.eson2.co.uk