



BROCKLEBANK ROAD, SW18

£3,200 PCM

- Split Level Conversion
- Open Plan Living Space
- Three Double Bedrooms
- Highly Desirable Road





## ABOUT THE HOME

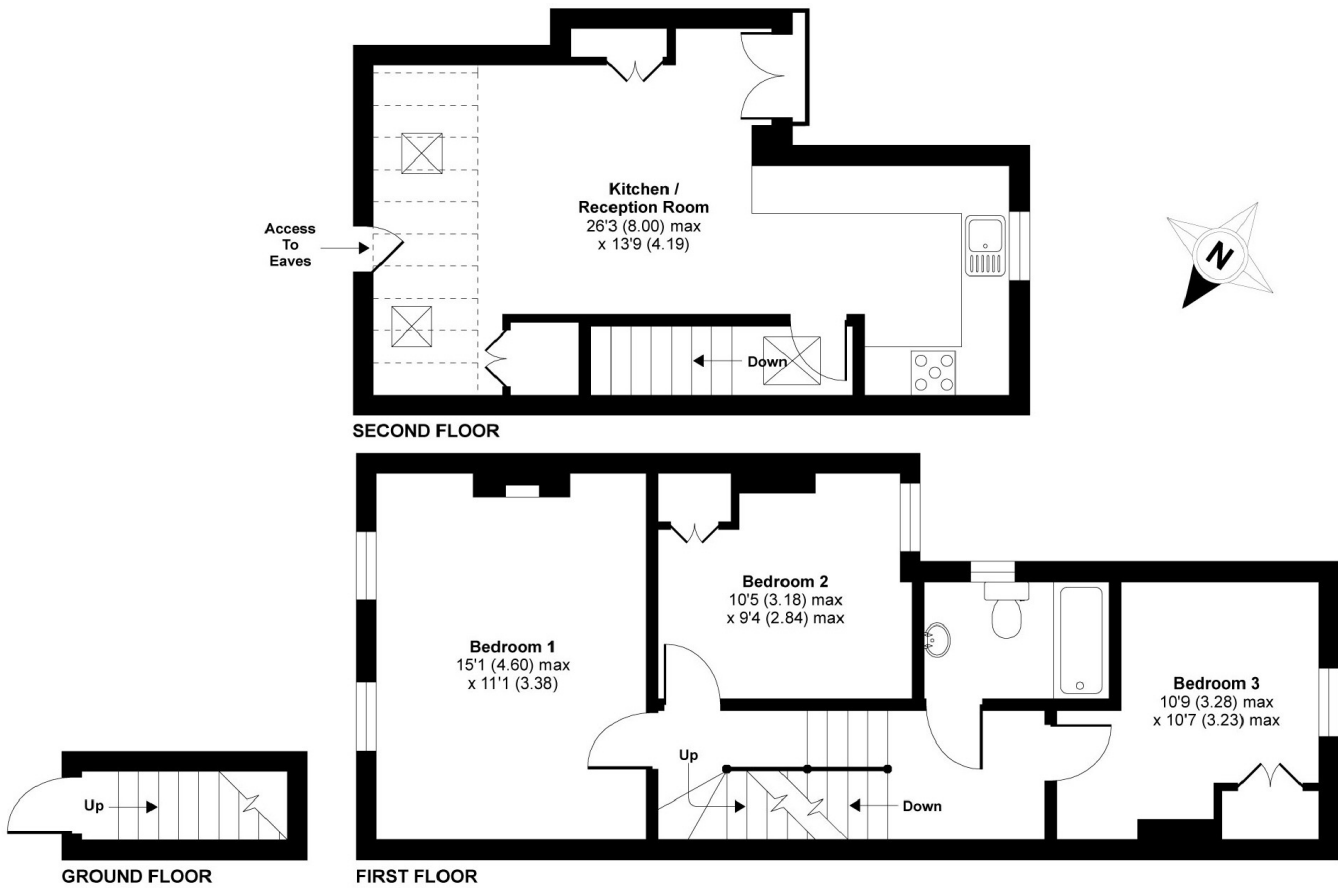
A three double bedroom split level Victorian conversion located on the highly desirable Brocklebank Road.

Finished to a modern standard whilst retaining its charming period features, the property comprises a spacious open plan living area with stylish designer kitchen units and Juliette balcony, three genuine double bedrooms with built in storage and a modern bathroom suite.

Ideally located within close proximity to Earlsfield Station as well as the local amenities of Garratt Lane, The property would make ideal living for professional sharers.







APPROX. GROSS INTERNAL FLOOR AREA 810 SQ FT 75.2 SQ METRES (EXCLUDES RESTRICTED HEAD HEIGHT)

**Brocklebank Road, London, SW18**

Copyright nichecom.co.uk 2015 Produced for Jacksons the Independent Estate Agents REF : 75076

### JACKSONS EARLSFIELD

372-374 Garratt Lane,  
Earlsfield, London, SW18 4ES  
Sales: 020 8971 7979  
Lettings: 020 8971 7070

Energy Rating: Wandsworth Borough Council We aim to make our particulars both accurate and reliable. However they are not guaranteed; nor do they form part of an offer or contract. If you require clarification on any points then please contact us, especially if you're traveling some distance to view. Please note that appliances and heating systems have not been tested and therefore no warranties can be given as to their good working order.