



1, 10 CHARLES STREET

MAYFAIR, W1J

An *exceptional* three bedroom duplex apartment
situated on one of Mayfair's most prestigious residential
streets, just moments from Berkeley Square.



The entrance hall leads to the primary reception room and luxurious master suite, featuring a 7 metre drop to the lower floor following the grand staircase.





OVERVIEW

Set within one of Mayfair's most distinguished addresses, this beautiful apartment seamlessly combines period character with contemporary luxury. Positioned within a handsome historic building, the property retains an exceptional sense of heritage alongside its recent breath-taking redesign.

Occupying two floors of an elegant period building on Charles Street, the apartment offers impressive volume and grand proportions throughout. The raised ground floor includes a reception room and the principal bedroom suite, which features a bespoke walk-in wardrobe and a beautifully designed en suite. The lower ground floor has the second bedroom suite, an outstanding kitchen, a powder room, and the third bedroom with its own private terrace.

Charles Street is ideally positioned between Berkeley Square and Green Park, moments from the boutiques and restaurants of Mount Street, Bond Street, St James's and Piccadilly, placing some of London's finest shopping, dining and green spaces within immediate reach.

The reception room features ornate period elements, including fireplace and soaring ceiling heights, that create an outstanding entertaining space filled with natural light.



Custom Mowlem & Co. kitchen, featuring a Gaggenau multi-function gas cook top with speciality Wok fitting, and beautiful granite surfaces.



The deep cupboards within the bespoke cabinetry, coupled with the integrated Gaggenau ovens, slow cooker and plate warmer, create the perfect kitchen for hosting and sophisticated home-cooking.



The master bedroom boasts generous bespoke built-in wardrobes, with a floor-to-ceiling bow-fronted window and luxurious materials and fittings



Off the master bedroom, a dressing room featuring bespoke cedar drawers and an opulent en suite bathroom.



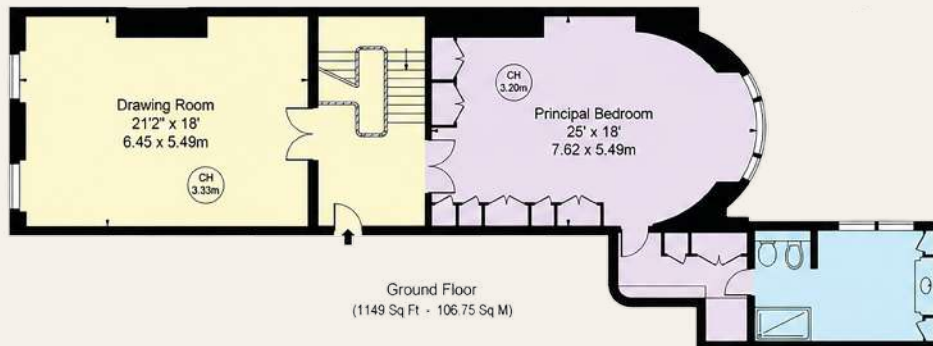
The spacious second bedroom also benefits from custom built-in cupboards, walk-in wardrobe, and a magnificently designed en suite bathroom with stunning granite surfaces.



HIGHLIGHTS

- Private Terrace
- Underfloor Heating
- Air Conditioning
- Period Features
- Gaggenau Kitchen Appliances
- Soaring Ceiling Heights
- Prime Mayfair Location
- In-Built SONOS Surround Sound System
- Integrated Fire Alarm
- Lutron Lighting

The tranquil terrace is fully planted, with an integrated irrigation system, creating a private oasis in the heart of Mayfair.



Ground Floor
(1149 Sq Ft - 106.75 Sq M)



Lower Ground Floor
(1171 Sq Ft - 108.79 Sq M)

APPROX. GROSS INTERNAL AREA: 2,320 SQ. FT (215.54 SQ. M)
APPROX. INTERNAL AREA OF VAULTS: 178 SQ. FT (16.55 SQ. M)
APPROX. EXTERNAL AREA OF TERRACE: 258 SQ. FT (23.79 SQ. M)

£6,900,000

EPC: B

SERVICE CHARGE: £10,500 P/A

SHARE OF FREEHOLD



WETHERELL
MAYFAIR'S FINEST PROPERTIES

102 Mount Street, London, W1K 2TH

020 7529 5566

wetherell.co.uk

Wetherell have no authority to make or give any representations or warranties in relation to the property. These particulars do not form part of any offer or contract and must not be relied upon as statements or representations of fact. Any areas, measurements or distances are approximate. The text, photographs and plans are for guidance only and are not necessarily comprehensive. It should not be assumed that the property has all the necessary planning, building regulation or other consents and Wetherell have not tested any services, equipment or facilities. Purchasers must satisfy themselves by inspection or otherwise. June 2026.