

Aldreds
Estate Agents



Chapters 53 Station Road North

Belton, Great Yarmouth, NR31 9NG

Offers In Excess Of £290,000



4



1



1



B

Chapters 53 Station Road North

Belton, Great Yarmouth, NR31 9NG

Sitting on the popular Station Road North, Aldreds are delighted to offer this spacious four bedroom detached house with good sized garden, solar panels and garage. On the ground floor there is an entrance hall, lounge, kitchen, utility room and a cloakroom. The first floor offers a landing, four bedrooms and a bathroom. Gas central heating and double glazing. Driveway

Entrance Hall

Stairs to landing, door to side, radiator

Lounge

20'9" x 13'10" (6.35 x 4.22)

Double glazed doors to garden, double glazed window to rear aspect, radiator

Kitchen

12'1" x 9'6" (3.7 x 2.9)

Base & wall units with worktops, sink with drainer, double glazed window to front aspect, tiled floor, electric hob, electric oven, breakfast bar, plumbing for dishwasher, walk in cupboard

Utility Room

Plumbing for washing machine, door to

Cloakroom

Low level WC, hand basin, opaque double glazed window to side aspect

Landing

Bedroom 1

13'11" x 10'5" (4.25 x 3.18)

Double glazed window to rear aspect, radiator

Bedroom 2

13'10" x 10'2" (4.24 x 3.1)

Double glazed window to rear aspect, radiator

Bedroom 3

11'2" x 9'10" (3.42 x 3)

Built in wardrobes, double glazed window to front aspect, radiator





Bedroom 4

11'4" x 7'10" (3.46 x 2.4)

Double glazed window to front aspect, double glazed window to side aspect, radiator

Bathroom

7'3" x 7'1" (2.23 x 2.18)

Panel bath with shower over, hand basin, low level WC, tiled walls, opaque double glazed window to side aspect, heated towel rail

Outside

To the front there is a driveway to garage, the garage has an up & over door. To the rear there is a garden

Tenure

Freehold

Services

Mains water, electricity, gas, drainage

Council Tax

Band C

Location

Belton is situated 3 miles west of Gorleston and 5 miles from Great Yarmouth * There are a selection of local shops * Primary and Middle schools * The River Waveney runs through the adjoining village of Burgh Castle with its historic Roman site and Marina * There are regular bus services to Great Yarmouth.

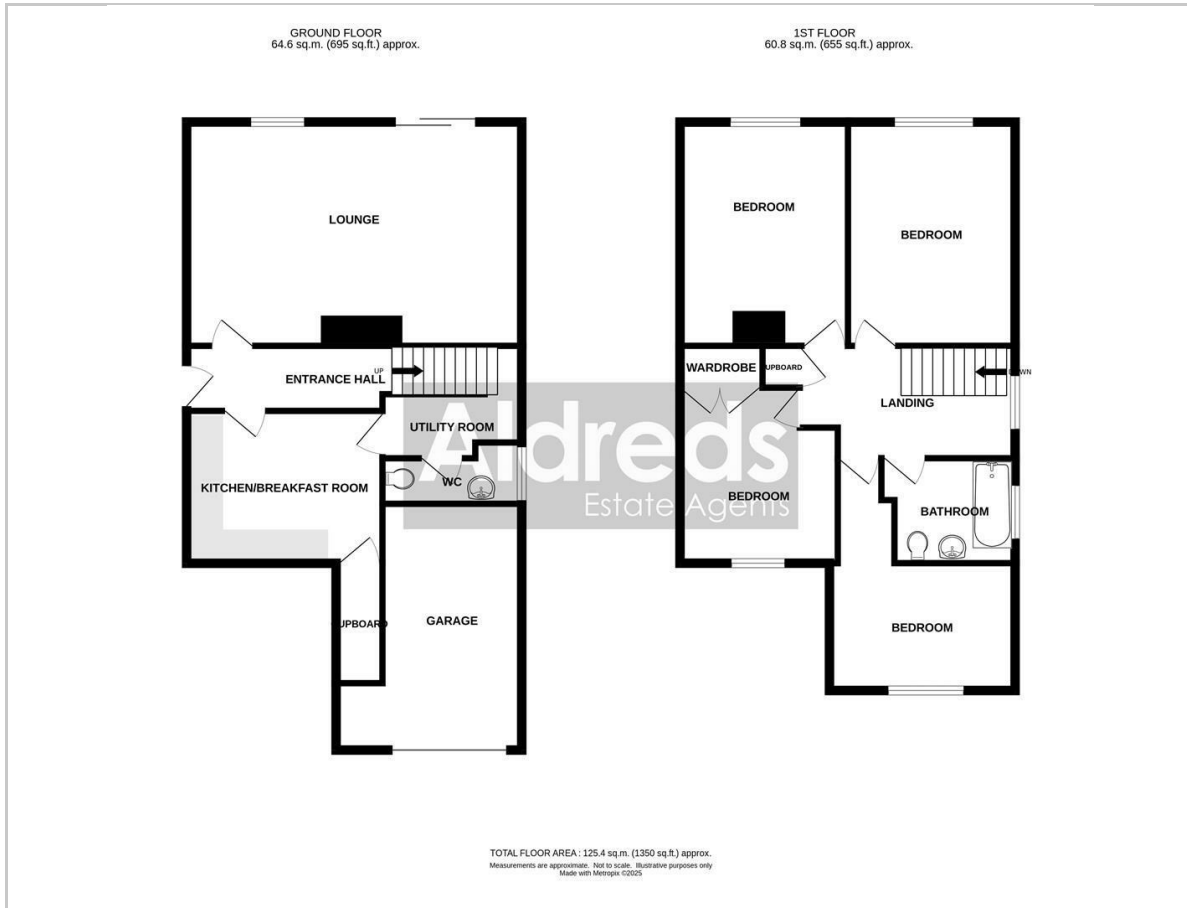
Directions

Heading south out of Bradwell on the A143, proceed over the roundabout (2nd exit), remaining on the A143. The take the first turning on the right (signposted to Belton) onto Beccles Road. Follow Beccles Road into Belton and take the first turning on the left onto Station Road South which leads into Station Road North where the property will be found on the left.

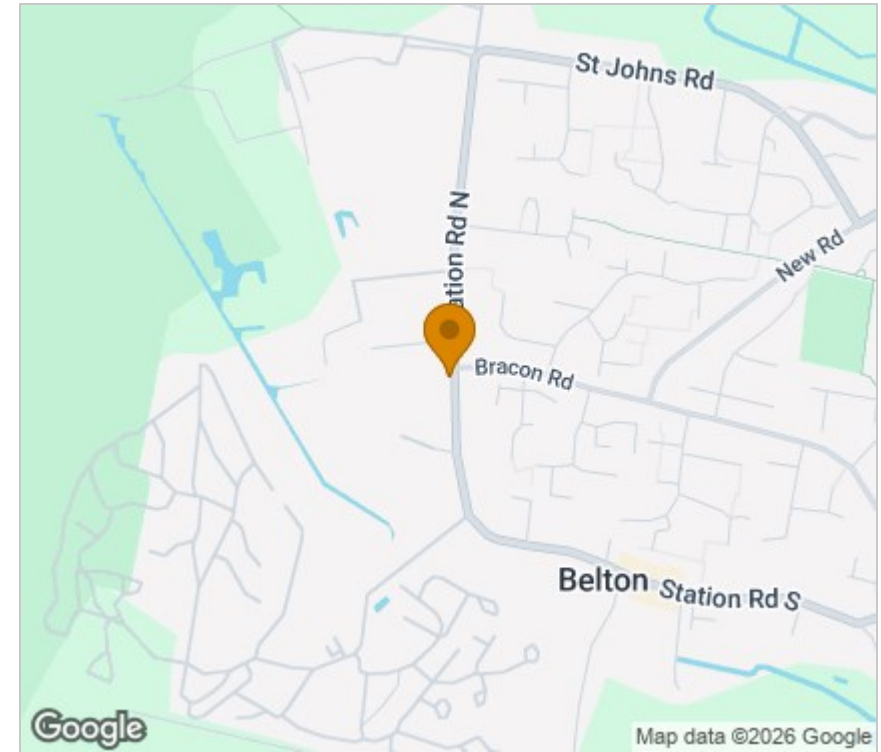
Ref G18372/09/25



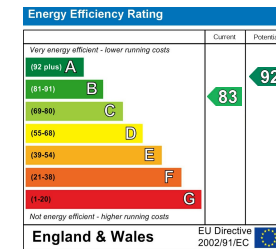
Floor Plan



Area Map



Energy Efficiency Graph



Viewing

Please contact our Aldreds Gorleston Office on 01493 664600 if you wish to arrange a viewing appointment for this property or require further information.

Disclaimer

These particulars are issued on an understanding that all negotiations shall be conducted through Messrs. Aldreds. Please note: Messrs. Aldreds for themselves and for the vendors or lessors of this property whose agents they are given notice that: 1. Particulars are set out as a general outline only for guidance of intending purchasers or lessees, and do not constitute nor constitute part of, an offer or contract. 2. All descriptions, dimensions, references to condition and necessary permissions for use and occupation, and other details are given without responsibility and any intending purchasers or tenants should not rely on them as statements or representations of fact but must satisfy themselves by inspection or otherwise as to the correctness of each of them. 3. No person in the employment of Messrs. Aldreds has any authority to make or give any representation or warranty whatever in relation to this property. 4. If you are proposing to visit the property and are travelling some distance please check with Aldreds on the issue of availability prior to travelling. 5. Aldreds Property Consultants and associated services may offer additional services to the prospective purchaser for which they will be entitled to receive a commission.

Aldreds are pleased to be working with Mortgage Advice Bureau. They're an award-winning mortgage broker with over 1,400 advisers across the UK, and have access to over 12,000 mortgage products from over 90 lenders. Aldreds Estate Agents Ltd receive a commission of £200 on each completed case. Your home may be repossessed if you do not keep up repayments on your mortgage. There may be a fee for mortgage advice. The actual amount you pay will depend upon your circumstances. The fee is up to 1%, but a typical fee is 0.3% of the amount borrowed. Mortgage Advice Bureau is a trading name of Mortgage Seeker Limited which is an appointed representative of Mortgage Advice Bureau Limited and Mortgage Advice Bureau (Derby) Limited which are authorised and regulated by the Financial Conduct Authority. Mortgage Seeker Limited Registered Office: Lovewell Blake, Sixty Six North Quay, Great Yarmouth, Norfolk, NR30 1HE. Registered in England Number: 03721415. 6. Potential purchasers should check with their providers that the broadband and mobile phone coverage they would require is available.

149 High Street, Gorleston, Norfolk, NR31 6RB

Tel: 01493 664600 Email: gorleston@aldreds.co.uk <https://www.aldreds.co.uk/>

Registered in England Reg. No. 08945751 Registered Office: 17 Hall Quay, Great Yarmouth, Norfolk NR30 1HJ

Directors: Mark Duffield B.S.c. FRICS. Dan Crawley MNAEA Paul Lambert MNAEA