



HARDINGS




Fountain Gardens
Guide Price £395,000



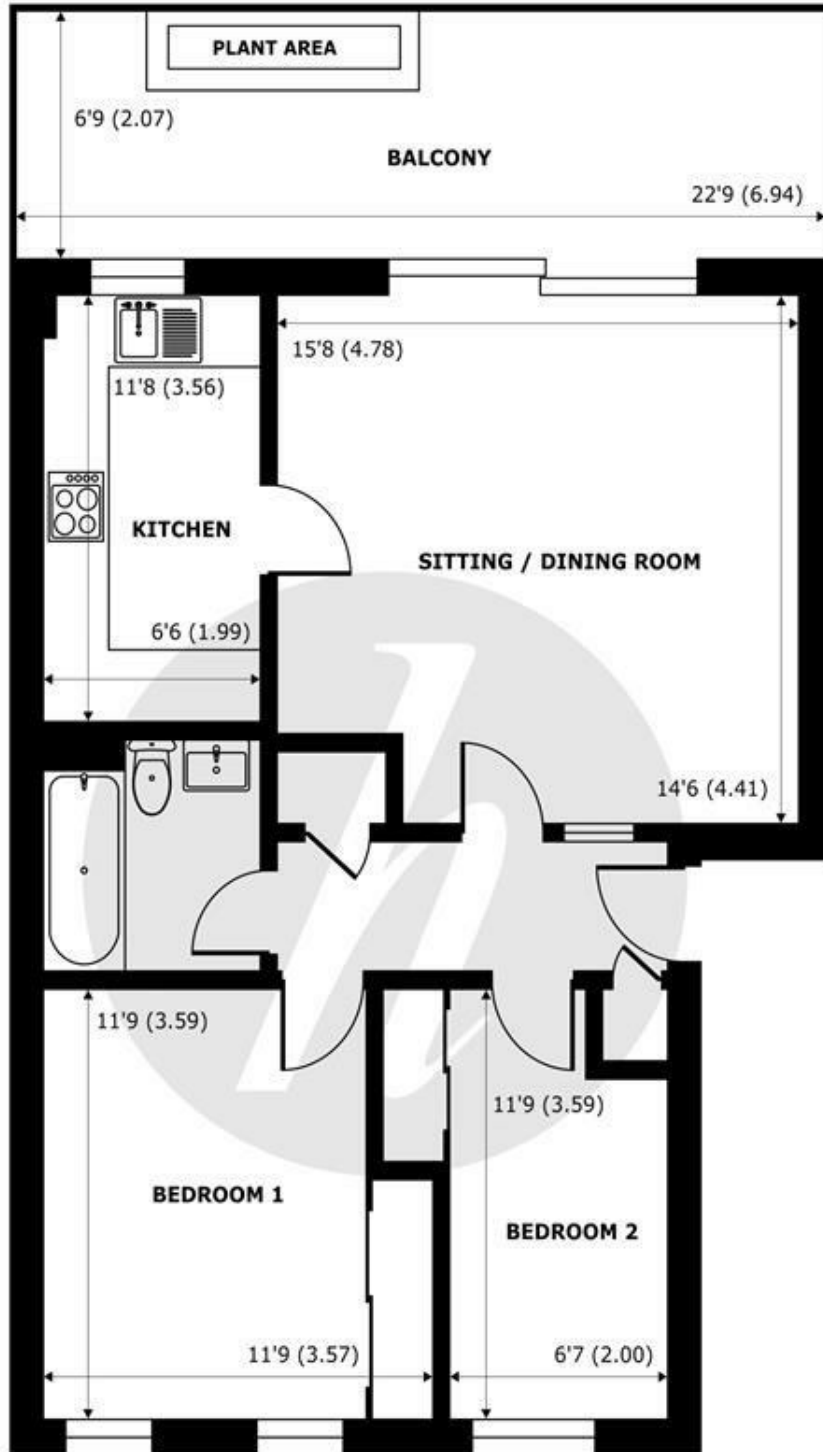
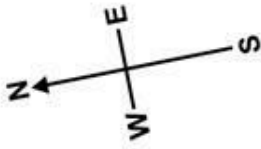


A stunning 2 bedroom ground floor apartment with private terraced area located in this popular residential development close to The Long Walk and Windsor Great Park. The property is a short walk to array of shops, bars and restaurants in Windsor town centre and railway links London. Further benefits are a separate garage in a block, off street parking and well maintained communal gardens.

Energy Efficiency Rating		
	Current	Potential
Very energy efficient - lower running costs		
(92 plus) A		
(81-91) B		
(69-80) C	78	79
(55-68) D		
(39-54) E		
(21-38) F		
(1-20) G		
Not energy efficient - higher running costs		
England & Wales	EU Directive 2002/91/EC 	

Features

- Attractive 2 bed ground floor apartment with outside space
- Sought after location near Long Walk and Windsor Great Park
- Covered terraced area with pretty views
- Short walk to Town centre and Railway Links
- Long lease
- 2 Bedrooms /1 bathroom
- Secluded and peaceful position within development
- Garage in a block
- Off street parking
- Open plan/living dining



FIRST FLOOR
abt 744 SQFT (69.1 SQMT)

Fountain Gardens, Windsor, SL4

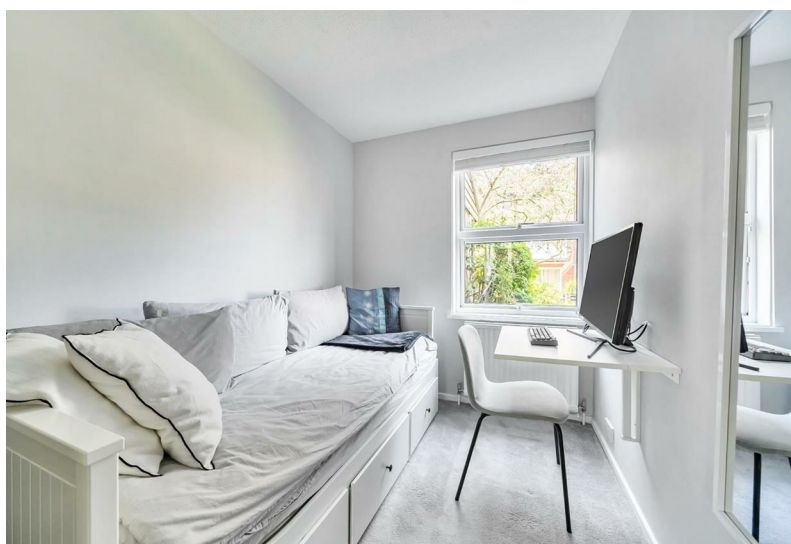
Approximate Internal Area = 634 sq ft / 58.9 sq m
Approximate External Area = 744 sq ft / 69.1 sq m

For identification only - Not to scale



Floor plan produced in accordance with RICS Property Measurement 2nd Edition, Incorporating International Property Measurement Standards (IPMS2 Residential). © nichecom 2026. Produced for Hardings. REF: 1441629





11 High Street, Windsor, Berkshire, SL4 1LD,
T: 01753 833 118 | E: info@hardings.co.uk
www.hardings.co.uk

