

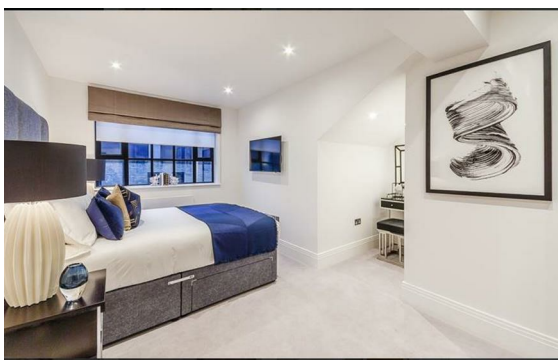


**Rainville Road, Hammersmith, London, W6**

Rent £1,355 Per Month

2 Bed | 2 Bath | 1 Reception

*Please call us on 020 7724 2233 or email us [info@newingtonstates.com](mailto:info@newingtonstates.com) to book a viewing.*



An exceptional interior-designed two-bedroom, two-bathroom second-floor apartment with a private terrace and river views, set within a gated, warehouse-style riverside development. The property features a spacious semi open-plan kitchen and living area, finished to a high specification throughout. The principal bedroom benefits from an en-suite shower room, while a stylish guest bathroom serves the second bedroom. Both bathrooms include underfloor heating, and the bedrooms offer bespoke mirrored wardrobes with automatic lighting.

The Metris kitchen is fully fitted with premium Miele appliances and a Caple wine cooler, combining functionality with luxury. Additional features include a Crestron audio-visual system, video entry, and pre-wiring for Sky+ TV. Ideally located on the River Thames, the development offers excellent access to Hammersmith, Barons Court, Putney Bridge, and Fulham Broadway stations, along with multiple bus routes.

## Energy Efficiency Rating: C

Agents Note: Whilst every care has been taken to prepare these particulars, they are for guidance purposes only. All measurements are approximate and are for general guidance purposes only and whilst every care has been taken to ensure their accuracy, they should not be relied upon and potential buyers/tenants are advised to recheck the measurements.

**NEWINGTON**  
— ESTATES —

60 Upper Montagu Street

London

W1H 1SN

020 7724 2233

[info@newingtonestates.com](mailto:info@newingtonestates.com)

<http://www.newingtonestates.com>