



ANDREW
EXELBY
ESTATE AGENTS

Penlee Street, Penzance TR18

Guide Price £225,000

🛏 2 🚿 1 🚗 1



- OFFERED TO THE MARKET WITH NO ONWARD CHAIN
- EXTREMELY WELL PRESENTED THROUGHOUT
- GAS CENTRAL HEATING
- MUST BE VIEWED TO BE APPRECIATED
-
- TWO BEDROOM MID TERRACE TOWNHOUSE
- PARTIAL UPVC DOUBLE GLAZING
- REAR COURTYARD WITH EXTERNAL UTILITY ROOM
- EPC RATING - D67 / COUNCIL TAX BAND - B
-



ANDREW
EXELBY
ESTATE AGENTS



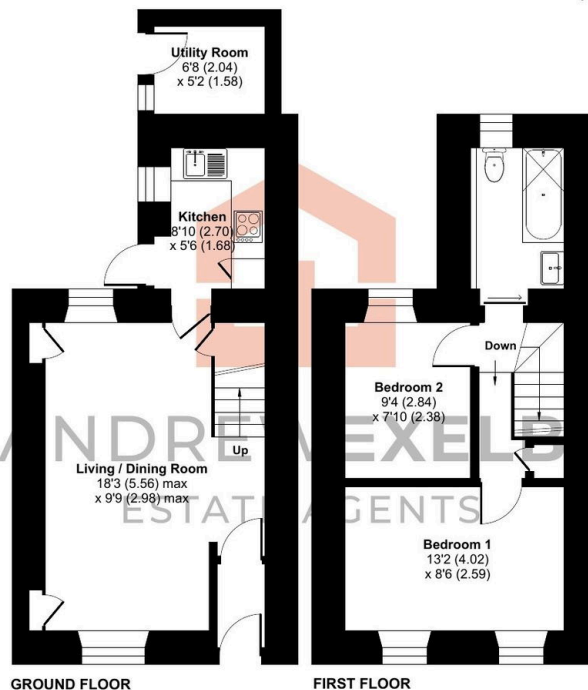
Penlee Street, Penzance, TR18

Approximate Area = 595 sq ft / 55.2 sq m

Outbuilding = 34 sq ft / 3.1 sq m

Total = 629 sq ft / 58.3 sq m

For identification only - Not to scale



Floor plan produced in accordance with RICS Property Measurement 2nd Edition, Incorporating International Property Measurement Standards (IPMS2 Residential). © nixhecom 2025. Produced for Andrew Exelby Estate Agents. REF: 1374250

Offered to the market with NO ONWARD CHAIN is this extremely well presented two bedroom mid-terrace townhouse that is conveniently located for the town of Penzance. This lovely home benefits from partial uPVC double glazing along with an attractive courtyard to the rear.