



Priams Way, Stapleford Cambridge  
**Guide Price £400,000 Freehold**

**Sharman  
Quinney**

# Key Features



- Sale by Modern Auction (T&Cs apply)
- Subject to an undisclosed Reserve Price
- Buyers fees apply
- Three bedroom semi detached family home
- Bay fronted living room with excellent natural light
- Study overlooking front garden
- Generous rear garden with potential to extend (STP)
- Driveway parking and single garage

Ideally located within a short walk of the village mainline station and local amenities, this property offers fantastic scope to adapt and grow into a long-term family home.

The accommodation opens with an inviting entrance hall that leads into a bright, bay-fronted living room, filled with natural light. Beyond this is the kitchen that enjoys views over the rear garden. At the front of the property sits a versatile



study, while a third bedroom is positioned to the rear, accompanied by a family bathroom.

Upstairs, the home offers two generously sized double bedrooms, both thoughtfully laid out to provide comfortable and well-balanced living.

Externally, the property is set back from the road and benefits from a low-maintenance front garden, along with driveway parking leading to a single garage.

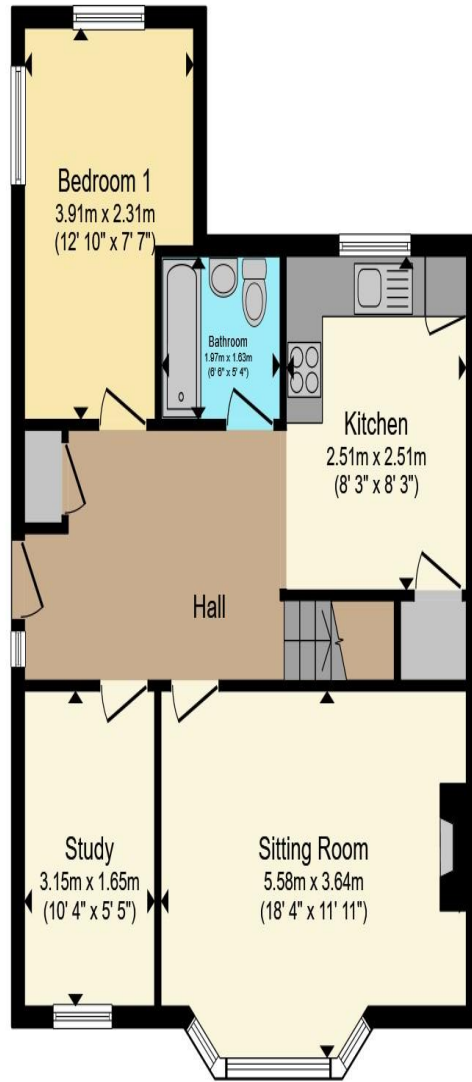
The rear garden is particularly spacious, mainly laid to lawn, and provides excellent potential for extension (subject to planning).

Stapleford is a highly sought-after village located approximately four miles south of Cambridge. Shelford train station is within easy walking distance, offering regular services to Cambridge, Cambridge North, and London Liverpool Street.

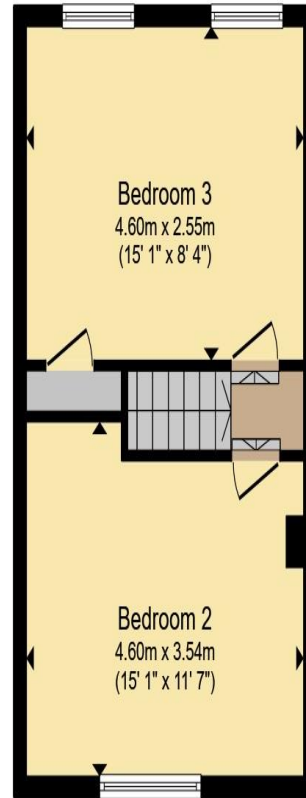
The forthcoming Cambridge South station will provide an additional nearby stop, improving access to Addenbrooke's Hospital and the Biomedical Campus.

The DNA pathway also offers a convenient and direct route from Shelford into Cambridge via the medical campus.





**Ground Floor**



**First Floor**

- Entrance hall
- Living room
- Kitchen
- Study
- Bedroom 3
- Bathroom
- First floor landing
- Bedroom 1
- Bedroom 2

All measurements are listed on the floor plan.

Total floor area 96.9 m<sup>2</sup> (1,043 sq.ft.) approx

This floor plan is for illustrative purposes only. It is not drawn to scale. Any measurements, floor areas (including any total floor area), openings and orientation are approximate. No details are guaranteed, they cannot be relied upon for any purpose and they do not form part of any agreement. No liability is taken for any error, omission or misstatement. A party must rely upon its own inspection(s). Powered by [www.propertybox.io](http://www.propertybox.io)


**Sharman  
Quinney**

To view this property call Sharman Quinney on:  
**01223 844760**

# Selling your property?

Contact us to arrange a **FREE** home valuation.

 01223 844760

 49 Woollards Lane, Great Shelford, CAMBRIDGE,  
Cambridgeshire, CB22 5LZ

 [greatshelford@sharmanquinney.co.uk](mailto:greatshelford@sharmanquinney.co.uk)

 [www.sharmanquinney.co.uk](http://www.sharmanquinney.co.uk)



 SCAN ME



Sharman Quinney Holdings Limited is registered in England and Wales under company number 4174227, Registered Office is Cumbria House, 16-20 Hockliffe Street, Leighton Buzzard, Bedfordshire, LU7 1GN. VAT Registration Number is 500 2481 05.

1: These particulars do not constitute part or all of an offer or contract. 2: The measurements indicated are supplied for guidance only and as such must be considered incorrect. 3: Potential buyers are advised to recheck the measurements before committing to any expense. 4: Sharman Quinney has not tested any apparatus, equipment, fixtures, fittings or services and it is the buyers interests to check the working condition of any appliances. 5: Sharman Quinney has not sought to verify the legal title of the property and buyers must obtain verification from their legal representative. 6: Intending purchasers will be asked to produce identification documentation at a later stage and we would ask your co-operation in order that there will be no delay in agreeing the sale. Ref: GTS103096 - 0010

