



Musgrave Court  
110 Battersea Bridge Road, SW11









SHORT LET with all bills included.

This one bedroom apartment is offered in immaculate condition and benefits from a gorgeous bright open plan kitchen reception room. There is a large double bedroom with extensive storage, a modern bathroom, and an additional study space.

The property has been redecorated with furniture added to create a gorgeous and pristine short term home.

Musgrave Court is ideally located close to Battersea Park and a short walk across Battersea Bridge to the wonders that Chelsea has to offer. Additionally, the location offers an array of patisseries, cafes, restaurants, pubs and shops on your doorstep, so you only have to step out your door to feel the buzz of London!

- Short Let
- Bills Included
- Fully Furnished
- Hard Floor Throughout

### £2,500 pcm

Additional tenant charges apply (fees apply to non-AST tenancies only)

Tenancy Agreement Fee: £300

References per Tenant/Guarantor: £60

Inventory check (approx. £100 – £250 inc. VAT)

[chestertons.co.uk/property-to-rent/applicable-fees](http://chestertons.co.uk/property-to-rent/applicable-fees)

Energy Efficiency Rating		
Energy efficient - lower running costs	Current	Potential
A (94-100)		
B (81-93)	81	82
C (69-80)		
D (55-68)		
E (39-54)		
F (21-38)		
G (1-20)		
Not energy efficient - higher running costs		
EU Directive 2002/91/EC		
England, Scotland & Wales		

**Minimum Term:** 1 months  
**Deposit Required:** £2,307.69  
**Local Authority:** London Borough of Wandsworth  
**Council Tax Band:** B  
**EPC Rating:** B  
**Furnished**

### Chestertons Battersea Park & Nine Elms Lettings

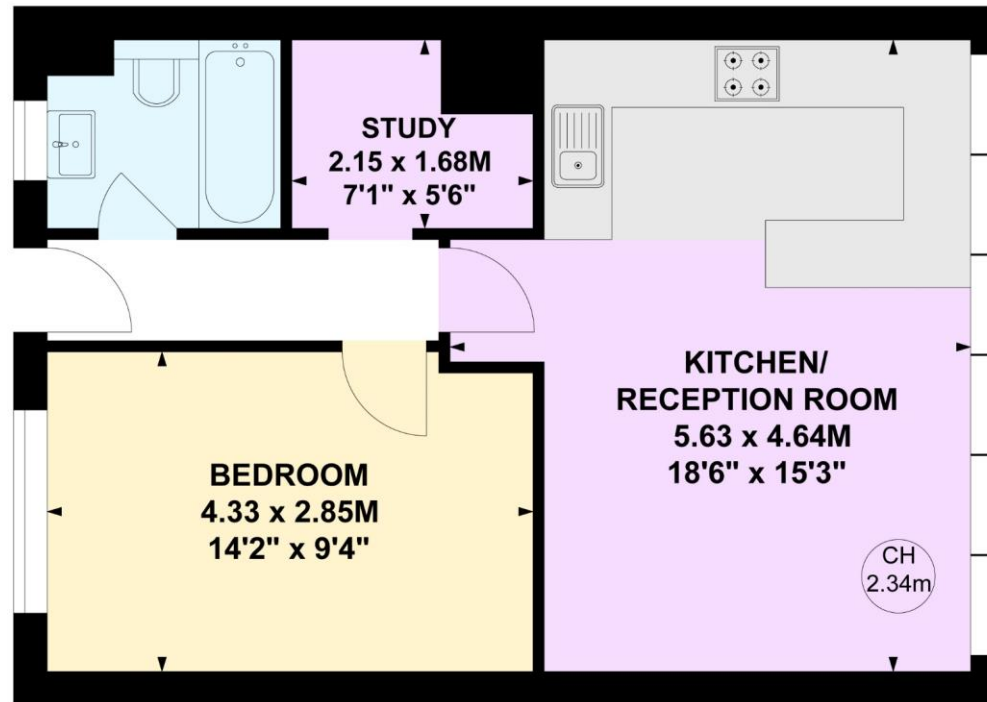
62-64 Battersea Bridge Road  
 London  
 SW11 3AG

[batterseapark@chestertons.co.uk](mailto:batterseapark@chestertons.co.uk)  
 02030408269  
[chestertons.co.uk](http://chestertons.co.uk)

# Musgrave Court, Battersea Bridge Road, SW11

Key :  
CH - Ceiling Height

Approximate gross internal area  
46.33 sq m / 498 sq ft



## Third Floor

Not to scale, for guidance only and must not be relied upon as a statement of fact.  
All measurements and areas are approximate only

Chesterton UK Services Limited trading as Chestertons for themselves and for the vendor of this property whose agents they are, give notice that (i) these particulars do not constitute any part of an offer or contract, (ii) all statements contained within these particulars are made without responsibility on the part of Chestertons or the vendor, (iii) whilst made in good faith, none of the statements contained within these particulars are to be relied upon as a statement or representation of fact, (iv) any intending purchasers must satisfy themselves by inspection or otherwise as to the correctness of each of the statements contained within these particulars, (v) the vendor does not make or give either Chestertons or any person in their employment any authority to make or give representation or warranty whatsoever in relation to this property. Wide angle lenses may be used. ©Copyright Chestertons | Chesterton Global Ltd | Registered Office 40 Connaught Street, Hyde Park, London W2 2AB Registered Company Number 05334580.



This paper is  
100% recyclable