



Great Eastern Road, London E15
£445,000 Leasehold







Description

Stratosphere Tower offers contemporary living in the heart of Stratford's thriving district, with excellent resident amenities including 24-hour concierge, gymnasium, and communal roof terrace.

This beautifully appointed one-bedroom apartment enjoys an elevated position with abundant natural light throughout. The thoughtfully designed interior maximises the approximately 571 square feet of living space, featuring modern specification and quality finishes. The private winter garden extends the living area, providing a sheltered outdoor retreat perfect for year-round enjoyment. Residents benefit from the building's comprehensive amenities, creating a sophisticated yet practical lifestyle environment.

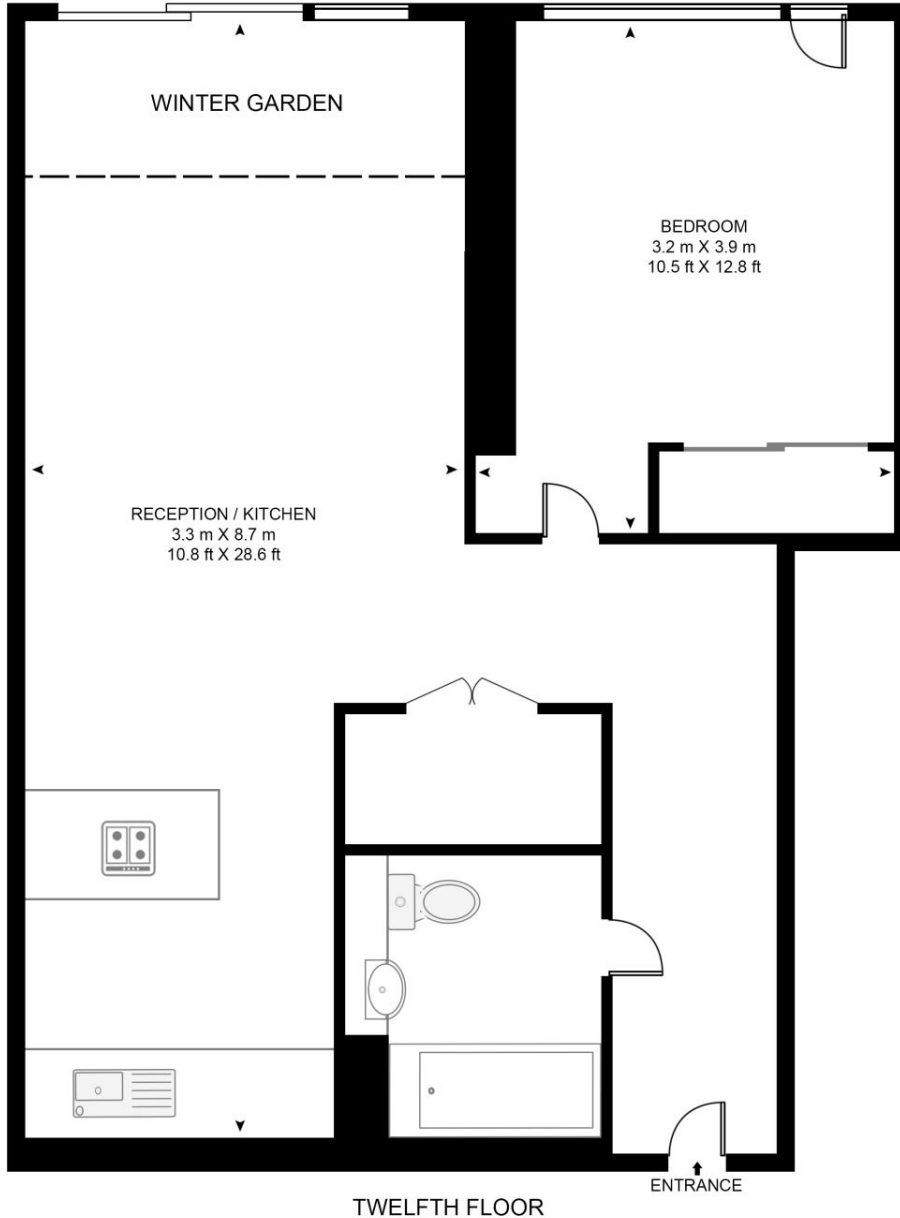
Stratford has transformed into one of London's most vibrant hubs, blending world-class sporting heritage with contemporary cultural offerings. The area surrounding Queen Elizabeth Olympic Park provides extensive green spaces, waterways, and leisure facilities, whilst the neighbourhood's thriving dining and entertainment scene continues to flourish. The perfect balance of urban energy and accessible parkland creates an enviable lifestyle for discerning residents.

- One bedroom apartment
- Residents' gym
- Communal roof terrace
- 24h Concierge
- Winter garden
- 12th Floor with lift access
- Approx. 571 sq. ft (52.9 sq. m)
- Moments from Stratford station
- Within a short walk of Westfield
- EPC Rating B

Floorplan

571 sq ft | 53 sq m

STRATOSPHERE TOWER, GREAT EASTERN ROAD
APPROXIMATE GROSS INTERNAL FLOOR AREA 571 SQ.FT (52.9 SQ.M)



This floor plan has been defined by the RICS Code of Measurement. This floor plan and all others are for approximate representative purposes only and upon usage is agreed to as such by the client.
WWW: hdvirtualart.com | TEL: 0203.974.1567 | EMAIL: info@hdvirtualart.com

Stratford
5 Station Street,
London E15 1DA
+4420 3147 1500
Lettingsstratford@eu.jll.com

Urban living, your way.

jll.co.uk/residential

© 2019 Jones Lang LaSalle IP, Inc. All rights reserved. All information contained herein is from sources deemed reliable; however, no representation or warranty is made to the accuracy thereof.

