



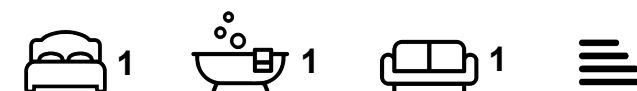
Apartment

FLAT 15, 16 ASH GROVE, HYDE PARK, LEEDS, LS6 1AY

Per Month

£795 Per

FEATURES



SJM ©
PROPERTIES

1 Bedroom Apartment located in Leeds

SEASONAL BACKGROUND CENTRAL HEATING IS PROVIDED AT THIS PROPERTY AT NO EXTRA COST

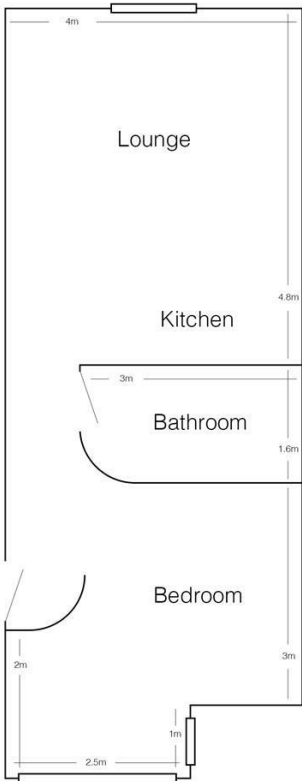
Recently built 1 bedroom furnished flat in the heart of Hyde Park a 2 min walk from Sainsburys and the Hyde Park Cinema.

The lounge has a wood floor and is furnished with leather sofas and a wall mounted flat screen TV.

The modern kitchen has a fridge freezer, washer dryer and a fan oven with ceramic hob.

The bedroom has a UNIQUE double bed with a wardrobe, desk, chair and a wall mounted TV

The property has some off street parking, secure entry and an alarm.



Flat 15, 16 Ash Grove
(drawing not to scale)

Call us on

01132782201

phil@sjm-properties.com
sjm-properties.com

Council Tax Band

A

Energy Efficiency Rating		
	Current	Potential
Very energy efficient - lower running costs		
(92 plus) A		
(81-91) B		
(69-80) C		
(55-68) D		
(39-54) E		
(21-38) F		
(1-20) G		
Not energy efficient - higher running costs		
England & Wales		EU Directive 2002/91/EC

Agents Note: Whilst every care has been taken to prepare these particulars, they are for guidance purposes only. All measurements are approximate and are for general guidance purposes only and whilst every care has been taken to ensure their accuracy, they should not be relied upon and potential buyers are advised to recheck the measurements.

SJM [©]
PROPERTIES