



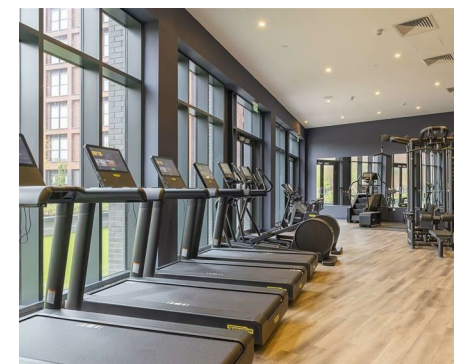
Let **UK** Home

2 Bedrooms

Flat

**Located
in Birmingham**

£1,735 Per Month



pmadmin@letukhome.co.uk

<https://www.letukhome.co.uk/>

0121 828 8955



1 Ryland Street Birmingham

B15 1AX



Let UK Home are excited to offer a stunning two-bedroom apartment in Cortland Broad St. located at 1 Ryland St, Birmingham B15.

This apartment comprises a bright open plan kitchen and living room, two double bedrooms with wardrobes(master with ensuite), a modern family sized bathroom and ample storage.

The apartment offers luxurious amenities for residents in Birmingham, including a high-end private clubhouse, concierge and security services, a fully equipped gym, an indoor climbing wall, SkyLounge with panoramic terrace, private cinema, co-working spaces, and a dedicated pet park, catering to all residential, social, work, and fitness needs.

Surrounded by prestigious schools, it is within walking distance to the University of Birmingham and Birmingham City University, and a short drive to Aston University and Birmingham College, providing easy access to quality educational resources.

Within walking distance to the two main train stations, New Street and Snow Hill, and close to the Midland Metro tram stops, connecting all city areas efficiently for commuting.

Located in the heart of Broad Street, the area is home to renowned restaurants such as Opheem and Purnell's, various specialty cafés and bars, and within walking distance to Chinatown with a variety of Chinese restaurants to satisfy your taste buds. A short walk also reaches Bullring & Grand Central shopping centers,

1 Ryland Street Birmingham

£1,735 Per Month

- 1st Floor
- 24h Security
- Co-working Space
- Sky Lounge
- Indoor Climbing Wall
- Concierge Service
- The Gym
- Cinema
- Club
- EPC Rating: B





Total floor area

52 square metres



Let **UK** Home

Let UK Home
 JQ Modern 120 Vyse St
 Birmingham
 B18 6NF

0121 828 8955

padmin@letukhome.co.uk

Council Tax Band: C

Local Authority:

Agents Note: Whilst every care has been taken to prepare these particulars, they are for guidance purposes only. All measurements are approximate and are for general guidance purposes only and whilst every care has been taken to ensure their accuracy, they should not be relied upon and potential buyers/tenants are advised to recheck the measurements.

Energy Efficiency Rating		Current	Potential
Very energy efficient - lower running costs			
(92 plus) A			
(81-91) B		88	88
(69-80) C			
(55-68) D			
(39-54) E			
(21-38) F			
(1-20) G			
Not energy efficient - higher running costs			
England & Wales	EU Directive 2002/91/EC		

<https://www.letukhome.co.uk/>