

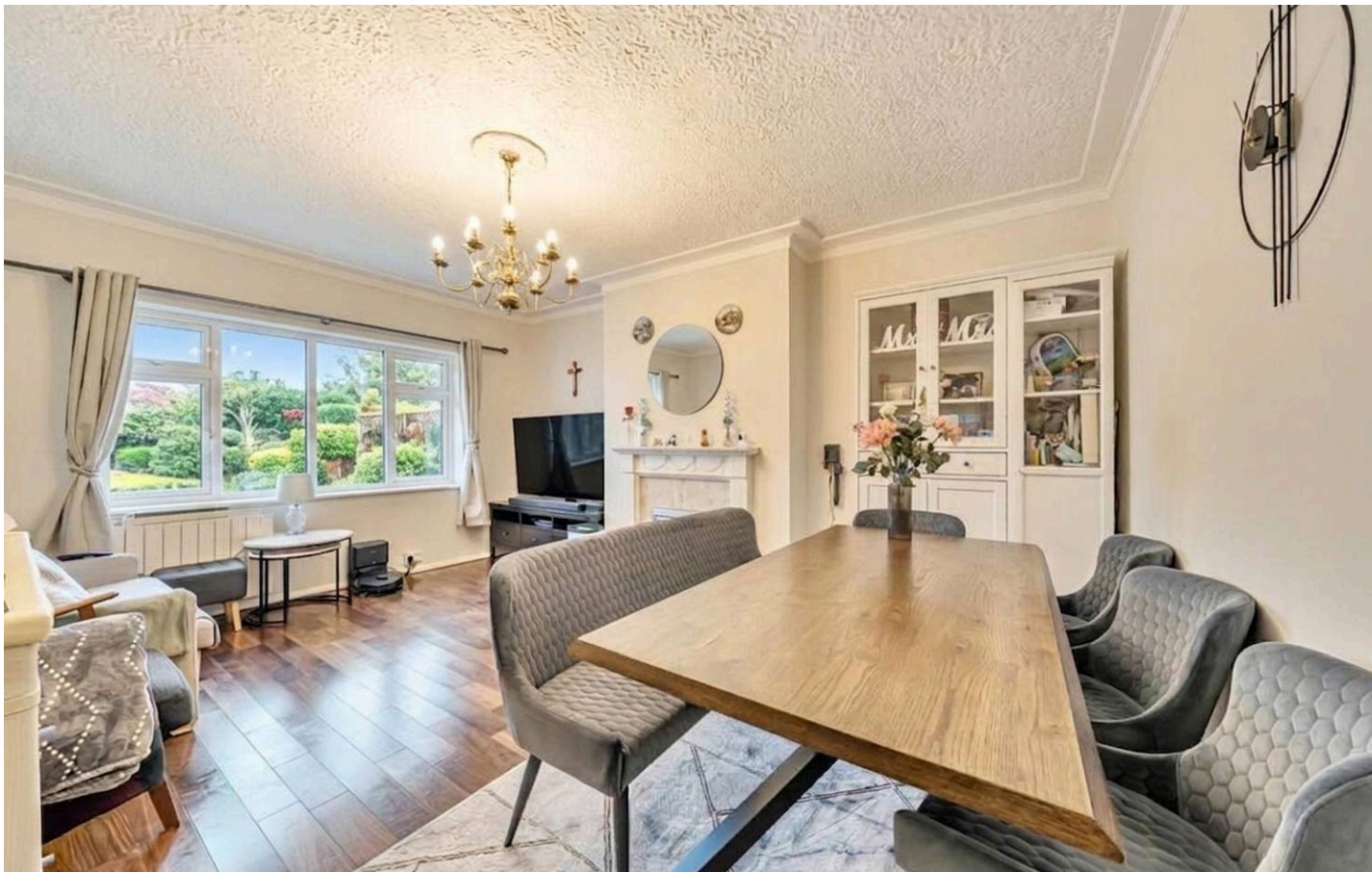


**Elm Park Court Elm Park Road, Pinner – HA5 3LL**

Guide Price £363,000 | Share Of Freehold



**LAWRENCE RAND**



## Key Features & Description

- Two Double Bedrooms
- Parking
- Share Of Freehold
- Communal Gardens
- Separate Large Reception Room

Situated within the highly sought-after **Elm Park Court** development in the heart of Pinner, this beautifully presented two double bedroom apartment offers a wonderful combination of character, space and convenience. Benefiting from a **share of the freehold**, this attractive home forms part of a charming Grade II listed Art Deco development, renowned for its well-maintained communal gardens and timeless architectural appeal. The apartment features a bright and spacious dual-aspect living room, creating a welcoming space for both relaxing and entertaining, with access to a private balcony overlooking the attractive communal grounds. The modern fitted kitchen is well-appointed with ample storage and workspace, while both double bedrooms are generously proportioned. A stylish family bathroom completes the accommodation.

Residents enjoy beautifully maintained communal gardens, resident parking and the peace of mind that comes with owning a share of the freehold. Ideally located just a short walk from Pinner High Street, the property is perfectly positioned to take advantage of an excellent selection of boutique shops, cafés, restaurants and supermarkets, as well as Pinner Metropolitan Line station, providing convenient access into Central London.

**Presented with care by Lawrence Rand – helping you find the place you'll love to call home.**





## Nearest Stations

Pinner Station – approx 0.6 miles

Northwood Hills Station approx – 0.8 miles

Hatch End station – approx 1.3 miles

## Verified Material Information:

Council Tax band: D

EPC Energy Efficiency Rating: E

Share Of Freehold

## Suppliers

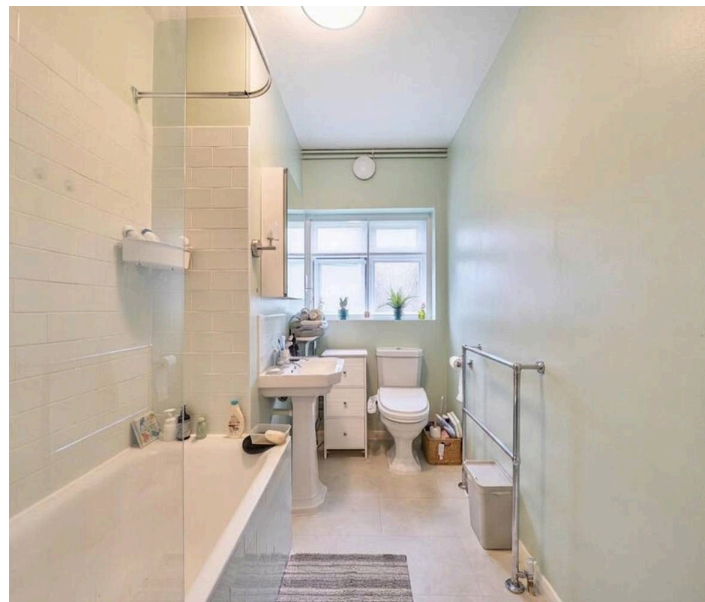
Electricity supply: Mains, Water supply: Mains  
water, Sewerage: Mains

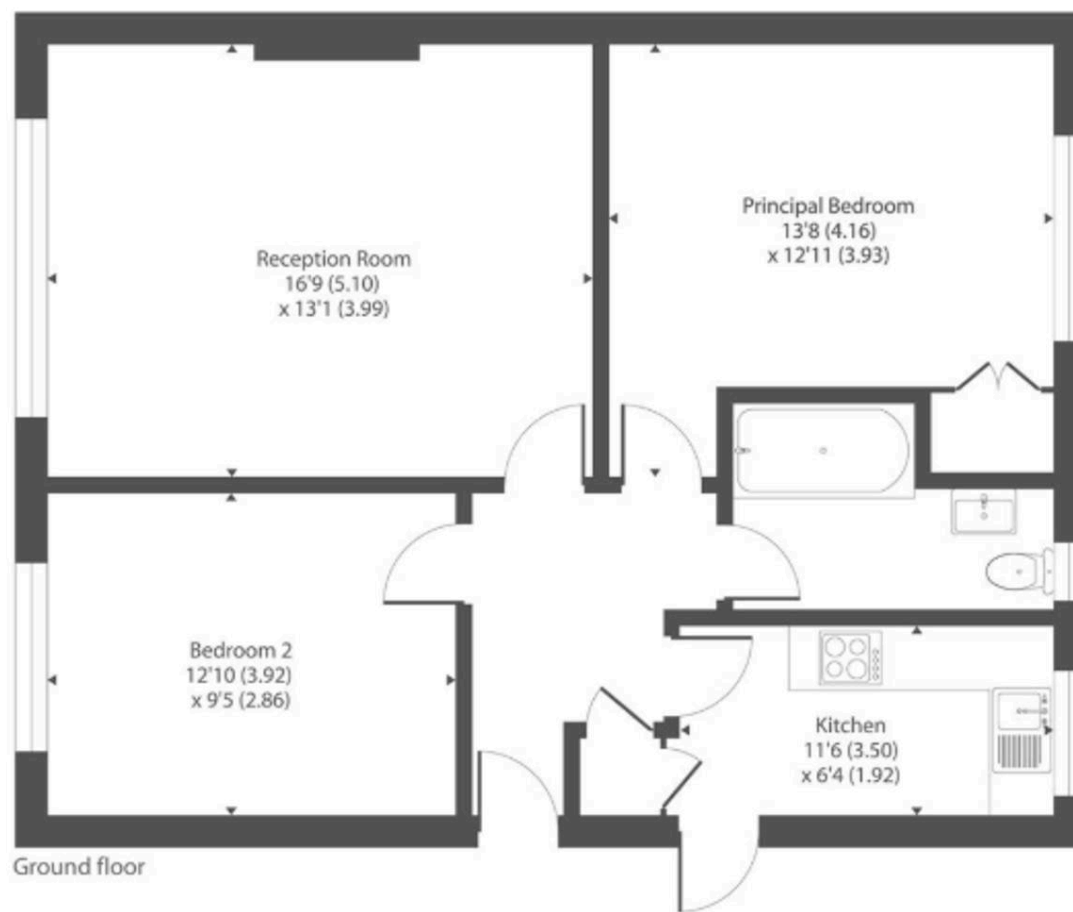
Heating: Electric

## Broadband & mobile coverage:

Broadband: FTTP (Fibre to the Premises)

Mobile coverage: O2 - Excellent, Vodafone -  
Excellent, Three - Excellent, EE - Excellent





## Lawrence Rand

51 Victoria Road, Ruislip - HA4 9BH

01895 632211

[sales@lawrence-rand.co.uk](mailto:sales@lawrence-rand.co.uk)

[www.lawrence-rand.co.uk/](http://www.lawrence-rand.co.uk/)

Lawrence Rand Limited has made every reasonable effort to ensure the accuracy of the information provided. However, we accept no responsibility for errors, omissions, or misstatements. All measurements, distances, and descriptions are approximate and for guidance only. Prospective purchasers or tenants must verify all details independently. Some images may include AI-generated virtual staging to illustrate the potential of the property and are for visual guidance only. No warranty is given or implied, and these particulars do not form part of any offer or contract. Lawrence Rand reserves the right to amend or withdraw any property without notice.