



Price
£550,000

Freehold

6x  2x  2x 

**Glossop Road, South
Croydon, Surrey, CR2**

OVER 60?

Secure this property
for up to **59% less!**

cubitt & west
Helping you move forwards

Accommodation

GROUND FLOOR

Entrance Hallway

Living Room: 14'0 x 12'6 (4.27m x 3.81m)

Dining Room: 13'7 x 10'6 (4.14m x 3.20m)

Kitchen: 12'1 x 11'0 (3.69m x 3.36m)

Bathroom

Utility Room: 9'11 x 6'7 (3.02m x 2.01m)

FIRST FLOOR

Landing

Bedroom 1: 14'1 x 10'9 (4.30m x 3.28m)

Bedroom 2: 11'6 x 10'6 (3.51m x 3.20m)

Bedroom 3: 11'4 x 8'2 (3.46m x 2.49m)

Bedroom 4: 8'0 x 5'5 (2.44m x 1.65m)

Shower Room

Separate Toilet

SECOND FLOOR

Landing

Bedroom 5: 16'4 x 7'5 (4.98m x 2.26m)

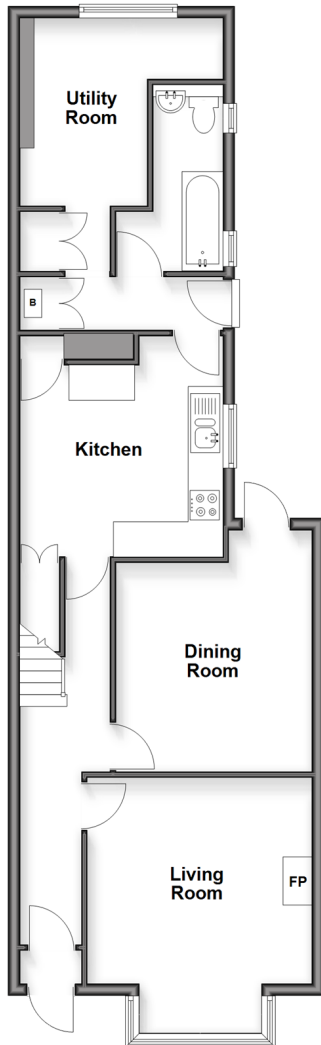
Bedroom 6: 10'7 x 8'6 (3.23m x 2.59m)

OUTSIDE

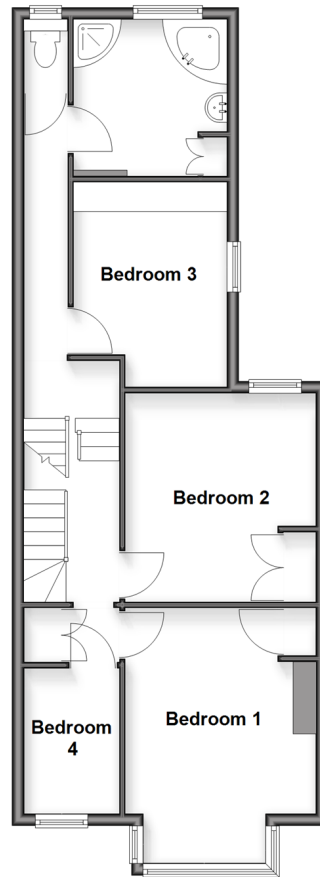
Rear Garden

Front Garden

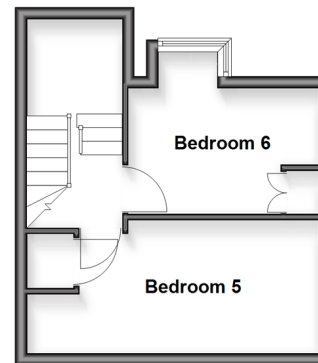
Ground Floor
Approx. 70.2 sq. metres (756.1 sq. feet)



First Floor
Approx. 59.4 sq. metres (639.2 sq. feet)



Second Floor
Approx. 25.0 sq. metres (269.0 sq. feet)





Main features

- Semi-detached house set over three floors in need of some updating
- 2 bathrooms, large utility room and lots of eaves storage
- Close to Purley Oaks and Sanderstead train stations - ideal if you commute
- Ideal home for a growing family with flexible accommodation
- Good size level rear garden



Nearest Schools

Primary Schools: Purley Oaks Primary 0.2 miles, Ridgeway Primary 0.5 miles, Regina Coeli Catholic Primary 0.7 miles
Secondary Schools: Haling Manor High School 0.6 miles, St Giles School 0.7 miles, Whitgift School 0.8 miles



Transport Information

Train Stations: Sanderstead 0.0 miles, Purley Oaks 0.2 miles, South Croydon 0.9 miles



Address

Glossop Road, South Croydon, Surrey, CR2



Directions

For directions to this property please contact us.



cubitt&west
Helping you move forwards

Call Purley Branch 020 8660 8882 ■ cubittandwest.co.uk



- Legal advice should be taken to verify fixtures/fittings, planning, alterations and/or lease details
- Appliances & services are untested, dimensions are approximate and floor plans are not to scale
- Through a Homewise Home For Life Plan people aged 60+ can secure this property for up to 59% less, by purchasing a Lifetime Lease

EPC RATING	CURRENT:	POTENTIAL:
	E(43)	C(75)

21511840/20260116/D1/KV