

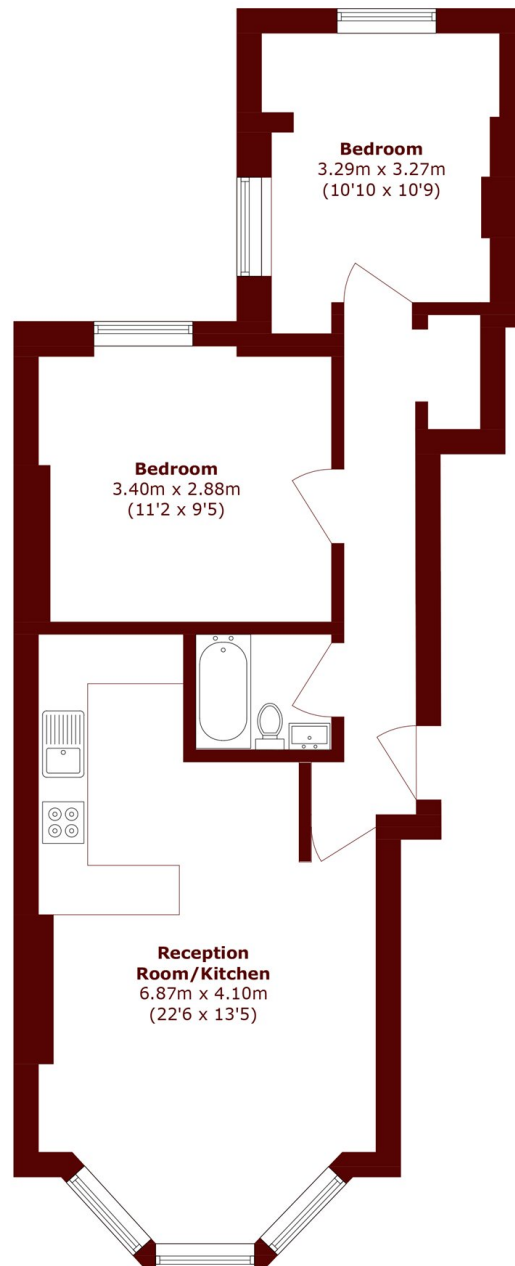


Sutherland Avenue, W9

£600,000



- Raised ground floor
- Two bedroom
- Period conversion
- Open plan kitchen/ living space
- Close to amenities
- Approx. 613 sq ft



Raised Ground Floor

Total area (approx.): 57.0 sq. m (613.5 sq. ft)

Marsh & Parsons Little Venice

35 Maida Vale, Maida Vale,
W9 1TP
020 7993 3050