

Old Oak Common Lane, W3

£500,000

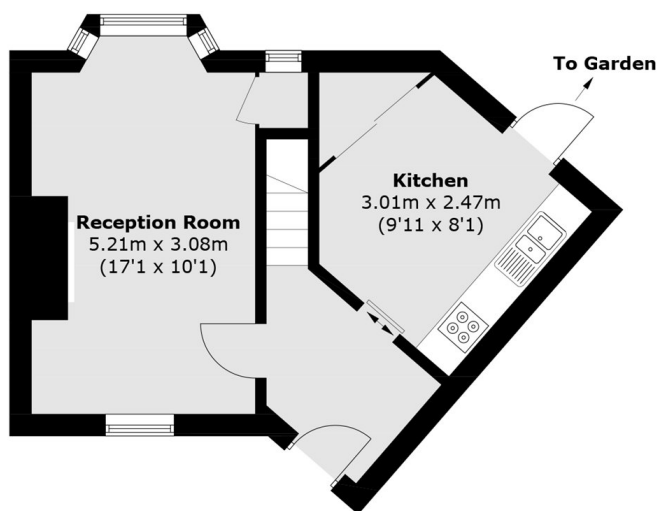
A two-bedroom home, set back from the road. The property features a separate kitchen and living room, two bedrooms, and a larger-than-average private garden. The home would benefit from updating, offering an excellent opportunity to add value and make it your own, ideal for family living.

Old Oak is ideally located close to the shops, cafés and restaurants of Shepherd's Bush, including Westfield Shopping Centre, with excellent transport links via the Central, Hammersmith & City and Circle lines. Hammersmith Hospital, Notting Hill, and local parks are also just a short walk away.

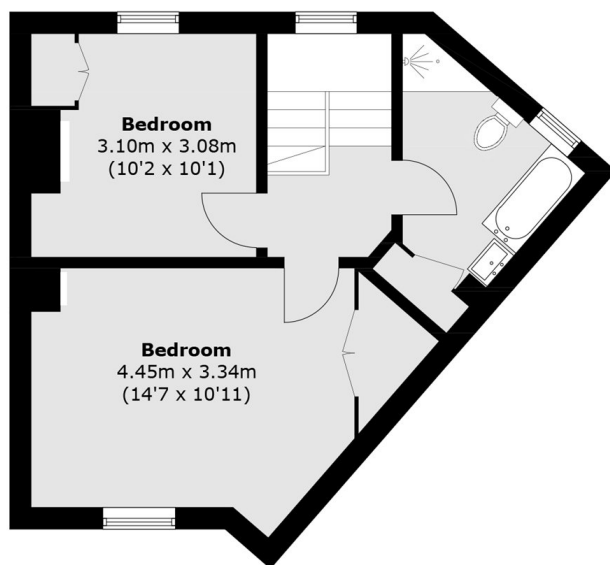
Features

- Freehold House
- Two Double Bedrooms
- No Onward Chain
- Private Garden
- Front Communal Garden
- Westfields Shopping Centre

Old Oak Common Lane, London, W3



Ground Floor



First Floor

Total area (approx.): 71.3 sq. m (767.5 sq. ft)