



Connells

Dangerfield Lane
Wednesbury



Property Description

Connells Estate Agents in Wednesbury are delighted to present this well-maintained three-bedroom semi-detached property located in Darlaston. This attractive home is move-in ready and ideal for first-time buyers or growing families.

The ground floor features a spacious through lounge, offering flexible living space that can easily accommodate both lounge and dining areas. The kitchen provides ample room for appliances and includes plumbing for utilities, alongside the added convenience of a downstairs WC.

Upstairs, the property boasts three generously sized bedrooms and a modern, fully tiled family bathroom finished to a high standard.

Externally, the home benefits from off-road parking to the front and a well-proportioned rear garden, complete with side access.

Situated in a convenient location, the property is within walking distance of local schools and excellent transport links, with a wide range of major retailers and independent shops nearby.

Ground Floor

Hallway

Having a double glazed entrance door, a double glazed window to the front aspect, vinyl flooring, ceiling light point, doors to the lounge and kitchen and stairs leading to the first floor.

Lounge

17' 9" Max x 9' 10" Max (5.41m Max x 3.00m Max)

Having a double glazed window to the front aspect, carpeted flooring, ceiling light point, radiator and double glazed sliding doors to the rear garden.

Kitchen

11' 10" x 10' 10" (3.61m x 3.30m)

Being a fully fitted kitchen with a range of wall, base and drawer units with laminate worktops over. Having a double glazed window to the side aspect, tiled splash backs, vinyl flooring, sink with drainer, space for appliances, radiator, storage cupboard, plumbing for a washing machine, ceiling light point and door leading to the rear lobby.

Rear Lobby

Having double glazed door to the rear garden and door leading to the WC.

First Floor

Landing

Having a double glazed window to the front aspect, carpeted flooring, ceiling light point and doors leading to the bedrooms and bathroom.

Bedroom One

12' 2" x 7' 10" (3.71m x 2.39m)

Having a double glazed window to the rear aspect, carpeted flooring, ceiling light point and a radiator.

Bedroom Two

11' 10" x 8' 6" (3.61m x 2.59m)

Having double glazed windows to the rear and side aspects, carpeted flooring, ceiling light point and a radiator.

Bedroom Three

8' 8" x 9' 1" (2.64m x 2.77m)

Having a double glazed window to the front aspect, carpeted flooring, ceiling light point, radiator and a storage cupboard.

Bathroom

Having a double glazed window to the front aspect, fully tiled walls and flooring, a bath with shower over, wash hand basin with vanity, WC, ceiling light point and a radiator.

Outside

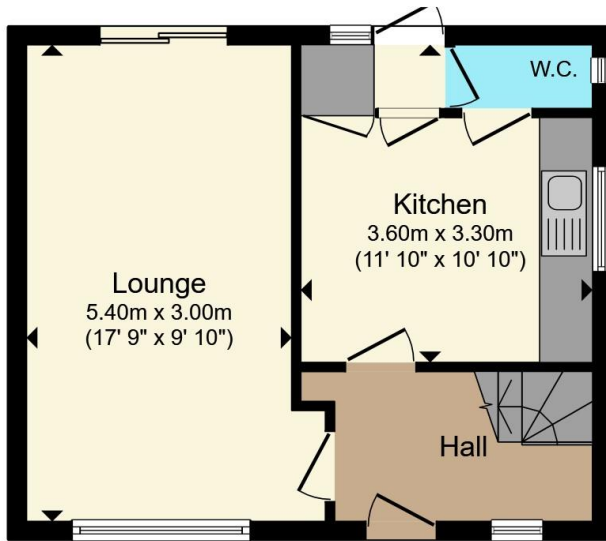
Front:

Having off road parking and a lawn.

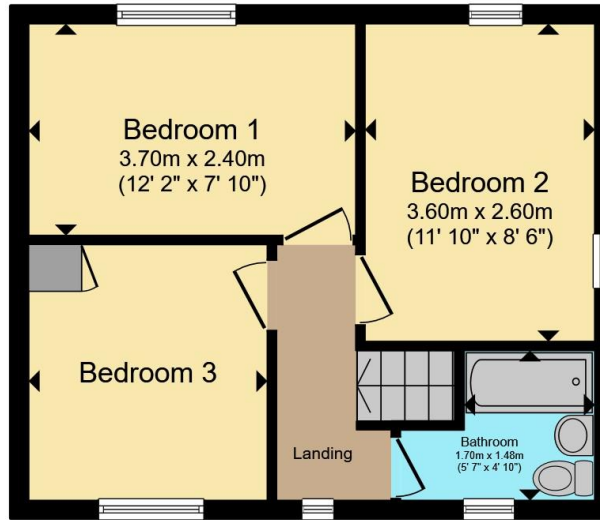
Rear:

Having a patio, lawn and side access to the front of the property.





Ground Floor



First Floor



Total floor area 69.1 m² (744 sq.ft.) approx

This floor plan is for illustrative purposes only. It is not drawn to scale. Any measurements, floor areas (including any total floor area), openings and orientation are approximate. No details are guaranteed, they cannot be relied upon for any purpose and they do not form part of any agreement. No liability is taken for any error, omission or misstatement. A party must rely upon its own inspection(s). Powered by www.propertybox.io



To view this property please contact Connells on

T 0121 556 2338
E wednesbury@connells.co.uk

22 Spring Head
 WEDNESBURY WS10 9AD

EPC Rating: C Council Tax
 Band: A

Tenure: Freehold

view this property online connells.co.uk/Property/WED312211



1. MONEY LAUNDERING REGULATIONS Intending purchasers will be asked to produce identification documentation at a later stage and we would ask for your co-operation in order that there will be no delay in agreeing the sale. 2. These particulars do not constitute part or all of an offer or contract. 3. The measurements indicated are supplied for guidance only and as such must be considered incorrect. Potential buyers are advised to recheck measurements before committing to any expense. 4. We have not tested any apparatus, equipment, fixtures, fittings or services and it is in the buyers interest to check the working condition of any appliances.

Connells Residential is registered in England and Wales under company number 1489613, Registered Office is Cumbria House, 16-20 Hockliffe Street, Leighton Buzzard, Bedfordshire, LU7 1GN. VAT Registration Number is 500 2481 05.

See all our properties at www.connells.co.uk | www.rightmove.co.uk | www.zoopla.co.uk

Property Ref: WED312211 - 0005