



Guide Price
£375,000

Leasehold

1x  1x  1x 

**Morieux Road, Leyton,
E10**

 **DOUGLAS
ALLEN**
Helping you move forwards



Main features

- Spacious double bedroom
- Bright and airy first-floor position
- Large lounge with ample natural light
- Modern fitted kitchen and bathroom
- Excellent condition throughout
- Fantastic location close to amenities and transport links

Accommodation

FIRST FLOOR

Lounge/Diner: 17'3 x 11'3 (5.26m x 3.43m)

Kitchen: 10'4 x 9'6 (3.15m x 2.90m)

Bedroom: 11'2 x 10'1 (3.41m x 3.08m)

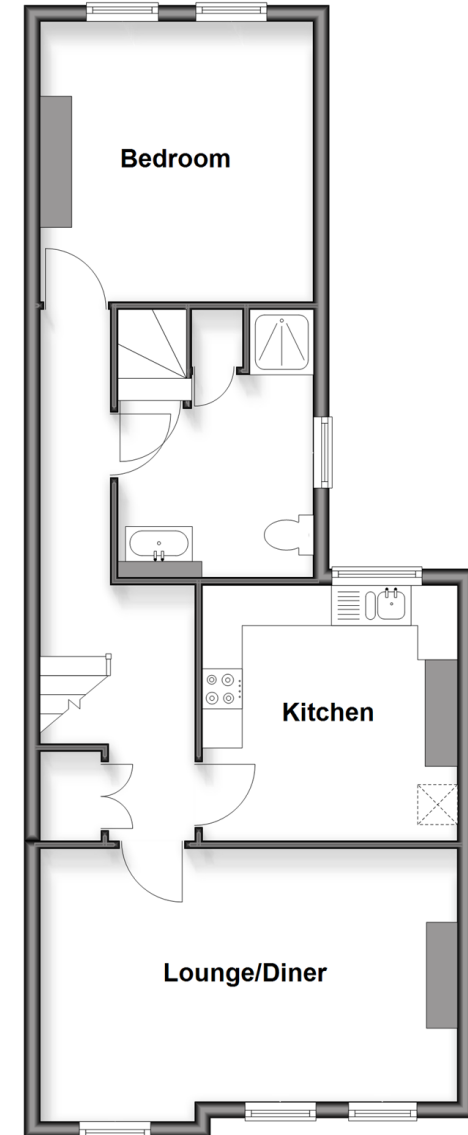
Bathroom

OUTSIDE

Rear Garden

First Floor

Approx. 58.9 sq. metres (633.6 sq. feet)



Call Walthamstow - 020 8509 0092 ■ douglasallen.co.uk

- A private rental licensing scheme applies to some properties in this area, please contact us before proceeding
- Legal advice should be taken to verify fixtures/fittings, planning, alterations and/or lease details
- Appliances & services are untested, dimensions are approximate and floor plans are not to scale



53117998/20250823/KS/SC