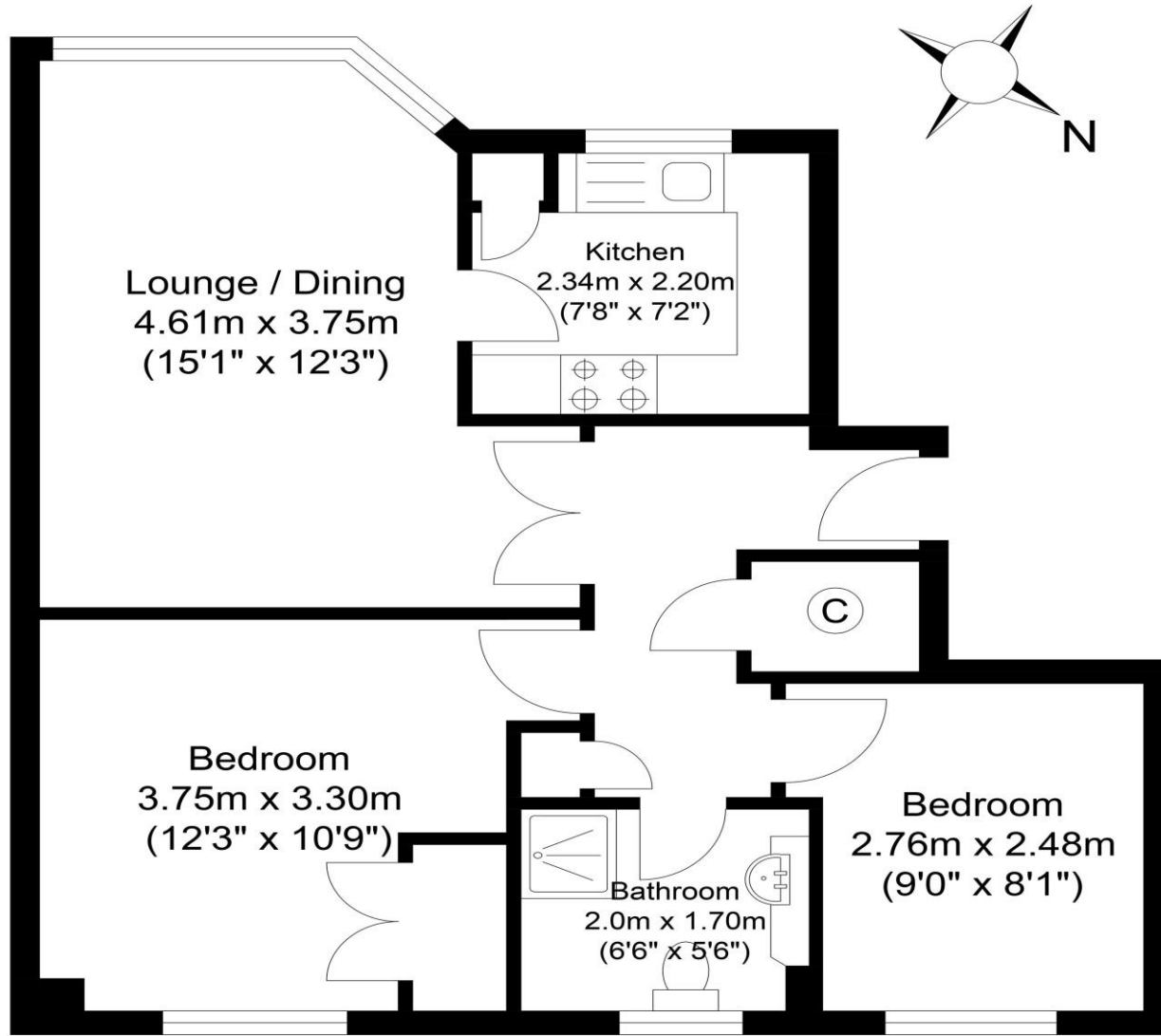


The Floorplan...



Approx Gross Internal Floor Area : 48.47 sq m. (521.72 sq. ft.)
Garden Measurement - (22.90m x 7.55m = 75'1" x 24'9")



First Floor

More Details From...

Call: **Brian Cox North Harrow: 020 3866 6640**

Email: nhadmin@brian-cox.co.uk

Web: www.brian-cox.co.uk



BRIAN COX
ESTATE AGENTS



BRIAN COX
ESTATE AGENTS

0203 866 6640
brian-cox.co.uk



Step into comfort and convenience with this spacious two-bedroom first-floor flat, now available through Brian Cox Estate Agents. Perfectly positioned, this delightful property is just a stone's throw away from local shopping hubs, highly sought-after schools, and excellent transport links, making it ideal for modern living. The accommodation boasts an inviting entrance hallway, a generously sized lounge/diner perfect for both relaxation and entertaining, and a fully equipped kitchen ready to inspire your culinary creations. Both bedrooms offer ample space, providing a peaceful retreat, while the stylish bathroom adds a touch of elegance. Additional perks include gas central heating, double glazing, off-street parking, and your very own section of garden to enjoy. Don't miss out on the opportunity to make this charming flat your new home!



Monthly Rental Of £1,650

Canterbury Road, North Harrow HA1

4PD



In Brief...

- Available 1st Week of June 2026
- First Floor Flat
- Two Bedrooms
- Off Street Parking
- Own Section of Garden
- Close to Shops and Met Line
- Well Presented Accommodation



The Location...

Nearest Stations ...

North Harrow (0.3 miles) West Harrow (0.6 miles) Harrow & Wealdstone (0.7 miles) North Harrow is a suburban area of North West London, situated North West of Central Harrow within the London Borough of Harrow. North Harrow Train Station is a London Underground Station situated in North Harrow in North West London. The station is on the Metropolitan Line between Harrow-on-the-Hill (southbound) and Pinner (northbound). The area is served well by local amenities including a post office, Tesco Express, a selection of restaurants, take-aways & cafés and independent specialist shops. There are several schools in the area and churches.

