



1 Springwood Gardens, Woodthorpe – NG5 4HB

Guide Price £500,000

DavidJames
the estate agent



1 Springwood Gardens

Woodthorpe, Nottingham

GUIDE PRICE £500,000 – £525,000 Stunning chalet-style detached home on the highly sought-after Springwood Gardens! Offering 4 double beds (all en-suite), generous living space and multi-car parking!

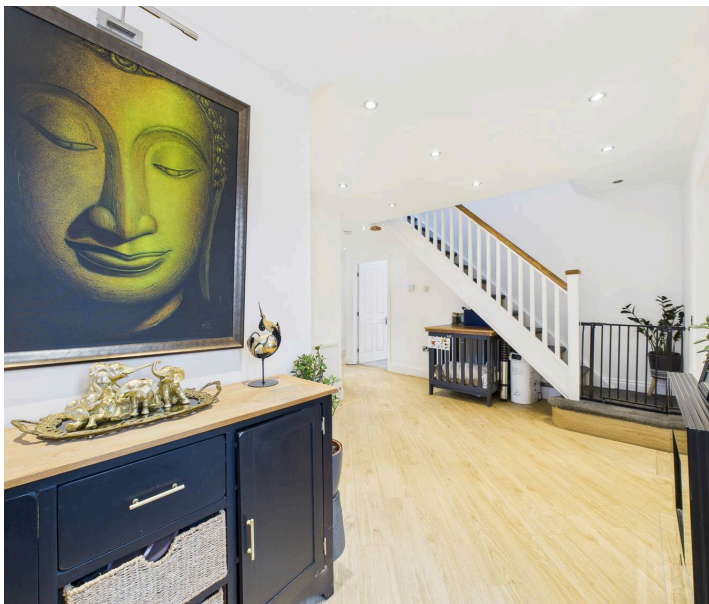
Council Tax band: C

Tenure: Freehold

EPC Energy Efficiency Rating: C

EPC Environmental Impact Rating:

- Beautifully presented chalet-style detached home
- Ideal for a variety of buyers and in a highly sought-after location close to Mapperley's excellent amenities
- High-quality finishes throughout showcasing thoughtful upgrades and cohesive interior styling
- Inviting entrance hall with a convenient cloakroom/WC
- Spacious and welcoming lounge with a stunning and light-filled adjoining conservatory/dining area
- Contemporary fitted kitchen with sleek cabinetry and quality integrated appliances
- Four double bedrooms (each with the luxury of an en-suite)
- First floor bedrooms feature vaulted ceilings and convenient fitted wardrobes
- Corner plot provides low-maintenance gardens with decking, patio space and a summer house
- Gated driveway and detached garage offering secure and generous off-road parking for multiple vehicles









Floor 0



Floor 1

Approximate total area⁽¹⁾

164.5 m²

1772 ft²

Reduced headroom

4.5 m²

48 ft²

(1) Excluding balconies and terraces

Reduced headroom

Below 1.5 m/5 ft

Calculations reference the RICS IPMS 3C standard. Measurements are approximate and not to scale. This floor plan is intended for illustration only.

GIRAFFE360



David James Estate Agents

David James Estate Agents, 45B Plains Road – NG3 5JU

0115 962 4213 • mapperley@david-james.com • www.david-james.com

These particulars are produced in good faith and are set out as a general guide only. Measurements are approximate and floor plans are for illustrative purposes only. Services have not been tested. We have established professional relationships with third-party suppliers for the provision of services to Clients, details of which can be found on the property listing page on our website.