



Barrier Point Road

London, E16

Asking Price £450,000

A stunning two bedroom, two bathroom apartment in the Barrier Point Road development with a private, East Facing balcony, with views over the River Thames. The property benefits from a parking space, residents gym and concierge services.

CHESTERTONS



Barrier Point Road

London, E16

- Two Bedrooms | Two Bathrooms
- Approx. 812 sqft
- Allocated Private Parking Space
- Private East-Facing Balcony
- Thames River views
- 24/7 concierge
- Close proximity to amenities of Royal Wharf
- Close to Pontoon Dock DLR (0.2m)



Set in an exclusive 'deco-style' development with uninterrupted views over Barrier Park and the Thames Barrier this 2nd floor apartment is presented in excellent condition through-out. Featuring two good-sized double bedrooms with two bathrooms, this property will appeal to those seeking space and light.

Residents benefit from 24/7 concierge, a private parking space (the apartment has further permits for parking in the development) and gym.

Barrier Point is ideally situated within easy reach of Pontoon Dock DLR station providing direct links to London City Airport, Canary Wharf and Central London. Thames Barrier Park and the Riverscape Development are next door to the development providing a range of amenities.

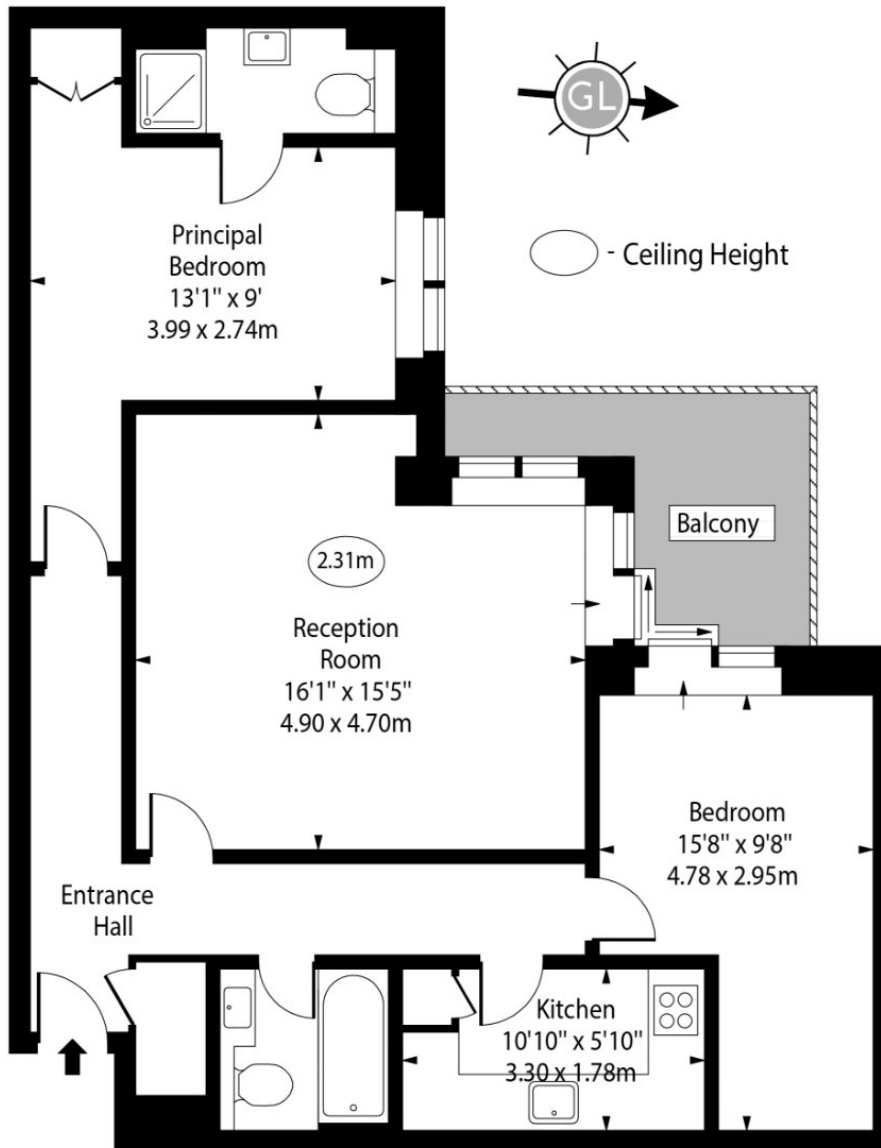
Tenure: Leasehold - 971 years approx. remaining.
Service Charge: £5,385 pa. approx.
Ground Rent: £435 pa. Subject to review on each 21st anniversary of the Lease date.
Local Authority: London Borough Of Newham
Council Tax Band: D

Score	Energy rating	Current	Potential
92+	A		
81-91	B	82 B	82 B
69-80	C		
55-68	D		
39-54	E		
21-38	F		
1-20	G		

Chestertons Canary Wharf & Greenwich Sales

Harbour Island
 28 Harbour Exchange Square
 London
 E14 9GE
 canarywharf@chestertons.co.uk
 020 7510 8300
 chestertons.co.uk

Barrier Point Road, E16



Second Floor

Approx Gross Internal Area 812 Sq Ft - 75.43 Sq M

Every attempt has been made to ensure the accuracy of the floor plan shown. However, all measurements, fixtures, fittings, and data shown are approximate interpretations and for illustrative purposes only. Measured according to the RICS. Not To Scale.

www.goldlens.co.uk

Ref. No. 030494E

