



NEWBY CLOSE

ILKLEY, LS29 6QT

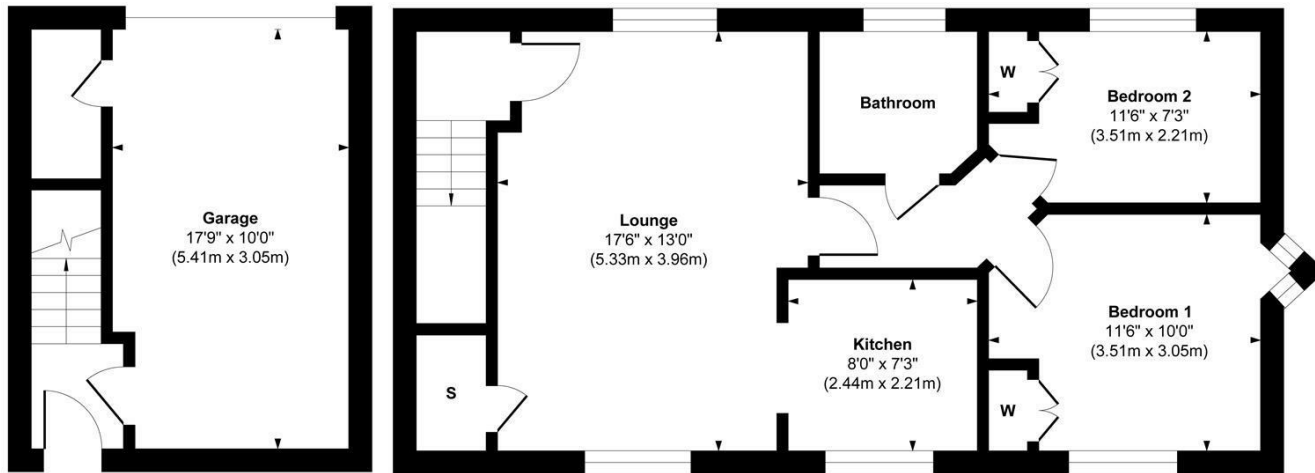
£199,999
LEASEHOLD

Monroe is thrilled to present this stylish two-bedroom apartment in the heart of Menston. A standout opportunity for first-time buyers, this turnkey home is unique for its integral garage, a rare find for the area. Combining village charm with modern convenience, it's perfectly move-in ready. Just drop your bags and start living.

MONROE

SELLERS OF THE FINEST HOMES

Newby Close, Menston



Ground Floor
 Approximate Floor Area
 238 sq. ft
 (22.18 sq. m)

First Floor
 Approximate Floor Area
 636 sq. ft
 (59.13 sq. m)

Approx. Gross Internal Floor Area 874 sq. ft / 81.31 sq. m

Illustration for identification purposes only, measurements are approximate, not to scale.
 Copyright © Show Home.



Energy Efficiency Rating		
	Current	Potential
Very energy efficient - lower running costs		
(92 plus) A		
(81-91) B		
(69-80) C	74	74
(55-68) D		
(39-54) E		
(21-38) F		
(1-20) G		
Not energy efficient - higher running costs		
England & Wales	EU Directive 2002/91/EC	

Agents Note: Whilst every care has been taken to prepare these particulars, they are for guidance purposes only. All measurements are approximate and are for general guidance purposes only and whilst every care has been taken to ensure their accuracy, they should not be relied upon and potential buyers/tenants are advised to recheck the measurements

Guiseley Sales
 3a Oxford Road
 Guiseley
 Leeds
 LS20 9AS

james@monroestateagents.com
 monroestateagents.com

MONROE

SELLERS OF THE FINEST HOMES