



ST. GEORGES GROVE, SW17

£2,400 PCM

- Modern Apartment
- Two Bathrooms
- Two Double Bedrooms
- Allocated Parking





ABOUT THE HOME

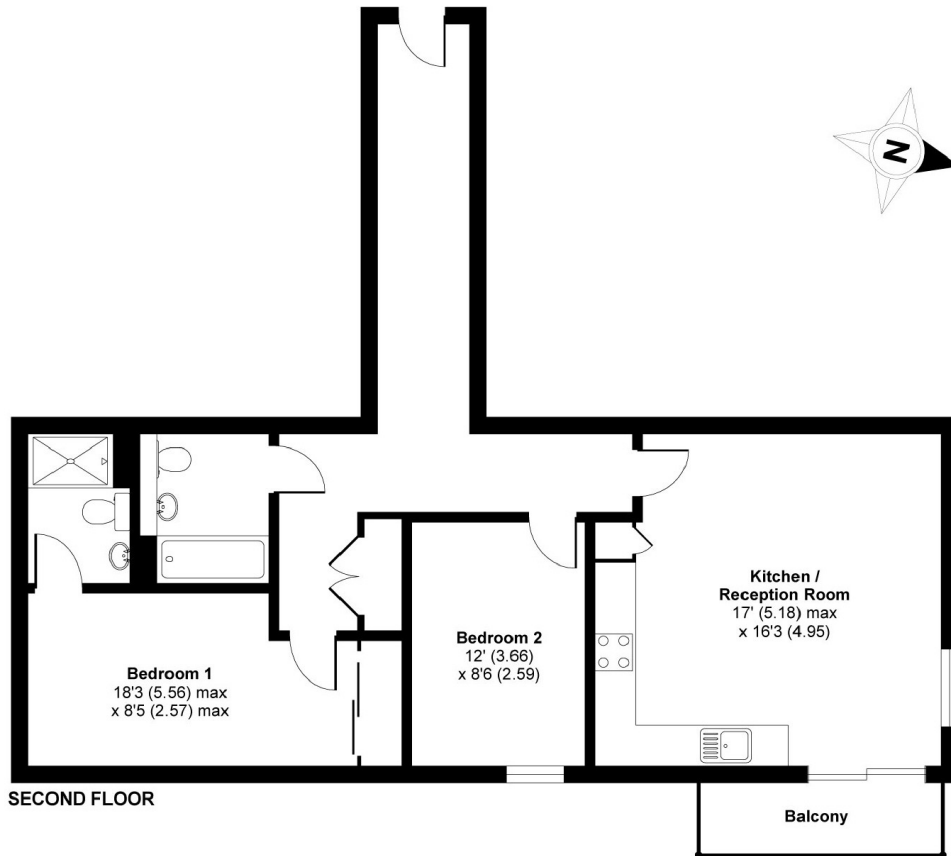
A two double bedroom modern apartment with private balcony and an allocated parking space within one of Earlsfield's most popular developments.

Comprising a spacious open plan living area with modern fitted kitchen and doors leading to a private terrace which offers beautiful views over the golf course, two genuine double bedrooms, two modern bathroom suites.

St Georges Grove is located within walking distance of Earlsfield Station as well as the local amenities of Garratt Lane. The development further benefits from allocated parking, beautifully kept communal gardens and on site shopping facilities.







APPROX. GROSS INTERNAL FLOOR AREA 823 SQ FT 76.4 SQ METRES

Fleming House, St. Georges Grove, Earlsfield, SW17

Copyright nichecom.co.uk 2017 Produced for Jacksons the Independent Estate Agents REF : 213209

JACKSONS EARLSFIELD

372-374 Garratt Lane,
Earlsfield, London, SW18 4ES
Sales: 020 8971 7979
Lettings: 020 8971 7070

Energy Rating: Wandsworth Borough Council We aim to make our particulars both accurate and reliable. However they are not guaranteed; nor do they form part of an offer or contract. If you require clarification on any points then please contact us, especially if you're traveling some distance to view. Please note that appliances and heating systems have not been tested and therefore no warranties can be given as to their good working order.