



## ELVASTON PLACE, SW7

£650,000

Golden triangle  
Roof terrace  
Penthouse  
Very bright  
Two bedrooms  
Energy rating d

@marshandparsons  
marshandparsons.co.uk

MARSH &  
PARSONS



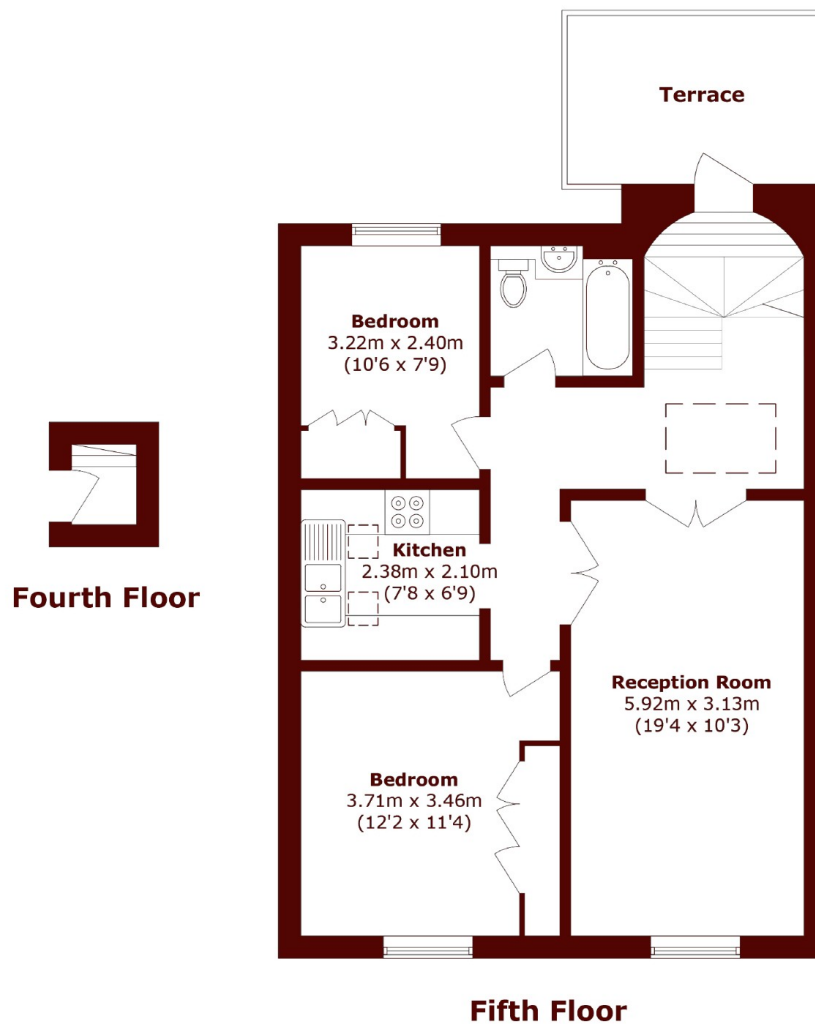
# ABOUT THE PROPERTY

A two bedroom penthouse apartment in the golden triangle, with a private roof terrace, moments from Hyde Park. Set within a classic period building on one of South Kensington's most desirable streets, this beautifully presented two-bedroom apartment offers a perfect blend of traditional charm and modern living. Located on Elvaston Place, the property enjoys a prime position moments from Hyde Park, Gloucester Road, and the cultural heart of Kensington.

The property is equidistant between Gloucester Road and South Kensington Stations, which are serviced by the District, Circle and Piccadilly lines.



# STEP INSIDE ELVASTON PLACE



Total area (approx.): 63.9 sq. m (687.8 sq. ft)

Terrace area (approx.): 7.7 sq. m (82.8 sq. ft)

South Kensington  
020 7590 0800

Energy Rating: D We aim to make our particulars both accurate and reliable. However, they are not guaranteed; nor do they form part of an offer or contract. If you require clarification on any points then please contact us, especially if you're traveling some distance to view. Please note that appliances and heating systems have not been tested and therefore no warranties can be given as to their good working order

MARSH &  
PARSONS