



Guide Price
£650,000

Freehold

4x  2x  3x 

**Willingdon Place,
Walmer, Deal, Kent,
CT14**

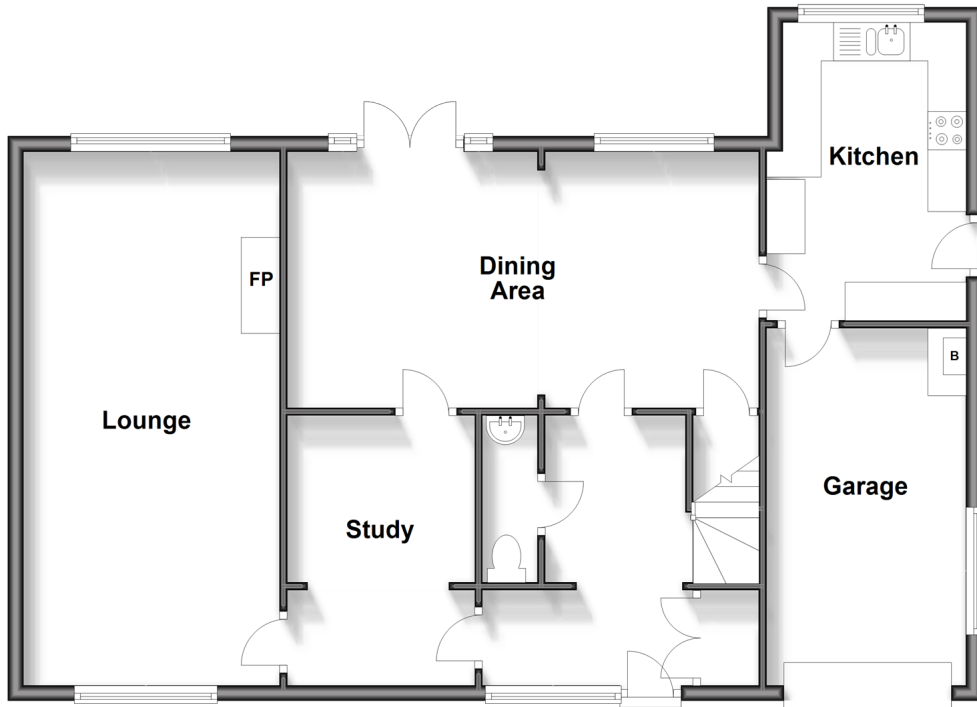
OVER 60?

Secure this property
for up to **59% less!**

Wards
Helping you move forwards

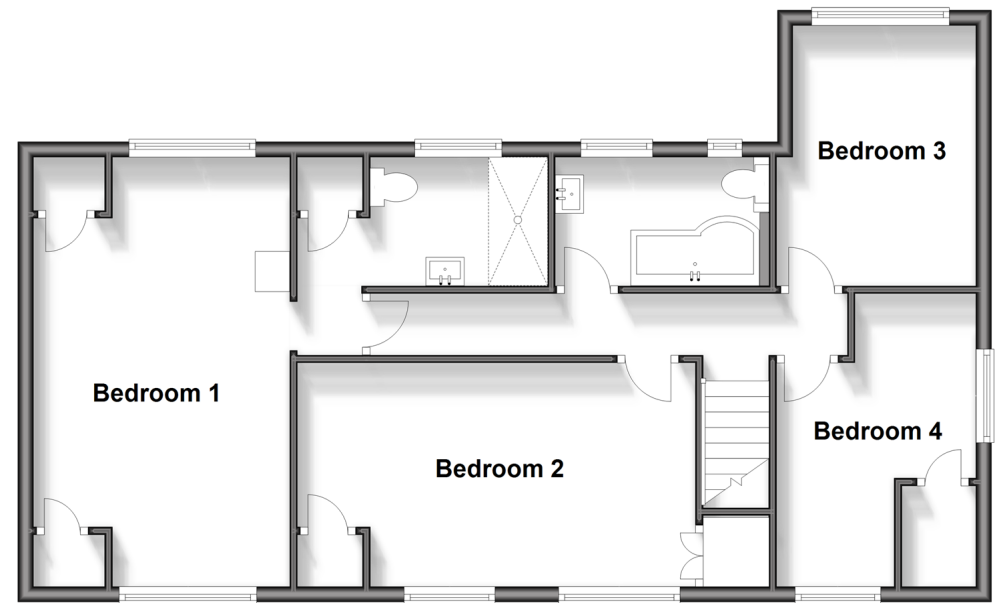
Ground Floor

Approx. 89.7 sq. metres (965.3 sq. feet)



First Floor

Approx. 73.0 sq. metres (785.7 sq. feet)



Accommodation

GROUND FLOOR

Entrance Hallway

Lounge : 23'11 x 10'11 (7.29m x 3.33m)

Dining Area: 20'8 x 10'2 (6.30m x 3.10m)

Study : 12'2 x 8'2 (3.71m x 2.49m)

Kitchen : 12'7 x 8'6 (3.84m x 2.59m)

Cloakroom

FIRST FLOOR

Landing

Bedroom 1: 18'6 x 11'0 (5.64m x 3.36m)

En-Suite Shower Room

Bathroom

Bedroom 2: 17'5 x 9'3 (5.31m x 2.82m)

Bedroom 3: 10'5 x 8'7 (3.18m x 2.62m)

Bedroom 4: 9'7 x 8'8 (2.92m x 2.64m)

OUTSIDE

Front and Rear Gardens

Driveway and Integral Garage



Main features

- Highly sought after cul-de-sac location minutes from the sea
- Driveway parking and integral garage
- Large sunny aspect rear garden with sandstone patio
- Flexible accommodation with spacious reception rooms
- Modern bathroom and en-suite shower room both with under floor heating



Nearest Schools

Primary Schools: The Downs C of E Primary 0.3 miles, Deal Parochial C of E Primary 0.6 miles, St Mary's Catholic Primary 1.0 miles

Secondary Schools: Goodwin Academy 0.3 miles,



Transport Information

Train Stations: Walmer 0.6 miles, Deal 1.2 miles, Martin Mill 3.1 miles



Address

Willingdon Place, Walmer, Deal, Kent, CT14



Directions

For directions to this property please contact us.



Wards
Helping you move forwards

Call Deal Branch 01304 361420 ■ wardsofkent.co.uk



- Legal advice should be taken to verify fixtures/fittings, planning, alterations and/or lease details
- Appliances & services are untested, dimensions are approximate and floor plans are not to scale
- Through a Homewise Home For Life Plan people aged 60+ can secure this property for up to 50% less, by purchasing a Lifetime Lease

EPC RATING

CURRENT: D(64) POTENTIAL: C(80)

10635209/20250927/WSM/LB1