
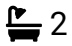



Peartree Close, Shefford, SG17 5JG

Guide Price £540,000

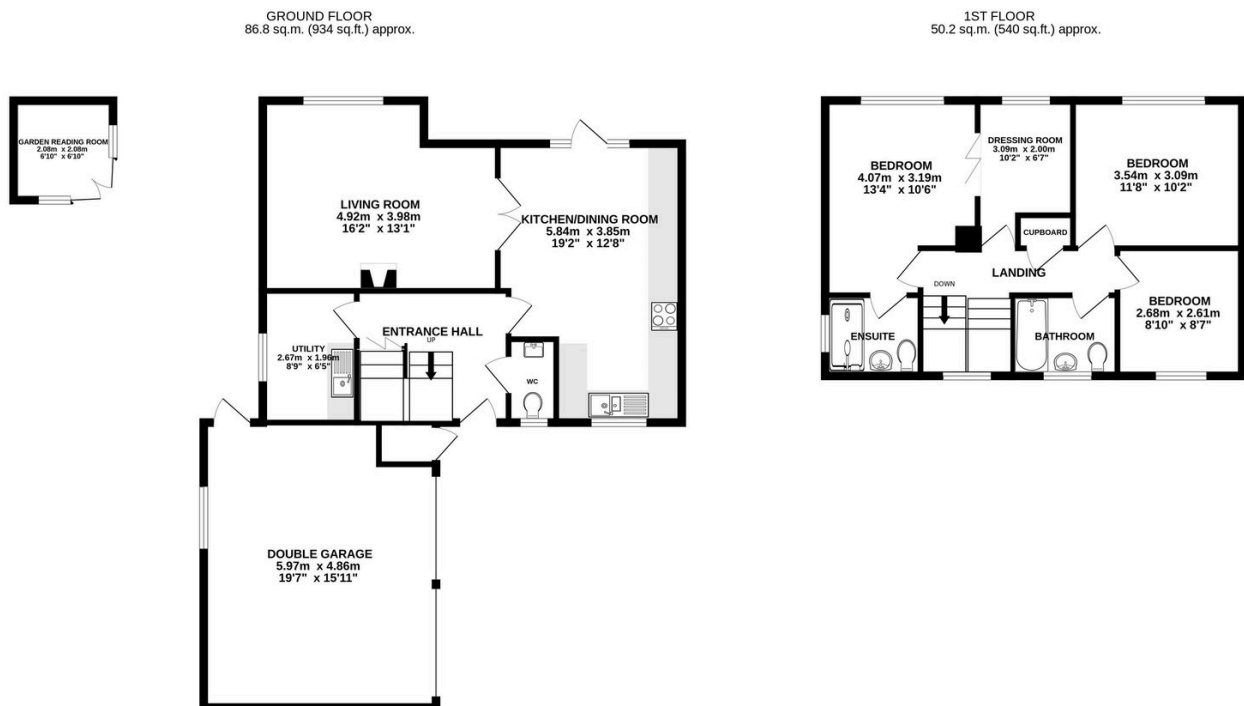
 4  2  2



A beautifully presented four-bedroom detached family home, offering spacious and versatile accommodation throughout, perfectly suited to modern family living.

Key Features

- Must see video tour
- Open-plan kitchen/dining room
- Bedroom three currently used as dressing room (easily converted back)
- Family bathroom and downstairs cloakroom
- Double garage and driveway parking
- Four-bedroom detached family home
- Quiet sought after cul-de-sac location
- En-suite to principal bedroom
- Private rear garden
- Sought-after Shefford location with excellent amenities



TOTAL FLOOR AREA: 137.0 sq.m. (1474 sq.ft.) approx.

Whilst every attempt has been made to ensure the accuracy of the floorplan contained here, measurements of doors, windows, rooms and any other items are approximate and no responsibility is taken for any error, omission or mis-statement. This plan is for illustrative purposes only and should be used as such by any prospective purchaser. The services, systems and appliances shown have not been tested and no guarantee as to their operability or efficiency can be given.

Made with Metropix ©2025