

**1 Bed  
Apartment  
located in 44 Whitworth Street**

**AiHOMES.**

# MNS404055LT, 44 Whitworth Street, Manchester



## £1,580 Per Month

Welcome to this charming one-bedroom apartment located at 44 Whitworth Street in the vibrant city of Manchester. This delightful property offers a comfortable living space, perfect for individuals or couples seeking a modern urban lifestyle.

Spanning an area of 549 square feet, the apartment is designed to maximise space and light, creating a warm and inviting atmosphere. The well-appointed bedroom provides a peaceful retreat, while the bathroom is equipped with essential amenities for your convenience.

Situated in a prime location, this apartment places you at the heart of Manchester's bustling scene, with an array of shops, restaurants, and cultural attractions just a stone's throw away. Whether you are looking to explore the city's rich history or enjoy its lively nightlife, you will find everything you need within easy reach.

This property is an excellent opportunity for those looking to embrace city living in a stylish and comfortable environment. Don't miss the chance to make this apartment your new home in Manchester.

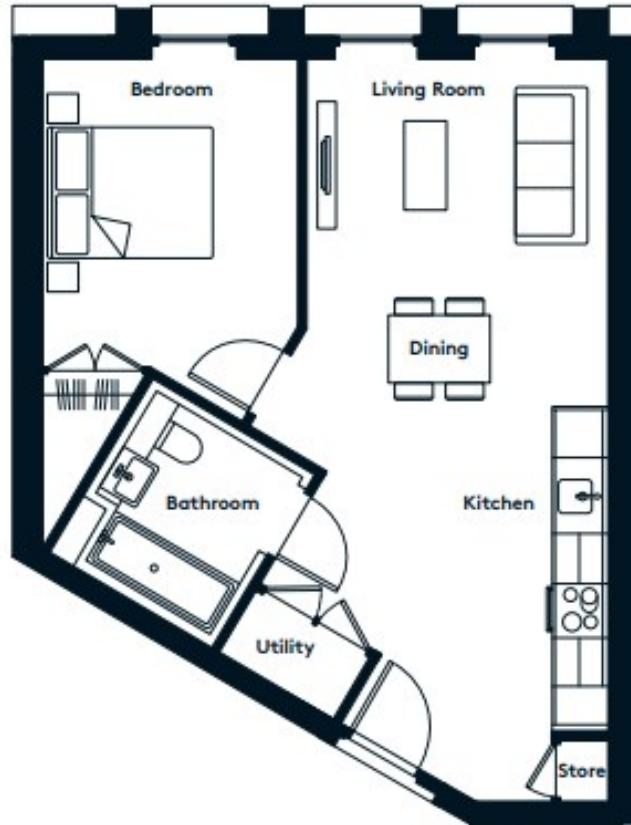







MNS404055LT, 44 Whitworth Street, Manchester





Energy Efficiency Rating		
	Current	Potential
<i>Very energy efficient - lower running costs</i>		
(92 plus) <b>A</b>		
(81-91) <b>B</b>		
(69-80) <b>C</b>		
(55-68) <b>D</b>		
(39-54) <b>E</b>		
(21-38) <b>F</b>		
(1-20) <b>G</b>		
<i>Not energy efficient - higher running costs</i>		
<b>England &amp; Wales</b>	EU Directive 2002/91/EC	

**EPC Rating:**  
**Council Tax Band: D**

**CONTACT**

5th floor, Empress Business Center  
380 Chester Road  
Manchester  
M16 9EA

E: [info@aihomes.uk](mailto:info@aihomes.uk)

T: 0127 332 8069

**AiHOMES.**