



OVER 60?

Secure this property
for up to **59% less!**

Price

£400,000

Freehold

2x  1x  1x 

**Aldington Close,
Dagenham, Essex, RM8**

 **DOUGLAS
ALLEN**
Helping you move forwards



Main features

- Well presented end of terrace house
- Off street parking & garage
- Low maintenance rear garden
- Spacious Sun Room
- First floor bathroom
- Walking distance to Chadwell Heath station/Elizabeth Line
- Close to good schools & places of worship

Accommodation

GROUND FLOOR

- Entrance Porch
- Entrance Hall
- Lounge : 14'2 x 11'8 (4.32m x 3.56m)
- Kitchen/Dining Room: 11'8 x 10'7 (3.56m x 3.23m)
- Sun Room: 9'3 x 8'2 (2.82m x 2.49m)

FIRST FLOOR

- Landing
- Bedroom 1: 10'9 x 10'9 (3.28m x 3.28m)
- Bedroom 2: 11'11 x 8'4 (3.63m x 2.54m)
- Bathroom

OUTSIDE

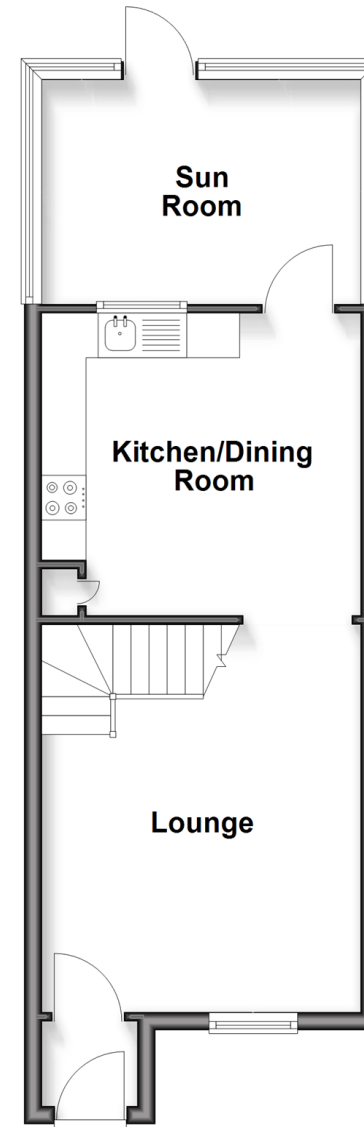
- Rear Garden
- Off Street Parking
- Garage

Call Chadwell Heath - 020 8597 0043 ■ douglasallen.co.uk

- A private rental licensing scheme applies to some properties in this area, please check with the Local Authority before proceeding
- Through a Homewise Home For Life Plan people aged 60+ can secure this property for up to 59% less, by purchasing a Lifetime Lease

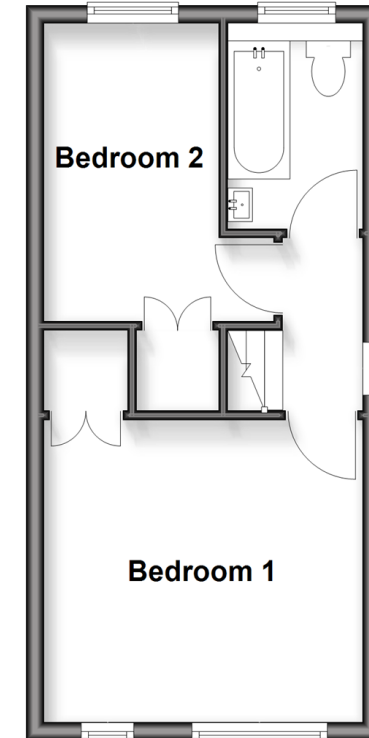
Ground Floor

Approx. 38.7 sq. metres (416.6 sq. feet)



First Floor

Approx. 28.2 sq. metres (303.2 sq. feet)



50714394/20260502/CN/MH