



Plot 1 Kneeton Grove

, East Bridgford, NG13 8NY

£769,995

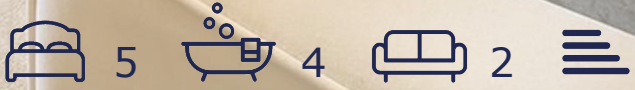
An exceptional five-bedroom detached family home, The Bardon is an impressive three-storey residence offering over 2,235 sq ft of beautifully designed accommodation, combining generous proportions, stylish open-plan living and versatile family space throughout. Built by Peveril Homes and ready for Summer 2026, Plot 1 presents a fantastic opportunity to secure a substantial brand-new home within the sought-after Kneeton Grove development in East Bridgford.

The ground floor has been thoughtfully designed for modern family life, centred around a stunning open-plan kitchen and dining room featuring an impressive central island and flowing seamlessly into a dedicated family area, creating an ideal space for both entertaining and everyday living. A separate utility room and guest WC add practicality, while the spacious dual-aspect lounge provides an elegant retreat, complete with French doors opening onto the rear garden.

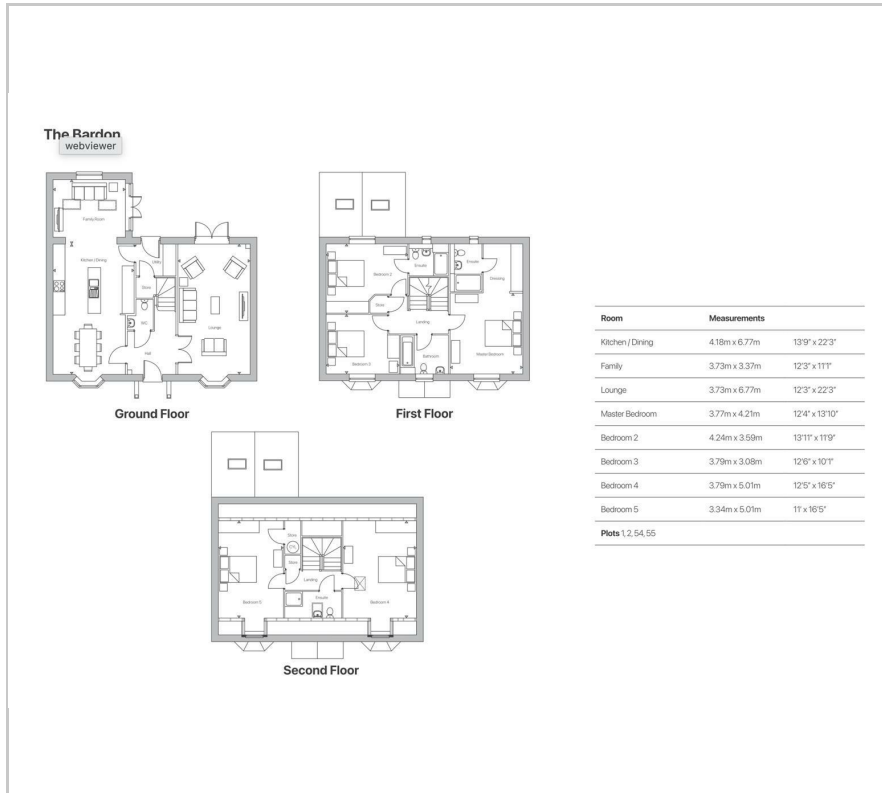
To the first floor, the generous principal bedroom enjoys its own dressing area and private ensuite, creating a luxurious main suite. A second double bedroom also benefits from its own ensuite, while a further double bedroom is served by the contemporary family bathroom.

Viewing

Please contact our Berkley Leicester Office on 0116 2544755 if you wish to arrange a viewing appointment for this property or require further information.



Floor Plan



Area Map



Energy Efficiency Graph



These particulars, whilst believed to be accurate are set out as a general outline only for guidance and do not constitute any part of an offer or contract. Intending purchasers should not rely on them as statements of representation of fact, but must satisfy themselves by inspection or otherwise as to their accuracy. No person in this firms employment has the authority to make or give any representation or warranty in respect of the property.