



MALLINSON  
& CO

INNOVATIVE PROPERTY EXPERTS



## Wheatcroft Gardens, Penistone, Sheffield, S36 6GA

Offers In Region Of £290,000

🛏 4 🚿 3 🚗 1

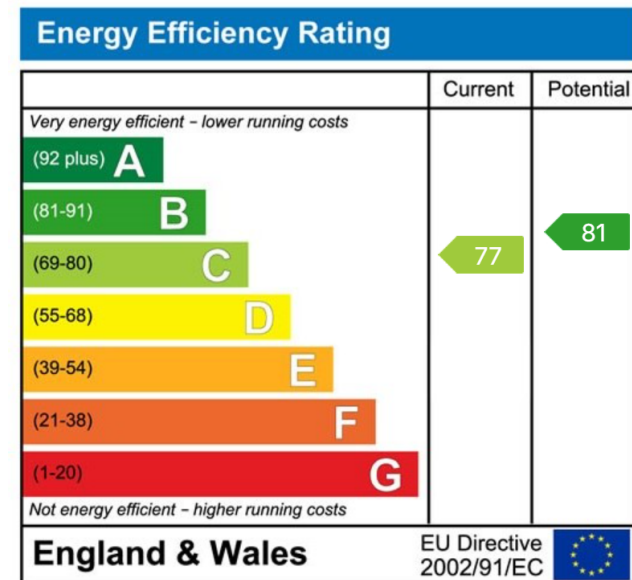
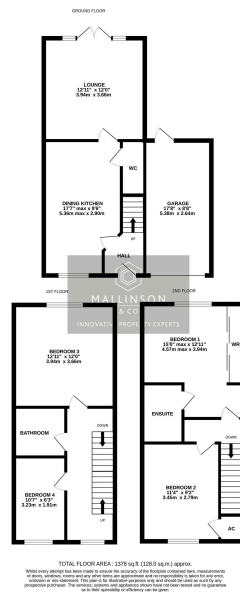


- SEMI DETACHED
- 4 BEDROOMS
- OPEN PLAN KITCHEN DINER
- 2 BATHROOMS & DOWNSTAIRS W.C.
- MODERN, CONTEMPORARY FITMENTS
- WELL PRESENTED THROUGHOUT
- GARDENS TO FRONT & REAR
- SINGLE GARAGE & DRIVEWAY
- EASY ACCESS TO TRANS PENNINE TRAIL
- CLOSE TO LOCAL AMENITIES, SCHOOLS & TRANSPORT LINKS





VIEW TODAY! ... SITUATED ON THE POPULAR WHEATCROFT GARDENS DEVELOPMENT IN PENISTONE, THIS WELL-PRESENTED FOUR-BEDROOM SEMI-DETACHED FAMILY HOME OFFERS SPACIOUS AND VERSATILE ACCOMMODATION ARRANGED OVER THREE FLOORS. THE PROPERTY BENEFITS FROM MODERN FITTINGS THROUGHOUT, OFF-STREET PARKING, A GARAGE AND A PRIVATE REAR GARDEN, MAKING IT IDEALLY SUITED TO THE GROWING FAMILY OR PROFESSIONAL COUPLE SEEKING CONVENIENT ACCESS TO LOCAL AMENITIES, SCHOOLING AND COMMUTER LINKS.



INNOVATIVE  
PROPERTY  
EXPERTS

**Mallinson & Co**

Office: 01226 414 150

Email: [ben@mallinsonandco.co.uk](mailto:ben@mallinsonandco.co.uk)

Web: [www.mallinsonandco.co.uk](http://www.mallinsonandco.co.uk)

Suite 6, Penistone 1, St. Mary's Street, Penistone, S36 6DT