

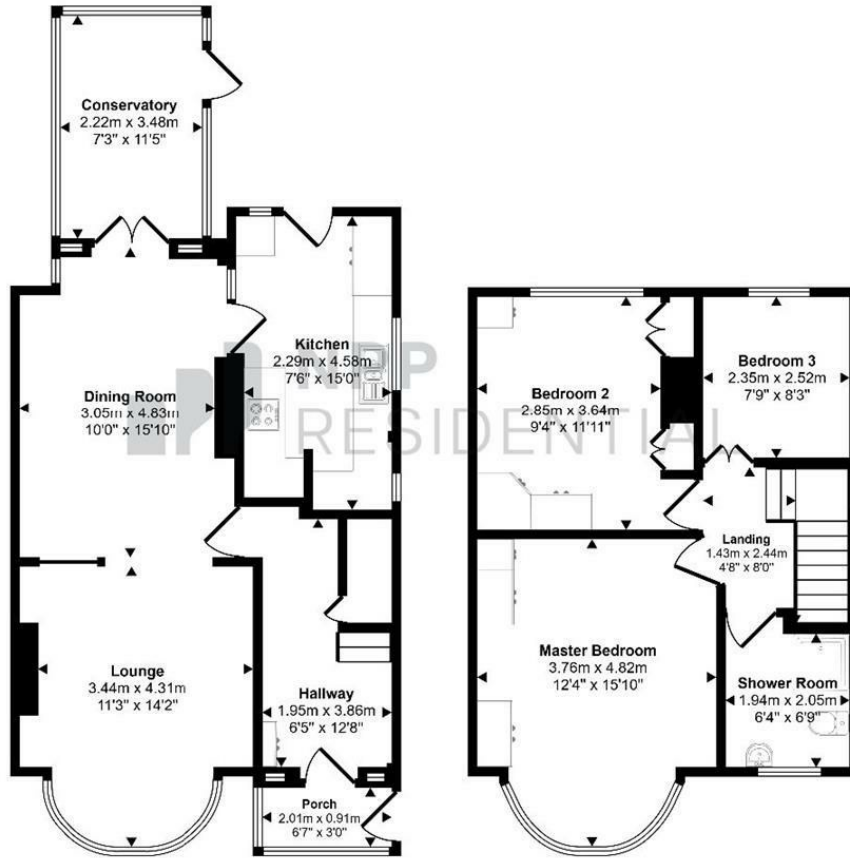


**3 Bed
House - Semi-
Detached
located
in Northenden
Offers Over £350,000**



 **NPP
RESIDENTIAL**

Approx Gross Internal Area
107 sq m / 1151 sq ft



Ground Floor
Approx 61 sq m / 660 sq ft

First Floor
Approx 46 sq m / 491 sq ft

This floorplan is only for illustrative purposes and is not to scale. Measurements of rooms, doors, windows, and any items are approximate and no responsibility is taken for any error, omission or mis-statement. Icons of items such as bathroom suites are representations only and may not look like the real items. Made with Made Snappy 360.

DIRECTIONS

CONTACT

22 Lloyd Street
Manchester
M2 5WA

E: info@nppresidential.co.uk
 T: 0161 639 0059
<https://nppresidential.co.uk/>

EPC Rating: C
Council Tax Band: C

