



**Connells**

Havelock Avenue  
Brooklands Milton Keynes



## Property Description

Nestled in the desirable Brooklands area of Milton Keynes, this delightful three bedroom semi-detached property offers a perfect blend of comfort and style. The heart of the home is the modern kitchen diner, ideal for family gatherings and entertaining guests. Upstairs you'll find three well sized bedrooms with the principal bedroom having the added benefit of an en-suite and built in wardrobes, and a family bathroom completes the first floor. Outside, the well maintained garden offers a serene space for relaxation and outdoor activities. With allocated parking for two vehicles, this combines convenience with a sought after location.

## Entrance/ Hallway

Door to front, radiator

## Cloakroom

Hand wash basin, low level wc, radiator

## Living Room

16' 2" x 11' 9" ( 4.93m x 3.58m )  
Double glazed window, radiator

## Kitchen/ Diner

14' 11" x 10' 5" ( 4.55m x 3.17m )  
Double glazed window, french doors to garden, storage cupboard, integrated dishwasher, fridge/freezer, washing machine, gas hob, oven and extractor.

## First Floor

### Landing

Double glazed window, storage cupboard, radiator

### Bedroom 1

11' 9" x 8' 8" ( 3.58m x 2.64m )  
Double glazed window, radiator, built in wardrobe.

### En-Suite

Double glazed window, wash hand basin, low level wc, shower, radiator.

### Bedroom 2

8' 5" x 8' 8" ( 2.57m x 2.64m )  
Double glazed window, built in wardrobe, radiator

### Bedroom 3

8' 8" x 6' 3" ( 2.64m x 1.91m )  
Double glazed window, radiator

### Bathroom

Double glazed window, low level wc, hand wash basin, bath with overhead shower, radiator.

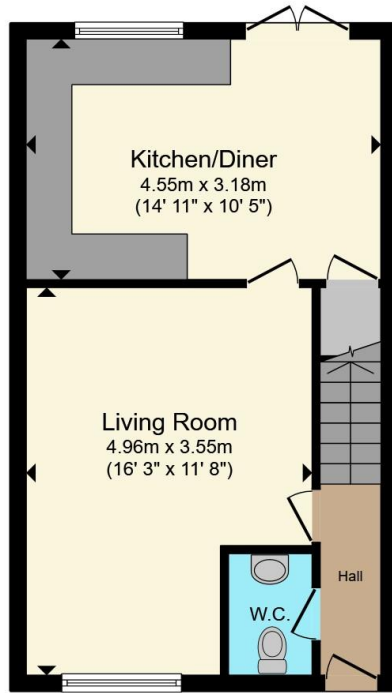
### Rear garden

Mostly laid to lawn, radiator, side gate access.

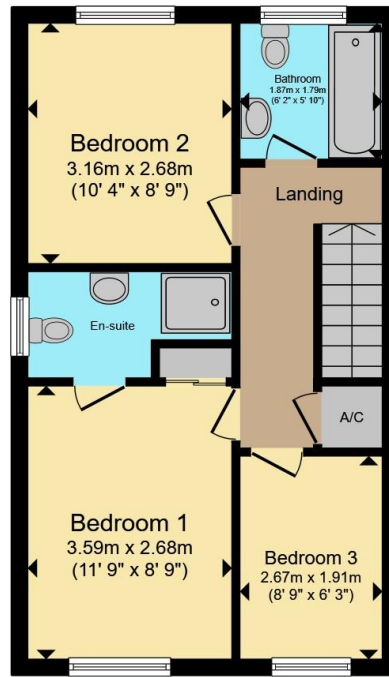
### Parking

Two allocated parking spaces





**Ground Floor**



**First Floor**

Total floor area 77.6 m<sup>2</sup> (835 sq.ft.) approx

This floor plan is for illustrative purposes only. It is not drawn to scale. Any measurements, floor areas (including any total floor area), openings and orientation are approximate. No details are guaranteed, they cannot be relied upon for any purpose and they do not form part of any agreement. No liability is taken for any error, omission or misstatement. A party must rely upon its own inspection(s). Powered by www.propertybox.io



To view this property please contact Connells on

**T 01908 691606**

**E [walnuttree@connells.co.uk](mailto:walnuttree@connells.co.uk)**

26A Fyfield Barrow The Walnut Tree Local Centre Walnut Tree

EPC Rating: B Council Tax Band: C

Tenure: Freehold

**view this property online [connells.co.uk/Property/WNT308213](http://connells.co.uk/Property/WNT308213)**



1. MONEY LAUNDERING REGULATIONS Intending purchasers will be asked to produce identification documentation at a later stage and we would ask for your co-operation in order that there will be no delay in agreeing the sale. 2. These particulars do not constitute part or all of an offer or contract. 3. The measurements indicated are supplied for guidance only and as such must be considered incorrect. Potential buyers are advised to recheck measurements before committing to any expense. 4. We have not tested any apparatus, equipment, fixtures, fittings or services and it is in the buyers interest to check the working condition of any appliances.

Connells Residential is registered in England and Wales under company number 1489613, Registered Office is Cumbria House, 16-20 Hockliffe Street, Leighton Buzzard, Bedfordshire, LU7 1GN. VAT Registration Number is 500 2481 05.

**See all our properties at [www.connells.co.uk](http://www.connells.co.uk) | [www.rightmove.co.uk](http://www.rightmove.co.uk) | [www.zoopla.co.uk](http://www.zoopla.co.uk)**

Property Ref: WNT308213 - 0005