



TOPSHAM ROAD, SW17

£950,000

- 3 Double Bedrooms
- 2 Family Bathrooms
- Open Plan Reception/Kitchen
- Private Driveway
- Large Decked Garden
- Home Office





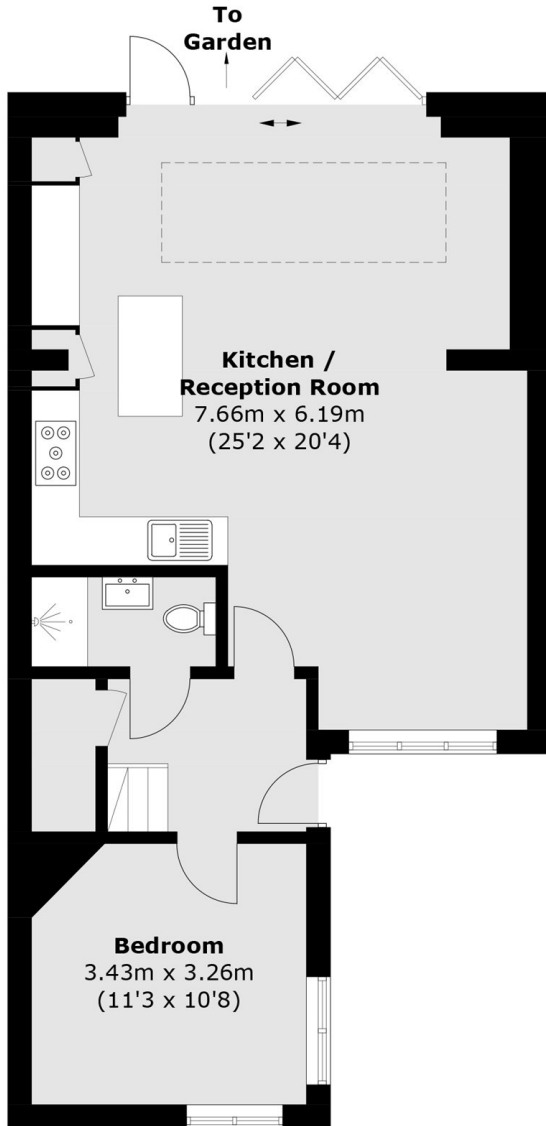
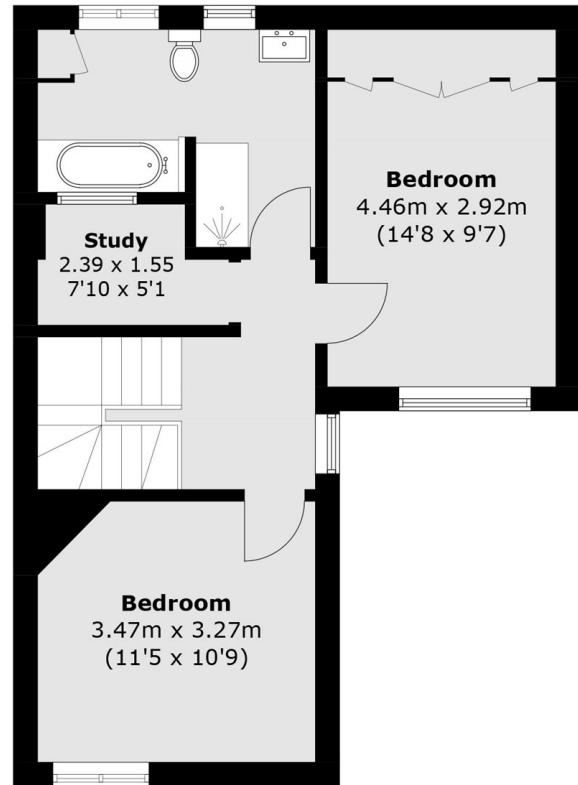
ABOUT THE HOME

A spacious family home, comprising of 2 floors, offering large living areas as well as access to off street parking in the form of a private driveway. Boasting 3 double bedrooms and 2 family sized bathrooms, this house covers an impressive 1,162 Sqft, the front facing bedroom makes the most of plantation shutters and easy access to the ground floor bathroom. Next to which is the expansive reception / kitchen space, an open plan and well designed area which features a floating island work space as well as ample room for dining. From here access to the large decked / tiled garden is very easy. The remaining 2 double bedrooms, rarely found home office and family bathroom are found on the first floor.

The flat is located on the sort after Topsham Road, located a short walk from Tooting Bec tube station, the northern line is easily accessible along with the vibrant culture associated with Tooting. The property also benefits from the safe nature of Topsham Road alongside the proximity to Tooting Common.





**Ground Floor****First Floor**

Total area (approx.): 108.0 sq. m (1,162.4 sq. ft)

JACKSONS TOOTING

3 Upper Tooting Road, London,
SW17 7TS
Sales: 020 8487 3175
Lettings: 020 8487 3176

Energy Rating: We aim to make our particulars both accurate and reliable. However they are not guaranteed; nor do they form part of an offer or contract. If you require clarification on any points then please contact us, especially if you're traveling some distance to view. Please note that appliances and heating systems have not been tested and therefore no warranties can be given as to their good working order.