



Matthew Parker Street, SW1H

£800,000

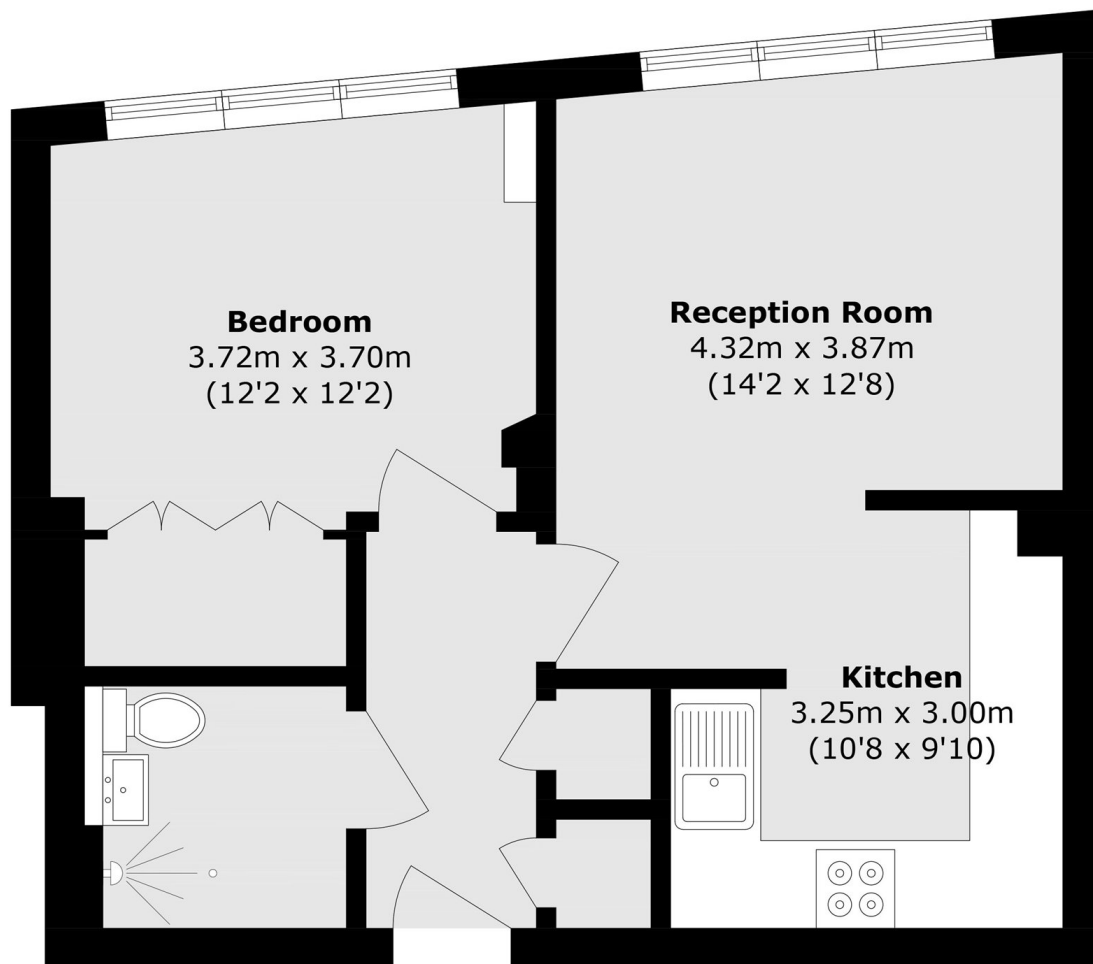
This wonderful one bedroom apartment has been recently refurbished to an impeccable high standard. The property is located in the heart of Westminster in the Berkeley group development offering 24-hour concierge, ample storage and a sleek separate kitchen for elevated living.

Matthew Parker Street enjoys a prime location close to St James's Park and Green Park with nearby transport links.

Features

- One Bedroom
- Separate Kitchen
- Concierge
- Recently Renovated
- St. James's Park
- Lateral Flat

Matthew Parker Street, London, SW1H



Ground Floor

Total area (approx.): 48.4 sq. m (520.9 sq. ft)