

JAMES NEAVE
THE ESTATE AGENTS

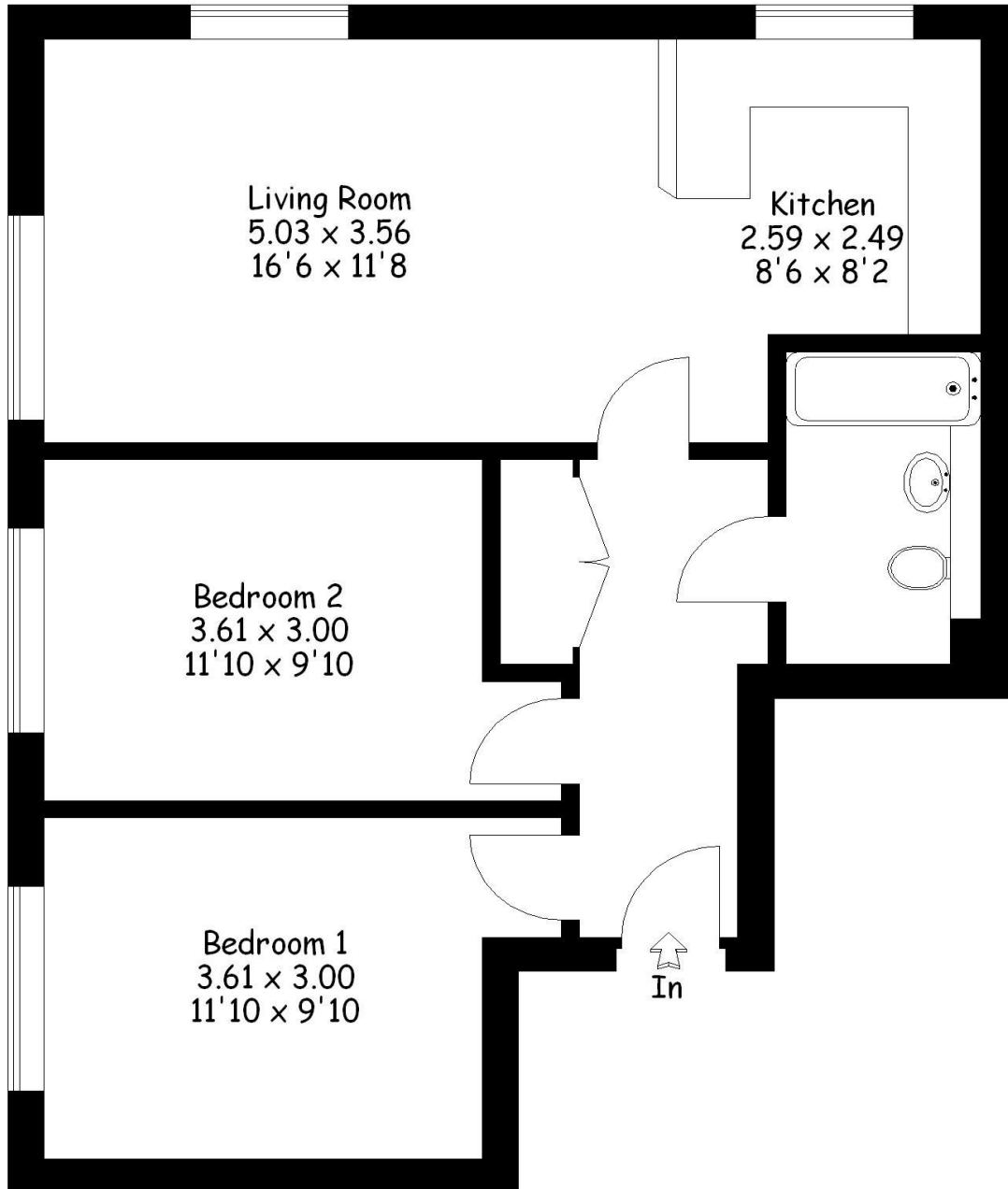


5 Bridge Court, Bridge Street, Walton-on-Thames, Surrey, KT12 1AG

£1550pcm + Initial deposit



Approximate Gross External Area :- 74 sq m / 797 sq ft



First Floor

Illustration For Identification Purposes Only. Not To Scale
Job Ref. 37513

A modern two double bedroom apartment set within an exclusive gated development, ideally located between Walton High Street and the picturesque River Thames. This attractive home offers a bright and spacious open plan living room and kitchen, with the kitchen featuring fitted appliances, granite work surfaces, and a breakfast bar. The property also benefits from a beautifully presented family bathroom complete with a shower over the bath. Having recently undergone redecoration, the apartment further benefits from new carpets in both bedrooms. Additional features include gas central heating, double glazing, a secure entry phone system, well-maintained communal gardens, and gated residents' parking. Available now on an unfurnished basis. EPC Rating C.



AGENTS NOTES: These details do not constitute any part of an offer or contract. In issuing them we do not have any authority to give any warranty or representation whatsoever in respect of this property. These details are provided without any responsibility on our part or the part of the vendors. No statements in these details are to be relied upon as representations of fact and purchasers should satisfy themselves by inspection or otherwise as to the accuracy of the statements contained therein.

Equipment: We have not tested the equipment or central heating system mentioned in these particulars and purchasers are advised to satisfy themselves as to their working order and condition.

Measurements: Great care is taken when measuring but measurements should not be relied upon for ordering carpets, equipment, etc.