



OAKFIELD

Greville Road, Hastings  
£1,350 Per Calendar Month





# SUMMARY

---

Nestled on the sought-after Greville Road in Hastings, this three-bedroom semi-detached house, the property is presented in excellent decorative order, making it ready to move in.

Conveniently located, the property is within easy reach of Ore Village amenities, local schools, Conquest Hospital, and excellent road links via The Ridge.

On the ground floor, an inviting entrance hall leads into a spacious main reception room with a feature fireplace, adding warmth and character. There is a modern fitted kitchen/diner at the rear with lovely views over the garden.

Upstairs, there are three well-proportioned bedrooms, offering ample space, alongside a contemporary bathroom with WC.

The rear garden is a standout feature, enjoying natural sunlight throughout the day. It includes a patio area and a raised lawn.

Please note:

An annual household income of £40,500 will be required for the affordability criteria of this property.

The minimum tenancy length is 6 Months.

Available Now.









### Living Room

12'7" x 9'9"

### Dining Room

15'1" x 9'9"

### Kitchen

6'11" x 5'10"

### Bedroom One

11'9" x 8'5"

### Bedroom Two

10'10" x 7'11"

### Bedroom Three

7'4" x 6'0"

### Bathroom

5'9" x 4'11"

Council Tax Band B - £1987 Per Annum























# INFORMATION

---

## Local Authority

Hastings Borough Council

## Council Tax Band

**B**

## Opening Hours

Monday to Friday	9.00am - 5.30pm
Saturday	9.00am - 4.00pm

## Viewings

Please contact us on 01424 446644 if you wish to arrange a viewing appointment for this property or require further information.

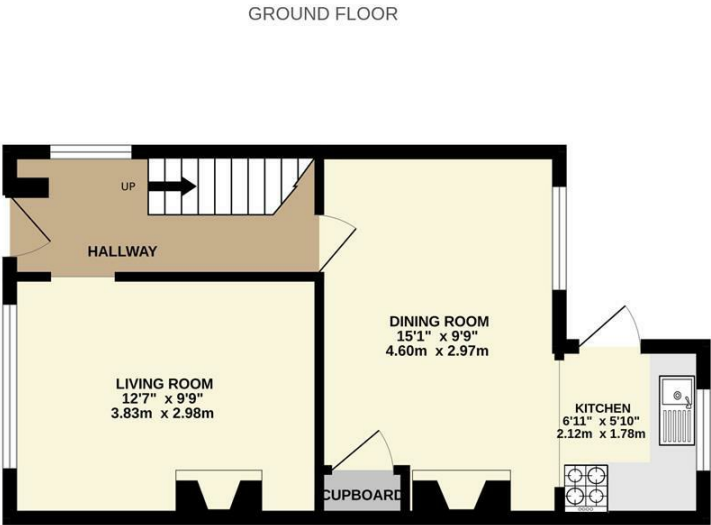
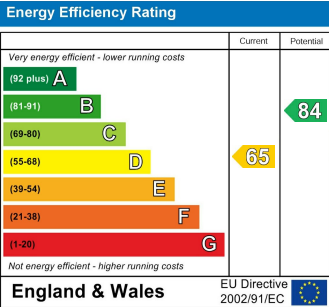
## Area Map





Floorplan

Energy Efficiency Graph



Whilst every attempt has been made to ensure the accuracy of the floorplan contained here, measurements of doors, windows, rooms and any other items are approximate and no responsibility is taken for any error, omission or mis-statement. This plan is for illustrative purposes only and should be used as such by any prospective purchaser. The services, systems and appliances shown have not been tested and no guarantee as to their operability or efficiency can be given.  
Made with Metropix ©2026

These particulars, whilst believed to be accurate are set out as a general outline only for guidance and do not constitute any part of an offer or contract. Intending purchasers should not rely on them as statements of representation of fact, but must satisfy themselves by inspection or otherwise as to their accuracy. No person in this firms employment has the authority to make or give any representation or warranty in respect of the property.