



The Voles Retreat
Woolstone Road | Uffington | Faringdon | Oxfordshire | SN7 7RG

STEP INSIDE

A Contemporary Architect-Designed Home with Iconic Countryside Views

Set within the heart of the Oxfordshire countryside in Uffington, The Vole Retreat is a striking new-build residence designed by an award-winning architectural practice. Thoughtfully positioned to embrace its surroundings, the home enjoys far-reaching views across open fields towards the iconic Uffington White Horse, creating a rare sense of place and permanence.

A Modern Home Rooted in Its Landscape

Designed with a refined contemporary aesthetic, the house balances clean architectural lines with a warm, understated material palette. Expansive glazing draws in natural light throughout the day, framing uninterrupted countryside views and creating a constant connection between interior spaces and the surrounding landscape.

Every element has been carefully considered to enhance both comfort and lifestyle, resulting in a home that feels calm, private, and effortlessly elegant.

Lifestyle Living at Its Core

At the heart of the home is a beautifully proportioned open-plan living space, designed for both relaxed daily living and refined entertaining. Kitchen, dining, and sitting areas flow seamlessly, offering flexibility while maintaining a sense of intimacy and warmth.

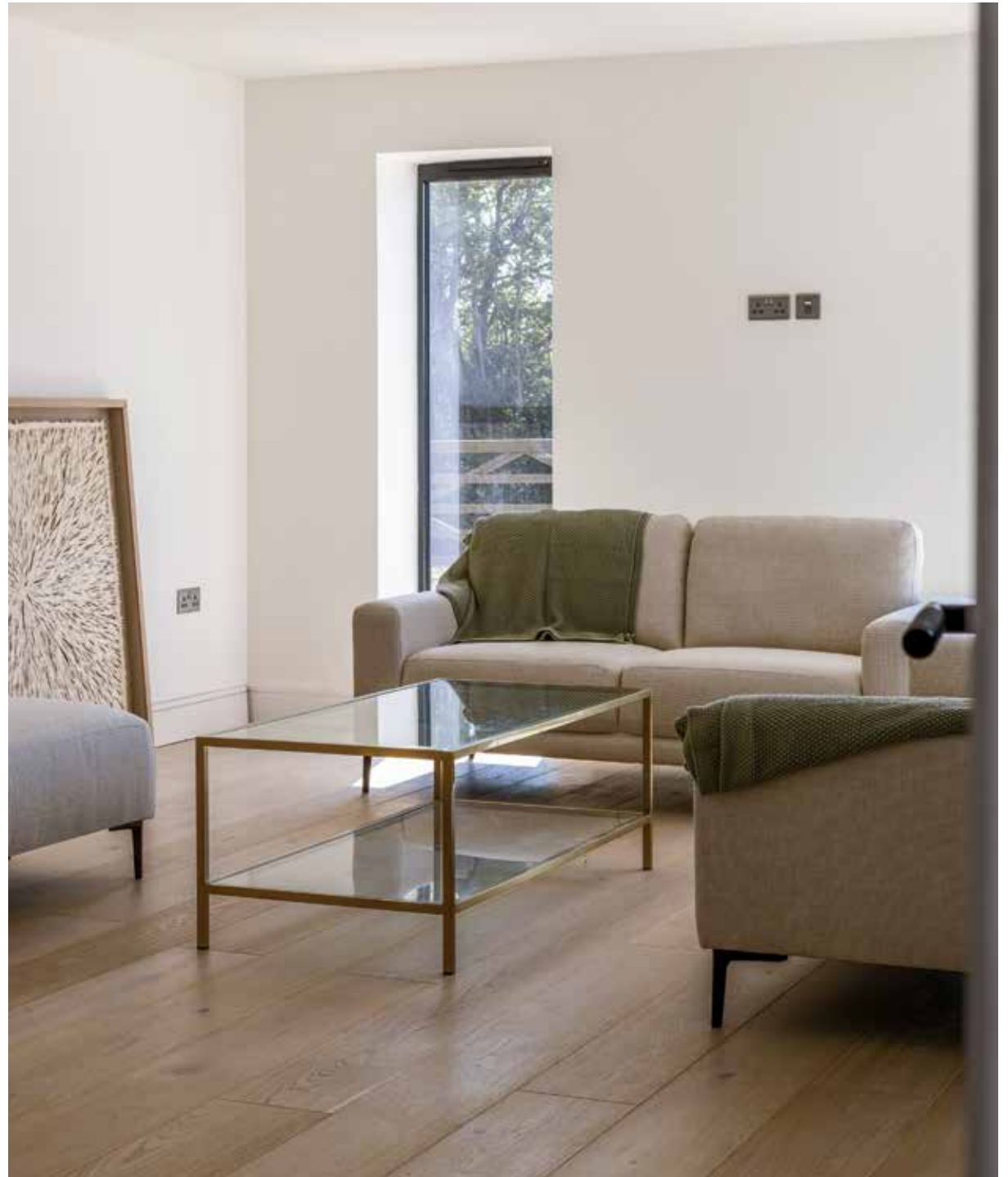
This is a home designed around modern living—easy to enjoy, simple to maintain, and perfectly suited to both quiet moments and social gatherings.

Bedrooms & Private Spaces

The private accommodation continues the theme of calm sophistication. Well-appointed bedrooms provide peaceful retreats, complemented by stylish bathrooms finished with a focus on quality and simplicity. The layout is both practical and considered, offering comfort for residents and guests alike.

Energy Efficiency & Sustainable Design

Built to an exceptionally high standard, The Vole Retreat achieves a strong energy efficiency rating, reflecting a commitment to both sustainability and long-term performance. High-quality construction methods and carefully selected materials ensure the home is not only visually refined, but also economical and efficient to run throughout the year.









SELLER INSIGHT

“ From the beginning, the intention was to create a home that felt calm, modern, and closely connected to its countryside setting, while still delivering a high standard of design and construction throughout.

Sustainability was a guiding principle rather than an afterthought. A strong personal commitment to the environment and quality shaped many of the decisions, from the overall efficiency of the building to the selection of materials and finishes. The focus was always on creating something responsible, long-lasting, and genuinely efficient to live in.

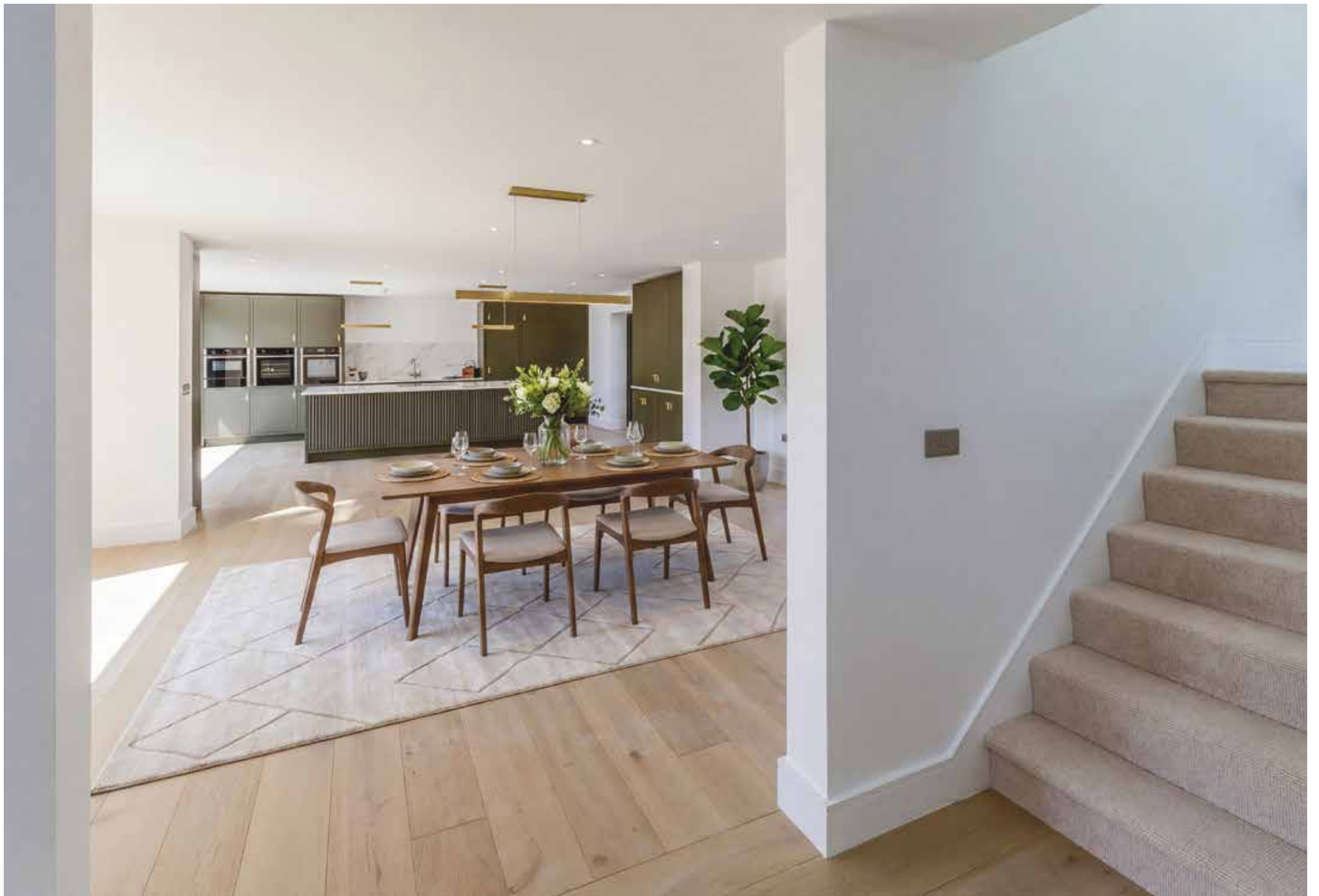
There was a preference for simplicity and restraint in the design approach—allowing space, light, and quality materials to define the character of the home. Nothing was included unnecessarily; instead, every element was considered for both its function and its longevity.

The result is a home that feels easy and comfortable in daily use, with a quiet sense of refinement throughout. It performs well in all seasons, is economical to run, and sits naturally within its surroundings.

Ultimately, it reflects a belief that a truly well-designed home should balance beauty, practicality, and responsibility—creating a place that will remain enjoyable and relevant for many years to come.

* These comments are the personal views of the current owner and are included as an insight into life at the property. They have not been independently verified, should not be relied on without verification and do not necessarily reflect the views of the agent.









STEP OUTSIDE

A Remarkable Setting

The setting is one of the home's most compelling features. Positioned within open countryside, the property enjoys a sense of seclusion while remaining part of the well-regarded village of Uffington. The landscape is ever-present, with wide skies, seasonal changes, and uninterrupted views forming part of daily life.

The iconic White Horse provides a truly unique backdrop—an enduring symbol of the area and a constant visual connection to the history and character of the landscape.

Summary

The Vole Retreat is a rare opportunity to acquire a newly built, architect-designed home in one of Oxfordshire's most distinctive rural settings. Combining contemporary design, exceptional energy efficiency, and an extraordinary outlook, it offers a lifestyle defined by calm, quality, and connection to the countryside.

A home for those seeking modern luxury in a truly timeless landscape.

Property Information

Tenure: Freehold

Council Tax band: G

Local Authority: Vale of White horse

EPC: A

Property construction : Block & render walls and slate roof

Electricity supply: Mains also the house has solar panels

Water supply: Mains

Drainage & Sewerage: Sewage treatment plant

Heating: Electric via air source heat pump and water

Broadband: FTTC / Standard Fibre Broadband connection available

Full fibre broadband

Mobile signal/coverage: 4G mobile signal is available in the area - we advise you to check with your provider.

Parking: Drive way for 4 cars

Total Internal Floor Area: 285sqm



Voles Retreat - Uffington

Approximate Gross Internal Area = 285.2 sq m / 3070 sq ft
(Excluding Void)



Illustration is for identification purposes only. Measurements and property layout are approximate.



AZIZ ALI

Partner Agent

E: Aziz.Ali@fineandcountry.com

T: 44 (0)7377 967 249

"Hi, my name is Aziz and I have the pleasure of being a Fine & Country Partner Agent for the beautiful Cotswolds and Cirencester area.

With my professional career always having had customer centricity at the heart of it, I strive to provide my clients with a seamless customer journey that is truly personalised. By taking the time to understand what my clients are looking for, maintaining clear and open communication, and being a single point of contact, I ensure that whether they are selling or buying a home, it is a smooth and stress-free process.

Over the last few years, I have had the pleasure of calling the Cotswolds my home and love discovering this wonderful part of the country. When not indulging in everything property, my hobbies include working on my classic Mini, playing and listening to music, and country walks with my family go without saying!

So, if you are looking to buy or sell your home, feel free to get in touch for a non-obligatory discussion on how I can help you the Fine & Country way!"

Follow Fine & Country on



Fine & Country Cotswolds and Cirencester
2 A P Ellis Rd, Upper Rissington, Cheltenham, GL54 2QB
01608 619919 | cotswolds@fineandcountry.com

